



FINE & COUNTRY

5 Bedrooms

House - Detached

Located in Somerset

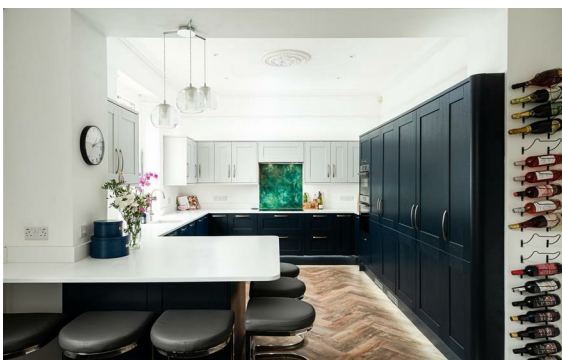
OIEO £1,000,000



Fine & Country Wells and Chew Valley

www.fineandcountry.com

01749 608333



An attractive detached Victorian house with surrounding gardens and a separate stone outbuilding with potential for use as further accommodation, situated in a quiet cul-de-sac in the popular village of Cheddar, with all amenities close at hand. Planning permission has been granted for a separate new two bedroom house in the grounds (see below for details).

The well-presented accommodation comprises on the ground floor; reception hallway, kitchen/family room, sitting room which is open plan to the dining room, study/ bedroom 6, WC, utility room and boot room/lobby area, whilst upstairs are 5 double bedrooms; two with en suite facilities, and family bathroom. The owners have lovingly restored and updated the property with attention to detail including a newly fitted contemporary kitchen whilst retaining many old features such as the ceiling cornices and roses, flagstone flooring and beautiful marble fireplaces in the main reception rooms. The typical high ceilings and big sash windows of the period combine with the décor in soft neutral shades, creating a bright, warm and stylish family home. There are pleasant views from all aspects and from the back of the house the windows overlook the school field and allotments.

Energy Efficiency Rating: D

Agents Note: Whilst every care has been taken to prepare these particulars, they are for guidance purposes only. All measurements are approximate and are for general guidance purposes only and whilst every care has been taken to ensure their accuracy, they should not be relied upon and potential buyers/tenants are advised to recheck the measurements.

FINE & COUNTRY

Fine & Country Wells and Chew Valley

Melbourne House

36 Chamberlain Street

Wells BA5 2PJ

Wells: 01749 608333

wells@fineandcountry.com

Chew Valley: 01761 252502

chew.valley@fineandcountry.com

www.fineandcountry.com