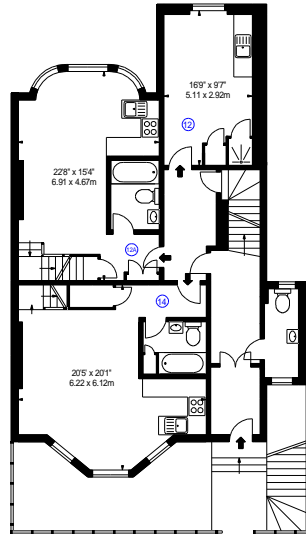
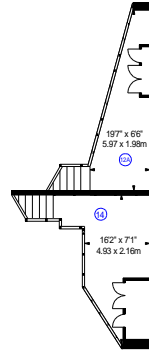


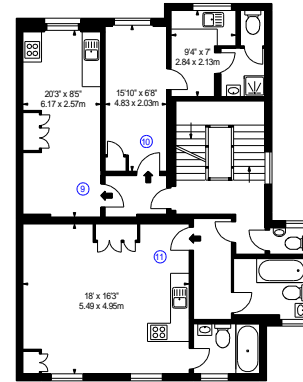
LOWER GROUND FLOOR



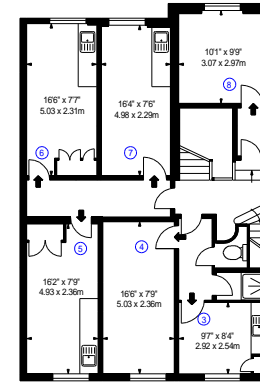
GROUND FLOOR



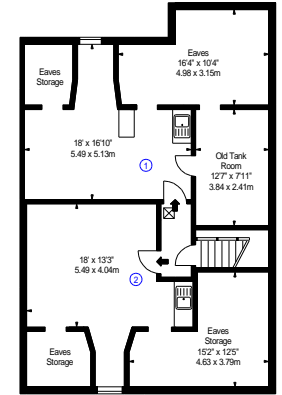
MEZZANINE



FIRST FLOOR



SECOND FLOOR



THIRD FLOOR

APPROX. GROSS INTERNAL AREA *
5931 Ft² - 550.99 M²
(Including Vaults & Eaves)

<p>Property Details:</p> <p>12 ROLAND GARDENS LONDON SW7 3PH</p>		<p>Surveyed and Drawn By:</p> <p>BKR</p> <p>Hideaway Work Space 1 Empire Mews London SW16 2BF</p>
<p>SCALE - 1:250 @ A4</p>		<p>Tel: 0345 257 2023 info@bkrffloorplans.co.uk www.bkrffloorplans.co.uk</p>
<p>REFERENCE NUMBER :105723</p>		<p>© BKR 2024</p>
<p>Plans Drawn: 22.03.2024</p>		