



## A Mews of 5 Medieval Grade II Listed Properties

152 THE HILL • HIGH STREET • BURFORD • OX18 4QU



152 The Hill is a Grade II Listed property that has been completely renovated and now offers 5 individual holiday homes located in the lovely town of Burford which occupies a position on the meandering River Windrush. Burford is built on a fairly steep hill, and the view from the top of the hill looking down the High Street to the river is one of the classic panoramas of the Cotswolds.

A lovely 4-arched medieval bridge, widened in the 18th century, crosses the Windrush, and though Burford itself does not occupy the northern bank, a walk across the bridge is rewarded by wonderful views across watermeadows to the spire of St. John the Baptist parish church.

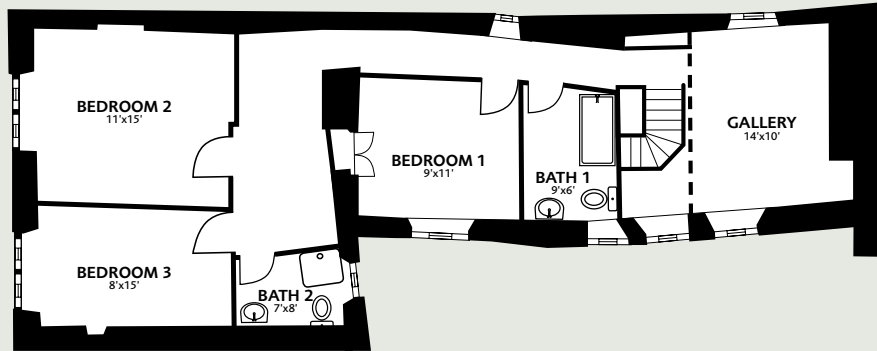
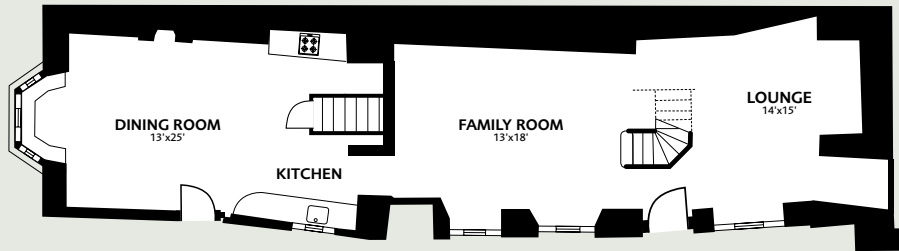
The 5 Properties consist of one 3/4 bedrooms, three 2 bedrooms and one 1 bedroom with a large garden to the rear.

Witney 8 miles / Charlbury (Mainline Station for London-Paddington from 85 minutes) 9 miles / Cirencester 17.5 miles / Oxford 20 miles / Cheltenham 22 miles

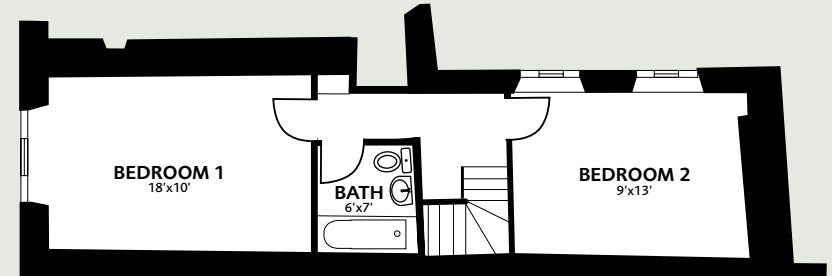
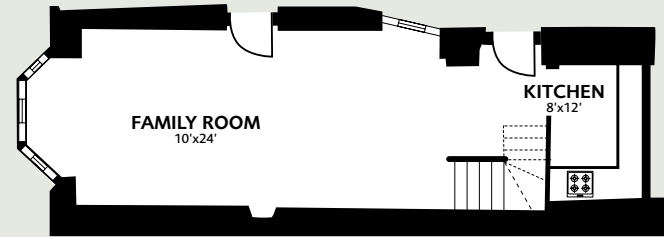
(All distances and times are approximate)



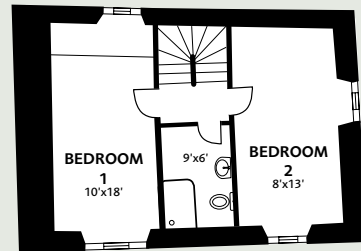
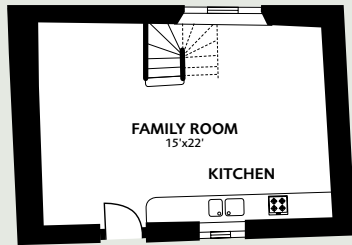
## The Hall



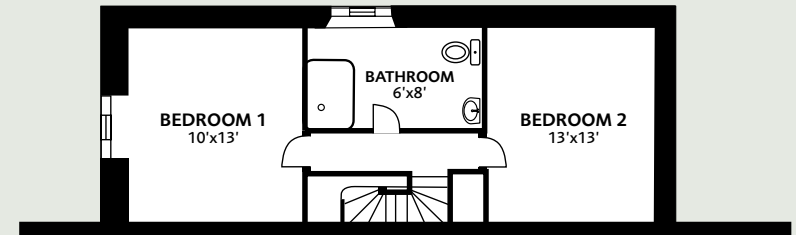
## The Lodge



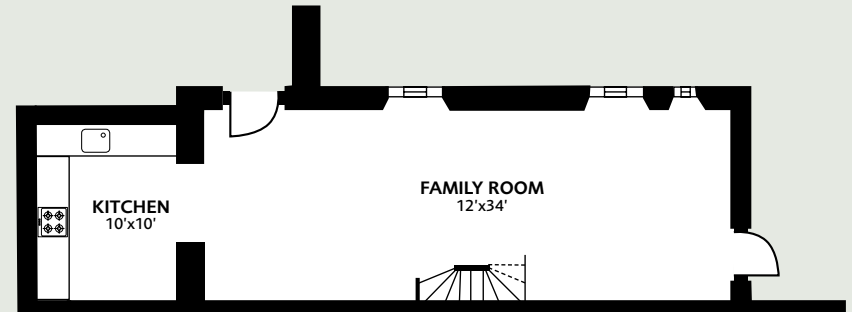
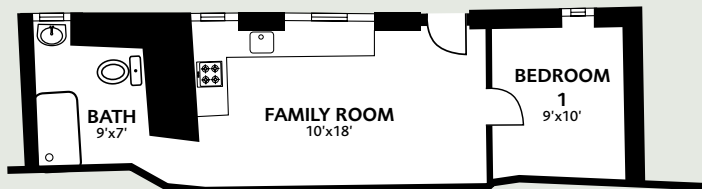
## The Cottage



## The Barn



## The Snug







**IMPORTANT NOTICE:**

Savills, their clients and any joint agents give notice that: 1. They are not authorised to make or give any representations or warranties in relation to the property either here or elsewhere, either on their own behalf or on behalf of their client or otherwise. They assume no responsibility for any statement that may be made in these particulars. These particulars do not form part of any offer or contract and must not be relied upon as statements or representations of fact. 2. Any areas, measurements or distances are approximate. The text, photographs and plans are for guidance only and are not necessarily comprehensive. It should not be assumed that the property has all necessary planning, building regulation or other consents and Savills have not tested any services, equipment or facilities. Purchasers must satisfy themselves by inspection or otherwise.



Savills Stow-on-the-Wold  
Cotswold House,  
Church Street  
Stow-on-the-Wold  
Gloucestershire GL54 1BB  
+44(0)1451 832 832  
stow@savills.com

Date Code 20180228RL  
Date Photographs Taken:  
15/02/2018