

HALLAM  
FOUR  
BEDROOM  
HOME

BLOOR HOMES



A four bedroom detached home featuring a spacious lounge, open plan kitchen / dining / family area with French doors to the rear garden. A utility cupboard and cloakroom complete this floor. Upstairs is home to four bedrooms, two of which are double and the master bedroom boasting fitted wardrobes and an en suite shower room.

HALLAM

A SPACIOUS FOUR  
BEDROOM FAMILY HOME

HALLAM  
FOUR  
BEDROOM  
HOME

FIRST FLOOR:

**BEDROOM 1**  
2.58m x 3.15m  
8'5" x 10'4"

EN SUITE

**BEDROOM 2**  
3.57m x 2.45m  
11'8" x 8'0"

**BEDROOM 3**  
2.03m x 3.15m  
6'8" x 10'4"

**BEDROOM 4**  
2.56m x 2.28m  
8'5" x 7'6"

BATHROOM

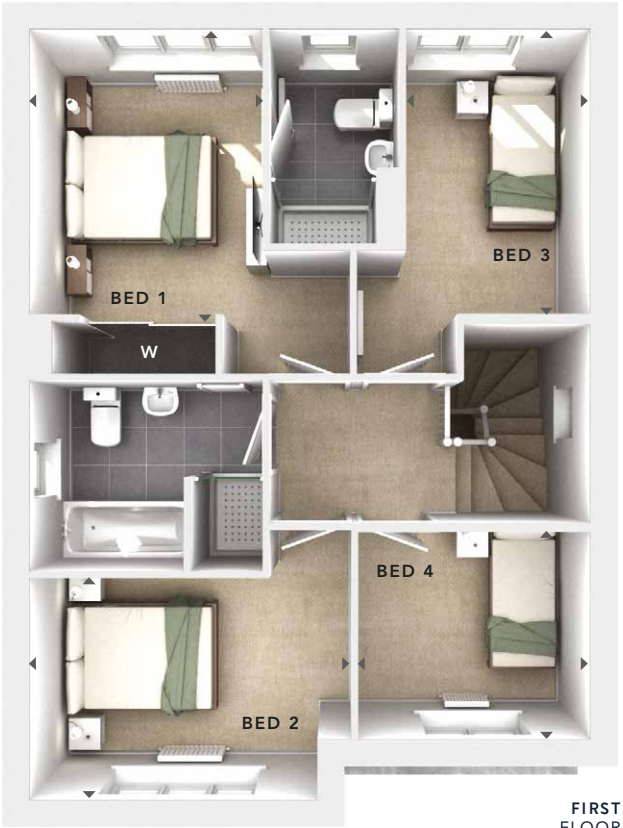
GROUND FLOOR:

**LOUNGE**  
3.35m x 4.64m  
11'0" x 15'3"

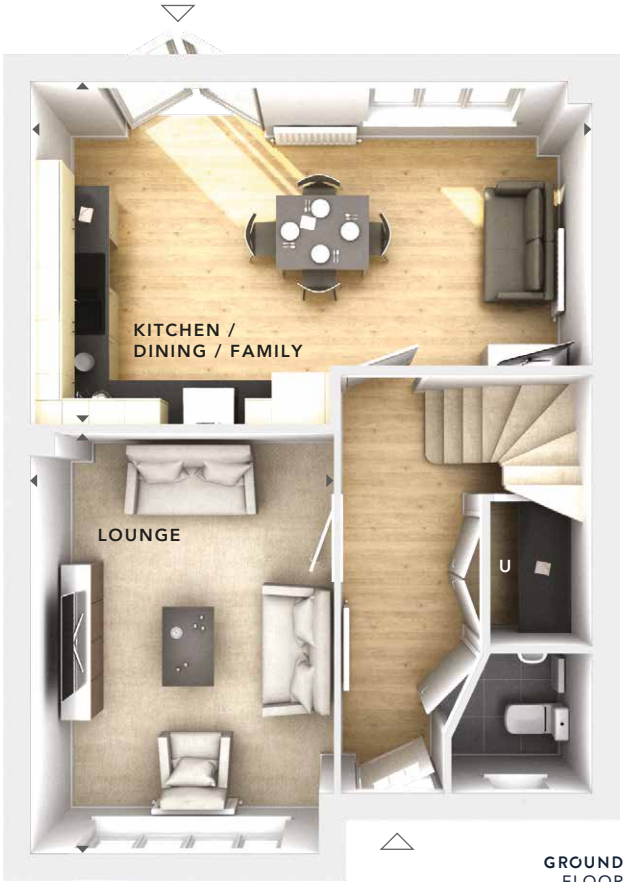
**KITCHEN /  
DINING / FAMILY**  
6.20m x 3.76m  
20'4" x 12'4"

UTILITY CUPBOARD

CLOAKS



FIRST  
FLOOR



GROUND  
FLOOR

W	- Fitted Wardrobes
U	- Utility Cupboard
△	- External Access
◀ ▶	- Measurement Points
470 BRICK 4.8	



These particulars are intended as a preliminary guide for prospective purchasers and should not be relied upon. The elevational treatment for individual house types shows a typical arrangement. Details of materials and design treatments may vary. Any artist impressions shown are not intended to represent any particular plot. Purchasers are advised to inspect the layout plan to establish the arrangement of the house and surrounding property. Internal layouts show a general arrangement which may vary from plot to plot. Room sizes given are approx. overall finished room sizes and subject to normal building tolerances (ie ± 75mm). In all instances purchasers are advised to inspect plot specific information available from our sales team. Nothing in these particulars or verbal assurance shall form or constitute part of any contract, and are given without any responsibility on behalf of Bloor Homes.