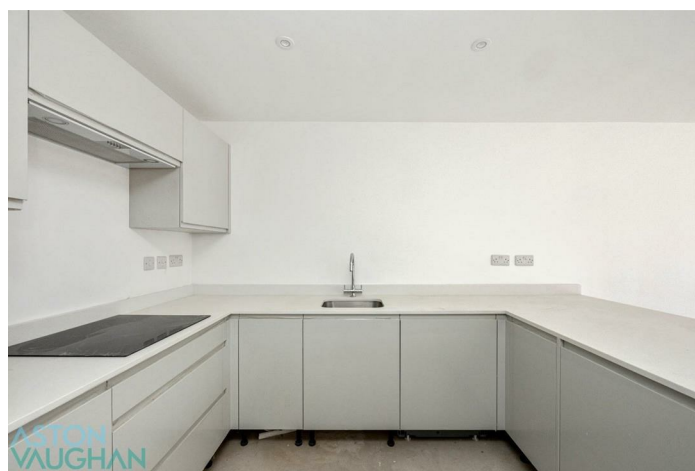
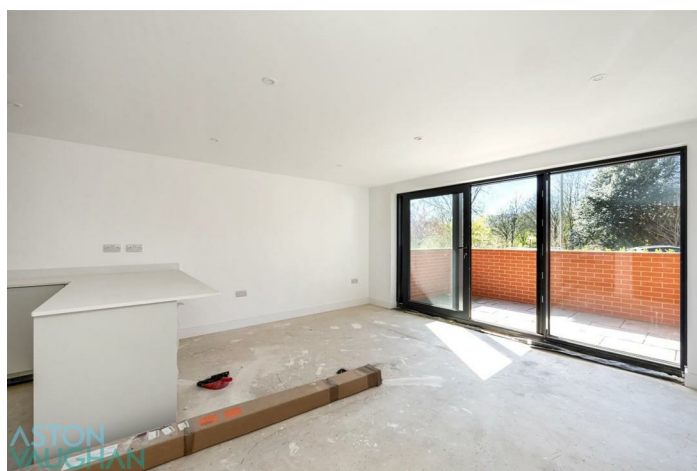


FREEHOLD



Apartment (EPC Rating:)

**GFF X 4, 35 GOLDSTONE CRESCENT,
HOVE, BN3 6LR**

£2,200,000

**ASTON
VAUGHAN**
Sales and Lettings



8 Bedroom Apartment located in Hove

Unique Investment Opportunity

Selection of 4 x GF apartments in

Newly built 2- bedroom, 2-bathroom

Ground floor Apartments opposite Hove Park

10-year New Build Guarantee

Share of Freehold

Communal garden and private west facing garden
terraces

Parking by separate negotiation

Immaculate, contemporary interior with opportunity
for new owners to choose final touches

Waitrose and Tesco Express within 5-minute walk

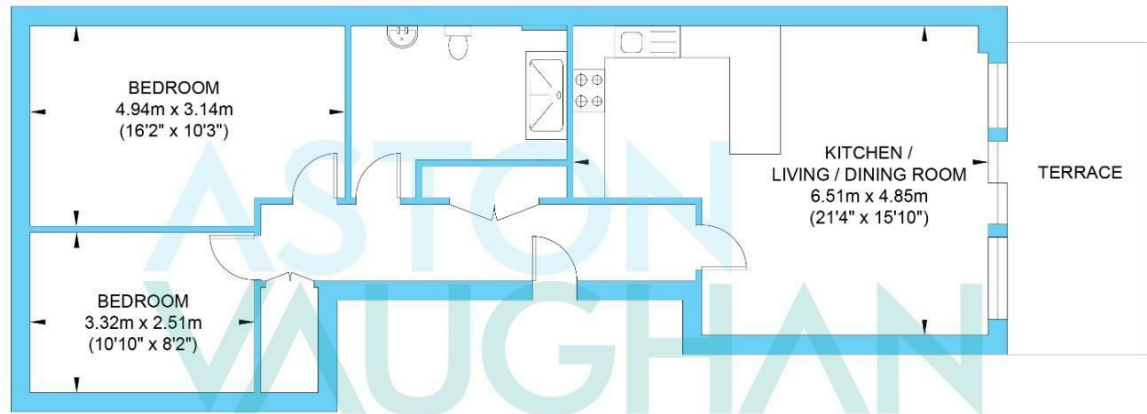
Hove Park with tennis courts, café, play area and mini
railway on your doorstep

Hove Station 5 mins away

Excellent school catchment and transport links by
road, bus or train nearby.



Goldstone Crescent



Ground Floor
Approximate Floor Area
773.38 sq ft
(71.85 sq m)

Approximate Gross Internal Area = 71.85 sq m / 773.38 sq ft

Illustration for identification purposes only, measurements are approximate, not to scale.

Council Tax Band

Call us on

01273 253000

info@astonvaughan.co.uk

www.astonvaughan.co.uk

Energy Performance Graph

Energy Efficiency Rating		
	Current	Potential
Very energy efficient - lower running costs		
(92 plus) A		
(81-91) B		
(69-80) C		
(55-68) D		
(39-54) E		
(21-38) F		
(1-20) G		
Not energy efficient - higher running costs		
England & Wales		
EU Directive 2002/91/EC		

Agents Note: Whilst every care has been taken to prepare these particulars, they are for guidance purposes only. All measurements are approximate and are for general guidance purposes only and whilst every care has been taken to ensure their accuracy, they should not be relied upon and potential buyers are advised to recheck the measurements.