



Inwood Crescent, BN1

£425,000

ASTON
VAUGHAN

Sales and Lettings

INTRODUCING

Inwood Crescent, BN1

2 Bedrooms | 1 Bathroom | 1 Reception Room | 974 sq ft |

Beautifully presented and deceptively spacious, this two-bedroom upper floor maisonette offers versatile living space for small families and professionals alike. Formed from the first and second floors of a Victorian terraced house, it bears many original period features and boasts incredible views over the city to the South Downs from its hillside position. It also benefits from sole access to a sweet walled garden facing west, so it receives plenty of afternoon sunshine and has space for dining alfresco, becoming a wonderful extension of the home during summer.

At the end of the landing, the living room is particularly spacious with ample room for formal dining and relaxation on relaxed furnishings to cosy up on in winter by the open period fireplace. It is naturally light with three tall sash windows framing views over the local landscape which only improve the further up the house you go.

Passing the immaculate bathroom with a shower over a full bath suite, the kitchen sits to the rear of the building with

direct access to the garden. It is a well-appointed space with plenty of storage and space for a freestanding fridge, cooker, dishwasher and washing machine, which may be available by separate negotiation. You could also allow a small kitchen table and chairs for informal dining occasions.

Outside, the garden is perfectly low maintenance with a decked walkway leading to a dining area below the boughs of a gracious eucalyptus tree. The original brick walls have been retained, and the westerly aspect ensures it is a lovely place to sit outside in the last of the summer sunshine.

Returning inside, stairs rise to the second floor where there are two charming double bedrooms. The principal room is larger with a wall of built-in wardrobes and exceptional views across the rooflines and treetops of the city to the east towards the rolling hills of the South Downs. These views are ever-changing with the seasons and are a joy to wake up to each day.





Inwood Crescent

Vendor's Comments:

'This has been a wonderful home for me as I have really enjoyed making the space my own. The rooms are so light and spacious and the views were always a joy to look out to while working. The location is amazing for commuters and there is plenty to enjoy within easy walking distance as The Dyke pub is at the top of the road and Seven Dials is just 10-minutes away.'

Education:

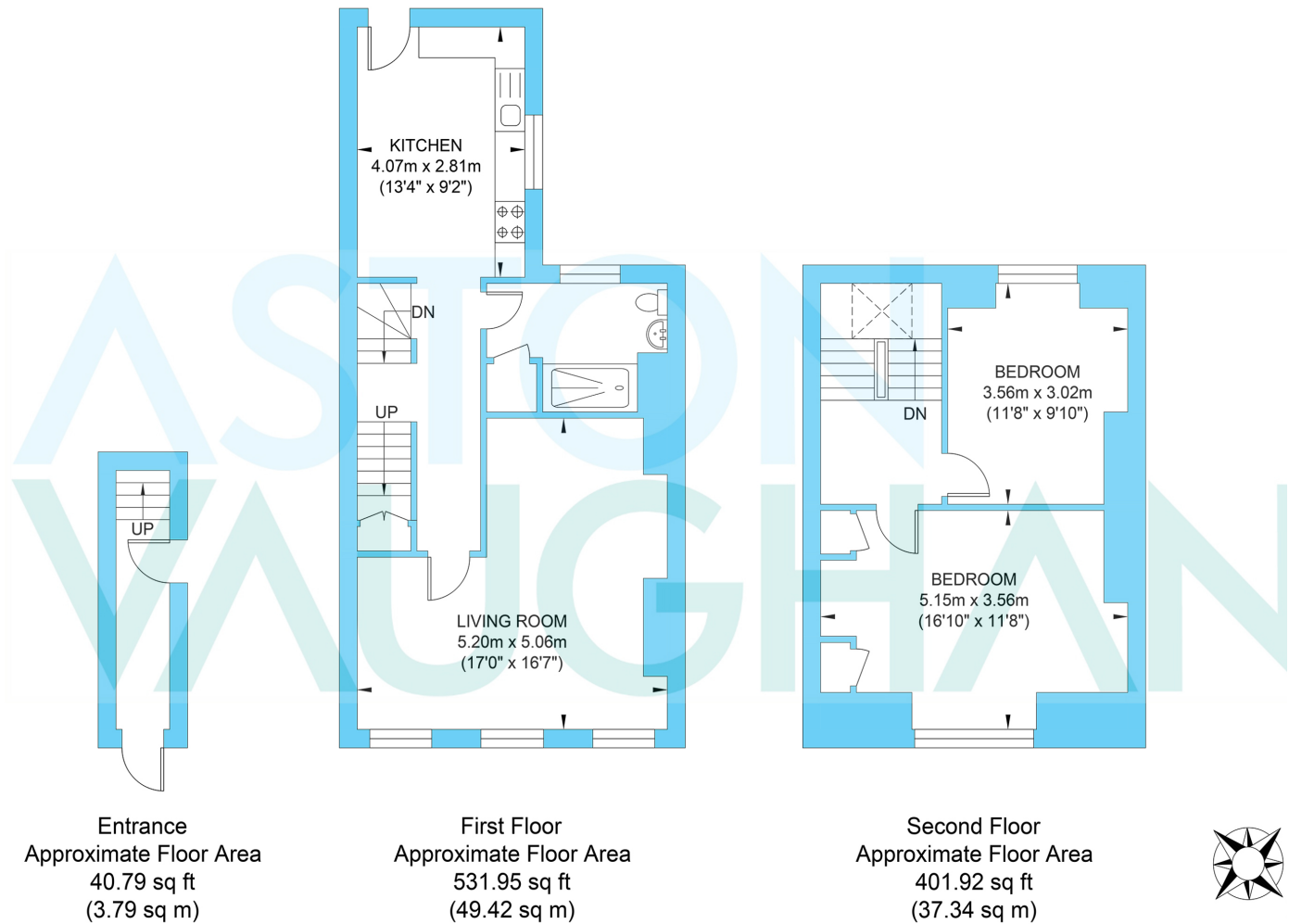
Primary: Stanford Infant and Junior Schools

Secondary: Varndean and Dorothy Stringer, Cardinal Newman RC

Private: Brighton College, Lancing College Prep.

Good to Know:

This is a stylish maisonette sitting in a popular location well served for shops, parks and transport links. There are plenty of local green spaces, but you are also only a short walk or drive from everything this vibrant coastal city has to offer. The A23/A27 and Preston Park Station are also within easy reach, for those requiring fast links to Gatwick or London on a daily or weekly basis.



Approximate Gross Internal Area = 90.55 sq m / 974.67 sq ft
Illustration for identification purposes only, measurements are approximate, not to scale.