



Apartment (EPC Rating: )

## THIRD FLOOR FLAT, 11 BLOOMSBURY PLACE, BRIGHTON, BN2 1DA

# £1,150

**ASTON  
VAUGHAN**  
Sales and Lettings



# 1 Bedroom Apartment located in Brighton

Nestled in the heart of Bloomsbury Place, Brighton, this charming one-bedroom top floor flat offers a delightful living experience in a superb location. The property features a well-appointed reception room, perfect for relaxation or entertaining guests. The bedroom provides a comfortable retreat, while the bathroom is conveniently situated to serve both residents and visitors.

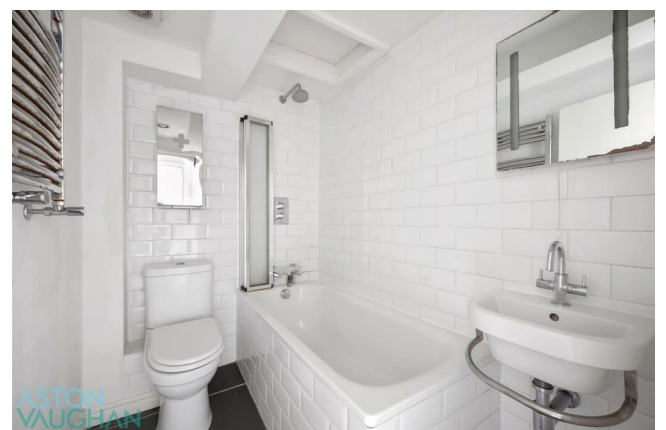
This apartment comes part furnished, including major items, allowing for a seamless move-in experience. Its prime position just off the seafront means that residents can enjoy the vibrant atmosphere of Brighton, with its stunning beaches and lively promenade just a short stroll away. Additionally, the flat is conveniently located near the hospital, making it an ideal choice for healthcare professionals or anyone seeking easy access to medical facilities.

Available for immediate occupancy, this property presents an excellent opportunity for those looking to embrace the coastal lifestyle in one of the UK's most sought-after locations. Don't miss the chance to make this lovely apartment your new home.

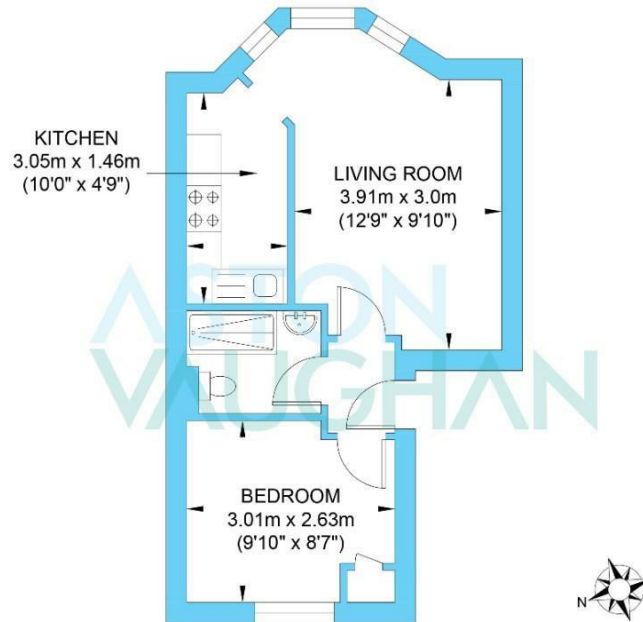
Nestled in the heart of Bloomsbury Place, Brighton, this charming one-bedroom top floor flat offers a delightful living experience in a superb location. The property features a well-appointed reception room, perfect for relaxation or entertaining guests. The bedroom provides a comfortable retreat, while the bathroom is conveniently situated to serve both residents and visitors.

This apartment comes part furnished, including major items, allowing for a seamless move-in experience. Its prime position just off the seafront means that residents can enjoy the vibrant atmosphere of Brighton, with its stunning beaches and lively promenade just a short stroll away. Additionally, the flat is conveniently located near the hospital, making it an ideal choice for healthcare professionals or anyone seeking easy access to medical facilities.

Available for immediate occupancy, this property presents an excellent opportunity for those looking to embrace the coastal lifestyle in one of the UK's most sought-after locations. Don't miss the chance to make this lovely apartment your new home.



## Bloomsbury Place



Ground Floor  
Approximate Floor Area  
324.85 sq ft  
(30.18 sq m)

Approximate Gross Internal Area = 30.18 sq m / 324.85 sq ft  
Illustration for identification purposes only, measurements are approximate, not to scale.

Council Tax Band

Energy Performance Graph

Energy Efficiency Rating		
	Current	Potential
Very energy efficient - lower running costs		
(92 plus) A		
(81-91) B		
(69-80) C		
(55-68) D		
(39-54) E		
(21-38) F		
(1-20) G		
Not energy efficient - higher running costs		
England & Wales	EU Directive 2002/91/EC	

Call us on

**01273 253000**

[info@astonvaughan.co.uk](mailto:info@astonvaughan.co.uk)

[www.astonvaughan.co.uk](http://www.astonvaughan.co.uk)

Agents Note: Whilst every care has been taken to prepare these particulars, they are for guidance purposes only. All measurements are approximate and are for general guidance purposes only and whilst every care has been taken to ensure their accuracy, they should not be relied upon and potential buyers are advised to recheck the measurements.