

House - Terraced (EPC Rating: D)

# 54 WEST HILL STREET, BRIGHTON, BN1 3RS

PCM

## £3,683 PCM

**ASTON  
VAUGHAN**  
Sales and Lettings



# 5 Bedroom House - Terraced located in Brighton

**\*\* MINUTES FROM BRIGHTON STATION // VIRTUAL TOUR // 5 DOUBLE BEDROOMS \*\***

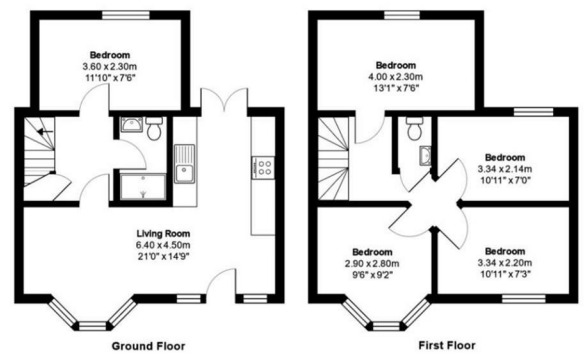
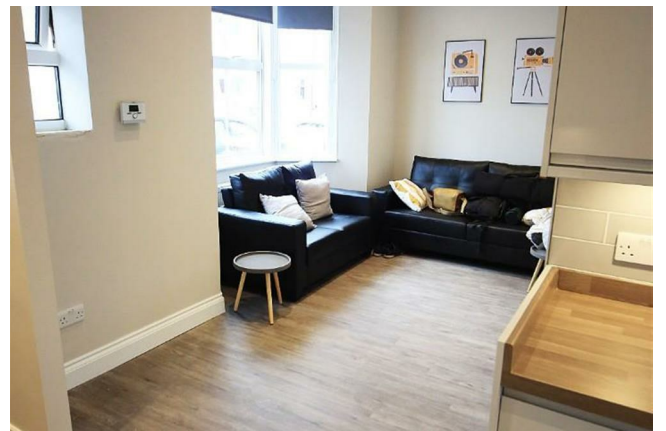
Please note all rooms are now furnished with small double bed, wardrobe, desk & sink. Check out the virtual tour to see the most up to date furnishings!

High-end student house available close to both Brighton Station & the City Centre. Recently renovated and styled to an extremely high level, the house benefits from a modern & spacious open plan kitchen/living room on the ground floor, leading to a patio area to the rear, perfect for an evening drink with friends.

There are 5 double bedrooms, each with small double bed, wardrobe, desk & sink.  
Also 2 shower rooms, with a separate W/C avoiding the queues in the morning!

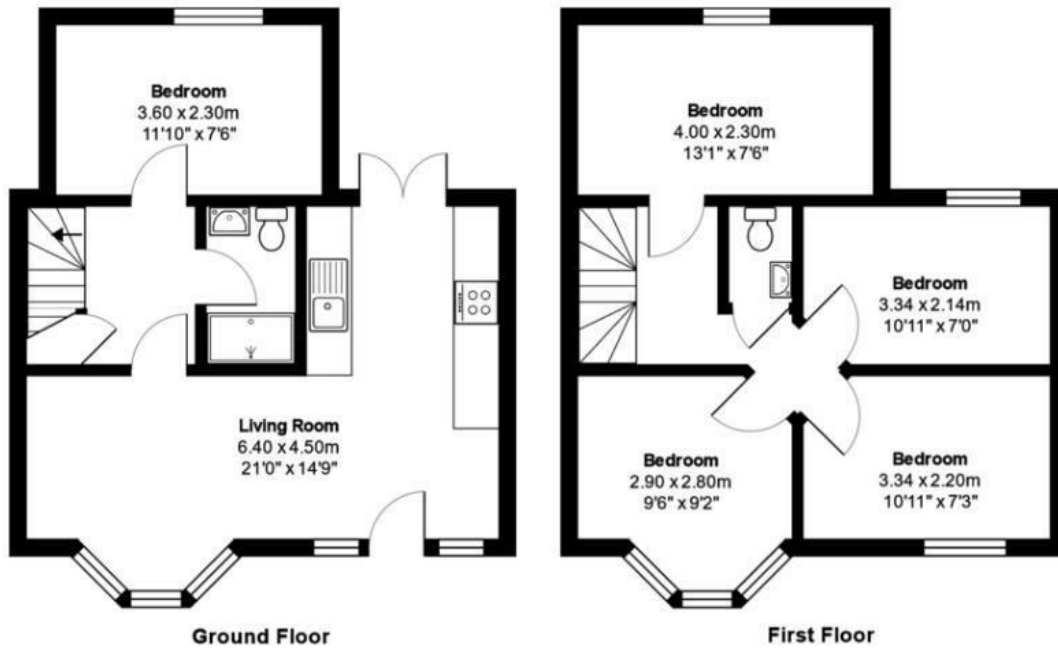
This house is located in West Hill Street, an ideal location for those who need regular access to Brighton Station, being less than 5 minutes down the hill door to door.  
The ever popular 7 dials area is also within a stone's throw, offering a plethora of cafes, bars, restaurants & groceries stores, amongst other useful amenities.  
You can reach the heart of Brighton's teeming city centre within 5 minutes, and the clubs and bars along the seafront are no longer than 20 minutes walk.

Available AUGUST 2025



Total Area: 78.2 m<sup>2</sup> ... 841 R<sup>2</sup>  
 All measurements are approximate and for display purposes only

ASTON VAUGHAN LTD | 7 ST GEORGES ROAD, BRIGHTON, EAST SUSSEX, BN2 1EB



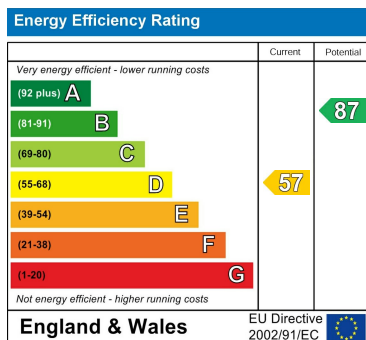
Total Area: 78.2 m<sup>2</sup> ... 841 ft<sup>2</sup>

All measurements are approximate and for display purposes only

Council Tax Band

**D**

Energy Performance Graph



Call us on

**01273 253000**

[info@astonvaughan.co.uk](mailto:info@astonvaughan.co.uk)

[www.astonvaughan.co.uk](http://www.astonvaughan.co.uk)

Agents Note: Whilst every care has been taken to prepare these particulars, they are for guidance purposes only. All measurements are approximate and are for general guidance purposes only and whilst every care has been taken to ensure their accuracy, they should not be relied upon and potential buyers are advised to recheck the measurements.