



Amesbury Avenue, SW2

£850,000

4 1 0 E

• Four Bedrooms

• Freehold

• Chain Free





ABOUT THE PROPERTY

Spacious 4-Bedroom Home on the Sought-After ABC Roads Chain Free

Situated on the highly desirable ABC roads in the heart of Streatham Hill, this well-proportioned family home is offered to the market chain free, providing a rare opportunity for a smooth and swift purchase.

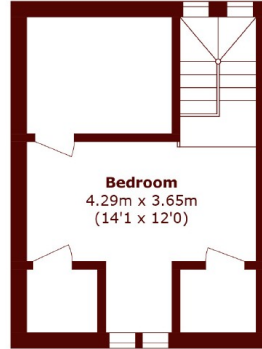
The ground floor features a bright and airy separate living room, perfect for relaxing or entertaining, alongside a kitchen and a separate room with ample space for dining. A convenient utility room offers additional storage and leads directly onto a private garden, ideal for outdoor living and entertaining.

Upstairs, the first floor boasts three generous double bedrooms and a contemporary family bathroom, offering plenty of space for a growing family. The top floor completes the home with a spacious double bedroom, featuring excellent built-in storage within the eaves, making it a perfect retreat or guest space.

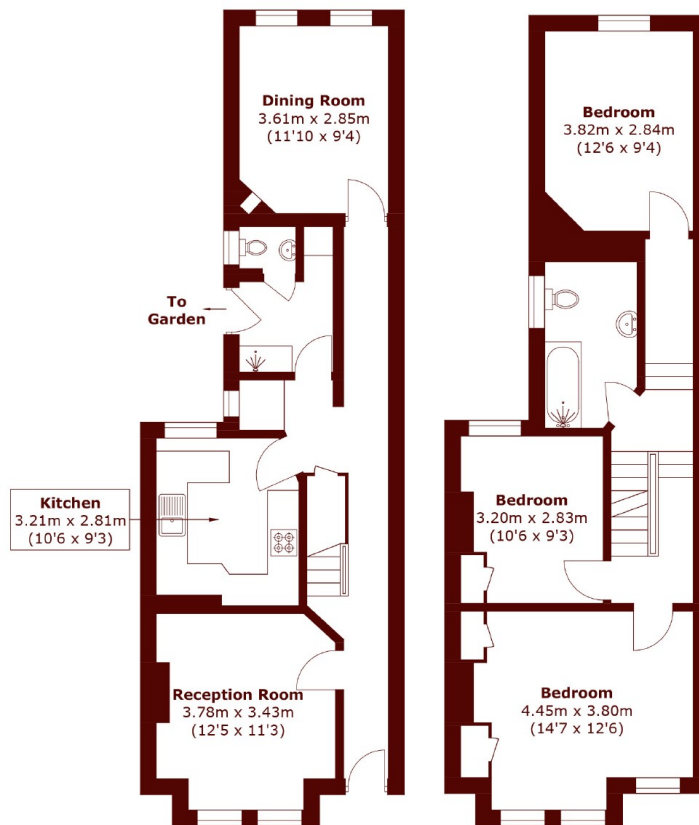
Located just a short walk from Streatham Hill station and the vibrant local amenities, this is a superb home in a prime location. Early viewing is highly recommended.

This charming period home is located on the highly





Second Floor



Ground Floor

First Floor

Total area (approx.): 131.8 sq. m (1,418.6 sq. ft)

Marsh & Parsons Marsh & Parsons

113-117 Streatham Hill,
London, SW2 4UG
020 8671 0171

We aim to make our particulars both accurate and reliable. However, they are not guaranteed; nor do they form part of an offer or contract. If you require clarification on any points then please contact us, especially if you're traveling some distance to view. Please note that appliances and heating systems have not been tested and therefore no warranties can be given as to their good working order.