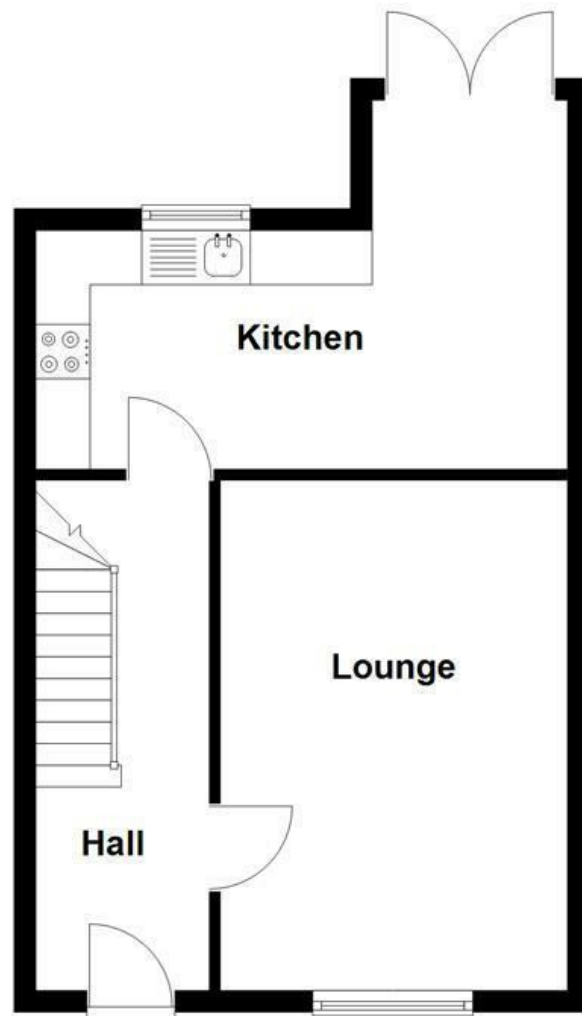
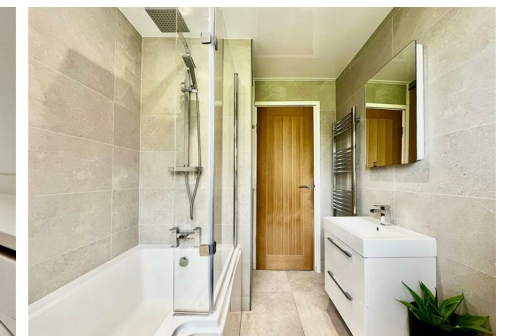
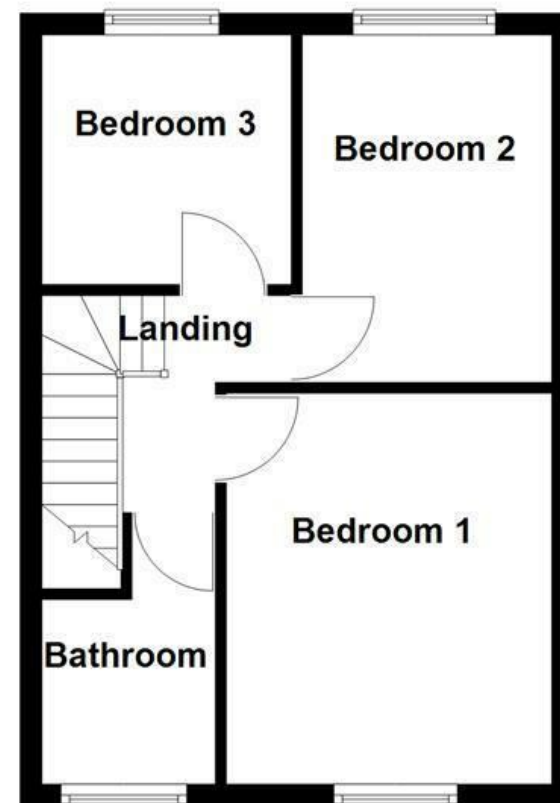


Ground Floor



First Floor



Energy Efficiency Rating		
	Current	Potential
Very energy efficient - lower running costs		
(92 plus) <b>A</b>		90
(81-91) <b>B</b>		
(69-80) <b>C</b>	71	
(55-68) <b>D</b>		
(39-54) <b>E</b>		
(21-38) <b>F</b>		
(1-20) <b>G</b>		
Not energy efficient - higher running costs		
England & Wales		
EU Directive 2002/91/EC		

These particulars, whilst believed to be accurate are set out as a general outline only for guidance and do not constitute any part of an offer or contract. Intending purchasers should not rely on them as statements of representation of fact, but must satisfy themselves by inspection or otherwise as to their accuracy. No person in this firm's employment has the authority to make or give any representation or warranty in respect of the property.

## Chapel Croft, Oldham, OL2 5JU

### Offers Over £190,000

This beautifully maintained three-bedroom terraced property offers an ideal home for first-time buyers, families, or investors alike. Situated in a popular residential area, the home boasts a spacious and light-filled interior with modern décor throughout.

Downstairs comprises a welcoming lounge, a contemporary fitted kitchen/diner, and direct access to the private rear garden—perfect for outdoor entertaining or relaxing. Upstairs features two generously sized double bedrooms, a third single bedroom ideal as a home office or nursery, and a stylish family bathroom.

Externally, the enclosed rear garden provides a low-maintenance outdoor space with lawn and patio areas, ideal for children or pets.

Conveniently located close to local amenities, reputable schools, and excellent transport links, this turn-key property is ready to move into. Early viewing is highly recommended.



Chapel Croft, Oldham, OL2 5JU  
Offers Over £190,000

3 1 2 C

- 3 Bedrooms
- Leasehold
- Garden to Rear
- Council Tax Band B
- Parking to the rear
- EPC Rating C

**Lounge**  
10'5" x 15'5" (3.2m x 4.7m)

**Kitchen**  
9'2" x 7'2" (2.8m x 2.2m)

**Bedroom One**  
11'9" x 9'10" (3.6m x 3m)

**Bedroom Two**  
10'5" x 8'2" (3.2m x 2.5m)

**Bedroom Three**  
7'6" x 7'6" (2.3m x 2.3m)

**Bathroom**  
6'2" x 7'10" (1.9m x 2.4m)

