



77
Cornhill



77 CORNHILL

LONDON EC3

1,335 - 4,749 SQ FT

A prime city office in the heart of EC3.

77 Cornhill provides modern office accommodation set behind an attractive Portland stone facade in the heart of the City of London.

Prominently located on the north side of Cornhill in close proximity to some of London's major landmarks including the Royal Exchange, Lloyd's of London, Leadenhall Market and the Bank of England.

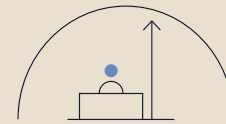




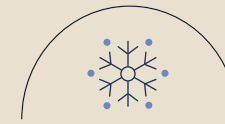
3rd & 7th floors have been fully refurbished.

Plus a part fit out in situ.

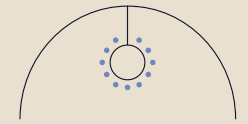
AMENITIES



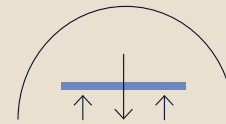
DOUBLE HEIGHT
RECEPTION



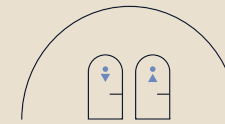
NEW AIR
CONDITIONING



LED
LIGHTING



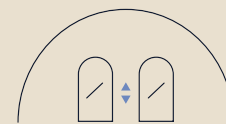
FULLY ACCESSIBLE
RAISED FLOORS



WC'S ON
EACH FLOOR



COMMISSIONAIRE



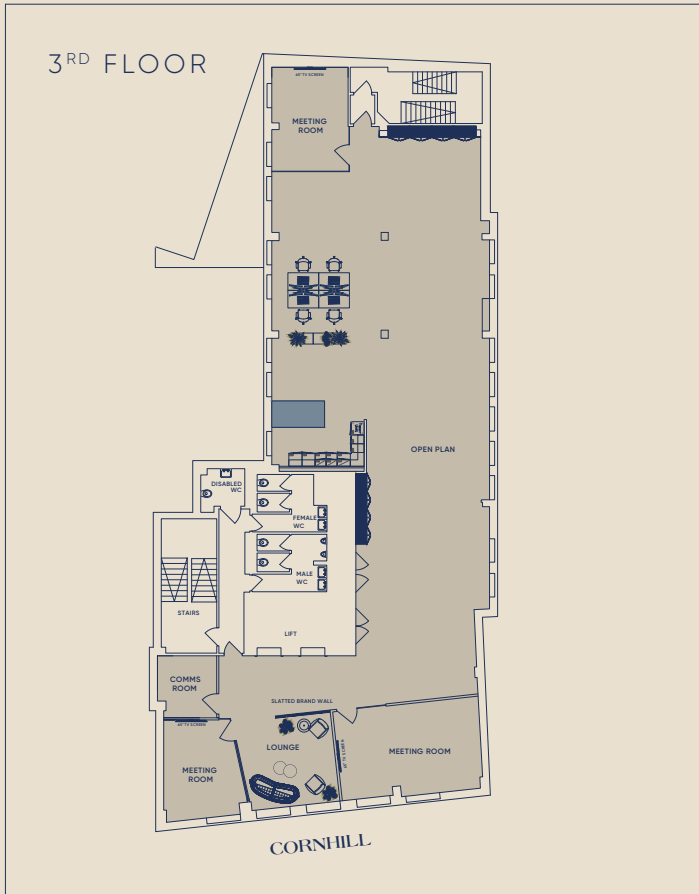
2 PASSENGER
LIFTS



24HR ACCESS
AND SECURITY



SHOWER
FACILITIES



ACCOMODATION SCHEDULE

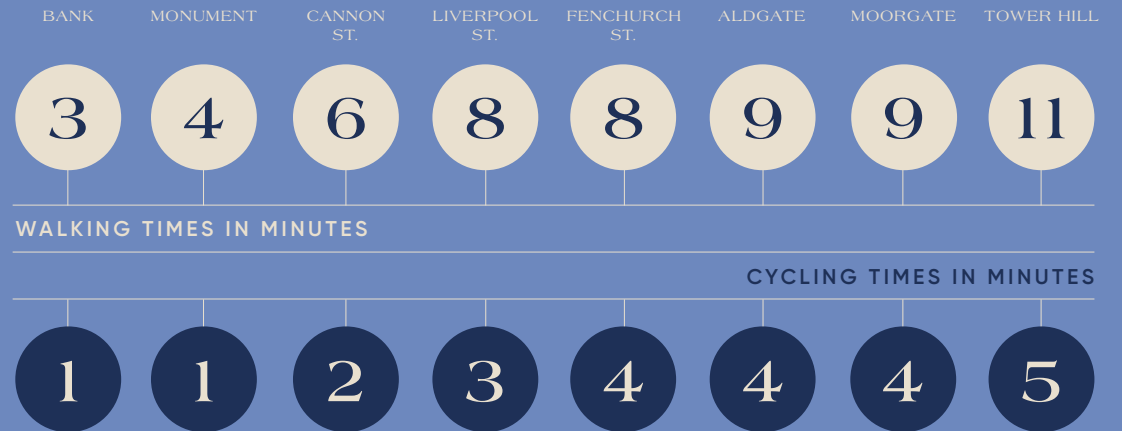
FLOOR	SQ FT	SQ M
7 TH FLOOR	1,335	124
3 RD FLOOR	3,414	317
TOTAL	4,749	441



Transport connections are excellent.

Bank Station is only moments away. Cannon Street, Monument, Liverpool Street and Moorgate stations are all within close walking distance with the latter providing access to the Elizabeth line.

CONNECTIVITY



All times approximate.



● Parks and gardens

A lively central London area.

Situated just a 2-minute walk from Bank Underground Station, 77 Cornhill is one of the most well-connected buildings in the heart of the City Core providing occupiers with excellent transport links across Central London and further afield.

With a plethora of luxury hotels, restaurants, bars, and historical landmarks in close proximity, 77 Cornhill is well positioned to provide occupiers with an array of local amenities.

LOCAL OCCUPIERS



- | | |
|------------------------------|---|
| 01 Goodman's City | 09 Burger & Lobster |
| 02 Coq D'Argent | 10 Le Relais de venise l'Entrecote |
| 03 Ivy Asia | 11 Fenchurch |
| 04 Brigadiers | 12 Searcy's |
| 05 Cecconi's | 13 Blacklock City |
| 06 Cabotte | 14 Bob Bob Ricard |
| 07 Coya City | 15 Farmer J |
| 08 Hawksmoor Guidhall | |



- | | |
|--|---|
| 01 Where's Fred's? | 07 The Moniker |
| 02 The Anthologist | 08 Patch East |
| 03 Clays | 09 The Craft Beer Co, St. Mary Axe |
| 04 The Gobpsy | 10 The Alice |
| 05 Curator's Coffee Studio | 11 The Wren Coffee |
| 06 Balls Brothers Minster Court | 12 Oeno House |
| | 13 The Folly |



- | | |
|---|-----------------------------------|
| 01 The Ned | 07 Sky Garden |
| 02 One new change shopping centre | 08 Spitalfields market |
| 03 Puttshack | 09 Boom Cycle |
| 04 Guildhall Library | 10 Gymbox Bank |
| 05 Threadneedles, Autograph Collection | 11 Foundry Bank |
| 06 Leadenhall Market | 12 Four Seasons Trinity Sq |
| | 13 Escape Entertainment |



Get in touch:

ALL TERMS: On application.

CONTACT

HK LONDON

TOM KEMP

Tom@hk-london.com
+44 (0) 207 100 5555

LOUIS JACOBS

Louis@hk-london.com
+44 (0) 207 100 5555

HK LONDON

BH2

SAM BOREHAM

SamB@bh2.co.uk
+44 (0) 207 600 5000

CALLUM STIDSTON-NOTT

CallumS@bh2.co.uk
+44 (0) 207 600 5000

BH₂

MISREPRESENTATION ACT 1967 - HK Property Services Ltd for themselves and for the Vendor. Lessors of this property for whom they act, give notice that: (i) these particulars are a general outline only, for the guidance of prospective purchasers, and do not constitute the whole or any part of an offer or contract. (ii) HK Property Services Ltd cannot guarantee the accuracy of any description, dimensions, references to condition, necessary permissions for use and occupation and other details contained herein and prospective Purchasers or Lessors must not rely on them as statements of fact or representations and must satisfy themselves as to their accuracy. (iii) no employee of HK Property Services Ltd has any authority to make or give any representation or warranty or enter into any contract whatever in relation to the property. (iv) prices/rents quoted in these particulars may be subject to VAT, and (v) HK Property Services Ltd will not be liable, in negligence or otherwise, for any loss arising from the use of these particulars. November 2022. Map data ©2022 Google Maps. Design by darwooddesign.com.