

JOHNSONS & PARTNERS

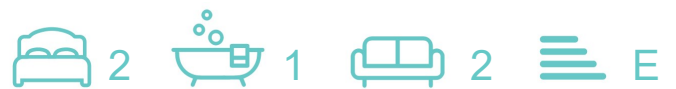
Estate and Letting Agency



42 FORESTER STREET,

NETHERFIELD, NG4 2NG

GUIDE PRICE £165,000



42 FORESTER STREET

, NETHERFIELD, NG4 2NG

GUIDE PRICE £165,000



Located close to the heart of the bustling centre of Netherfield, this delightful two-bedroom, one-bathroom end terrace house is a gem waiting to be discovered.

One of the standout features of this lovely home is the absence of an upward chain, making the buying process a breeze. Imagine the ease and simplicity of making this house your own without any complications.

Convenience is key with this property, as it is situated close to a plethora of excellent amenities. From shops to schools, public transport links including rail services, and various recreational facilities, everything you need is within easy reach.

Ideal for first-time buyers, this house offers a low-maintenance private enclosed rear garden, perfect for relaxing or entertaining guests. The charm of this property truly shines through, making it a wonderful place to call home.

For those eager to experience the warmth and character of this end terrace house, an internal viewing is highly recommended. Don't miss out on the opportunity to make this house your own - contact us now to schedule your viewing appointment.

Reception Hallway

Lounge

14'10 x 12 (4.52m x 3.66m)

Dining Room

12'1 x 11' (3.68m x 3.35m)

Kitchen

14'4 x 7' (4.37m x 2.13m)

First Floor Landing

Bedroom One

12' x 11'11 (3.66m x 3.63m)

Bedroom Two

11'10 x 9'1 (3.61m x 2.77m)

Bathroom

7'9 x 7'1 (2.36m x 2.16m)

Outside

Low Maintenance Walled Front Courtyard

Low Maintenance Enclosed Rear Garden

Agents Disclaimer

Disclaimer - Council Tax Band Rating - Gedling Council – Tax Band A

This information was obtained through the directgov website. Johnsons and Partners offer no guarantee as to the accuracy of this information, we advise you to make further checks to confirm you are satisfied before entering into any agreement to purchase.

The vendor has advised the following:

Property Tenure is Freehold

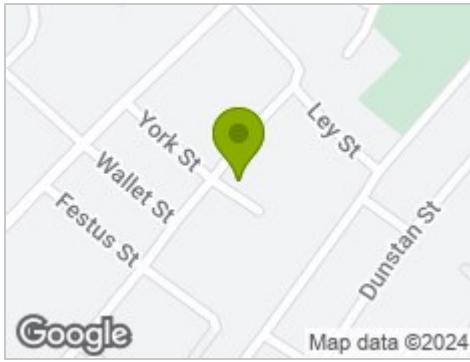
Agents Disclaimer: Johnsons and Partners, their clients and employees 1: Are not authorised to make or give any representations or warranties in relation to the property either here or elsewhere, either on their own behalf or on behalf of their client or otherwise. They assume no responsibility for any statement that may be made in these particulars. These particulars do not form part of any offer or contract and must not be relied upon as statements or representations of fact. 2: Any areas, measurements or distances are approximate. The text, photographs and plans are for guidance only and are not necessarily comprehensive. It should not be assumed that the property has all necessary planning, building regulation or other consents and Johnsons and Partners have not tested any services, equipment or facilities. Purchasers must make further investigations and inspections before entering into any agreement.

Purchaser information -The Money Laundering, Terrorist Financing and Transfer of Funds (Information on the Payer) Regulations 2017(MLR 2017) came into force on 26 June 2017. Johnsons and Partners require any successful purchasers proceeding with a property to provide two forms of identification i.e. passport or photocard driving license and a recent utility bill or bank statement. We are also required to obtain proof of funds and provide evidence of where the funds originated from. This evidence will be required prior to Johnsons and Partners removing a property from the market and instructing solicitors for your purchase.

Third Party Referral Arrangements – Johnsons and Partners have established professional relationships with third-party suppliers for the provision of services to Clients. As remuneration for this professional relationship, the agent receives referral commission from the third-party companies. Details are available upon request.



Road Map



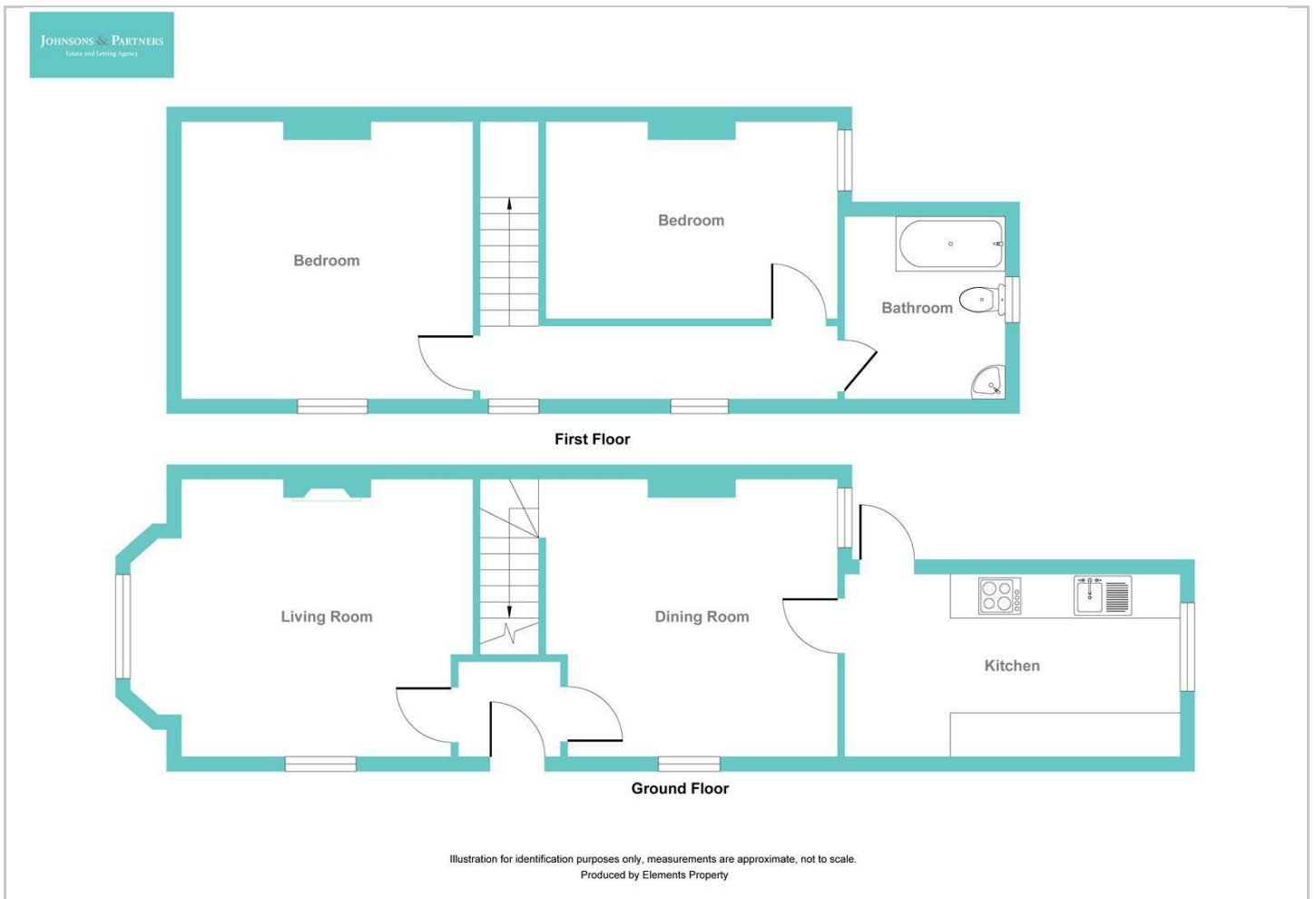
Hybrid Map



Terrain Map



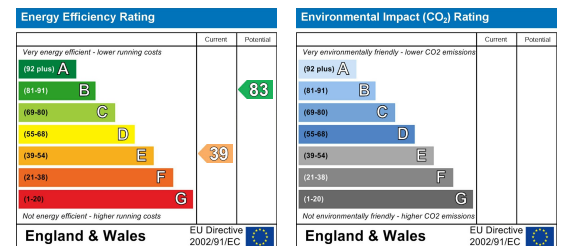
Floor Plan



Viewing

Please contact our Gedling Office on 0115 855 6622 if you wish to arrange a viewing appointment for this property or require further information.

Energy Efficiency Graph



These particulars, whilst believed to be accurate are set out as a general outline only for guidance and do not constitute any part of an offer or contract. Intending purchasers should not rely on them as statements of representation of fact, but must satisfy themselves by inspection or otherwise as to their accuracy. No person in this firm's employment has the authority to make or give any representation or warranty in respect of the property.