

DOWNTOWN

ASSET MANAGEMENT



Apartment 308 D Downtown,, Salford, M5 4YE

Asking price £185,000



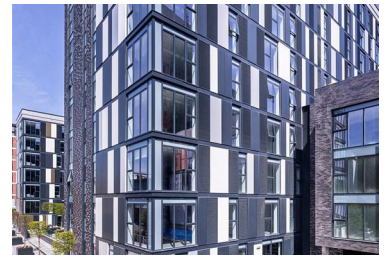
A superb one bedroom corner apartment situated on the third floor in the DOWNTOWN development. The apartment briefly comprises; spacious living area with large corner windows, contemporary kitchen with range of appliances, large double bedroom and a 'jack & jill' bathroom.

Downtown offers a host of hotel-style services, including a concierge located within the lobby, an onsite gymnasium and spa, a business centre, a media room for movies and rooftop terraces

Located on the banks of the River Irwell and adjacent to the historic quarter of Castlefield Manchester, Downtown is a prestigious "hotel-style" development, comprising 374 one, two and three bedroom apartments in Manchester. The Manhattan-inspired development has been specifically designed to exceed all expectations.

Viewing by appointment.

- A Superb One Bedroom Corner Apartment
- Open Plan Lounge, Kitchen, Diner
- Spacious Double Bedroom
- Hotel Style Services With 24/7 Concierge
- Business Centre & Entertainment Suite.
- Dual Aspect
- Jack & Jill Bathroom
- Lift Access
- Gym, Steam Room & Sauna
- Roof Top Terrace



1 St Georges Court, Altrincham Business Park, Altrincham, WA14 5UA

Tel: 0800 118 2884 Email: downtown@mcgoffgroup.com