

Queens Road Clevedon BS21 7TF

£400,000

marktempler

RESIDENTIAL SALES





Property Type

House - Semi-Detached



How Big

1339.00 sq ft



Bedrooms

3



Reception Rooms

1



Bathrooms

1



Warmth

Gas Central Heating



Parking

Driveway



Outside

Rear Garden



EPC Rating

E



Council Tax Band

D



Construction

Standard



Tenure

Freehold

Nestled on the ever-desirable Queens Road, this elegant Victorian home is bursting with potential, ready to be transformed into a breathtaking period residence. Just moments from Clevedon's vibrant town centre, the fashionable Hill Road, and the stunning seafront, this is an opportunity not to be missed.

Step inside, and you'll immediately appreciate the grandeur of this home. Soaring ceilings in the sitting room and principal bedrooms create a sense of space and elegance, while the original Victorian staircase serves as a striking centerpiece, leading gracefully to the first floor. Every corner of this property whispers of character and history, waiting to be brought back to life with a touch of modern refinement.

To the rear, a private garden offers a peaceful retreat, a place to unwind and soak in the charm of this historic home. The driveway, a rare find in such a sought-after location, provides ample off-road parking.

Now in need of updating, this is an exceptional chance for those with vision to craft something truly special. Whether you're drawn to its timeless architecture, its unbeatable location, or the sheer potential it holds, this Victorian gem is ready to be loved once again. Offered to the market with no onward chain, this is your invitation to create the home of your dreams.



Charming Victorian home bursting with character and potential, perfectly positioned in the heart of Clevedon just moments from the town centre and Hill Road.



HOW TO BUY THIS PROPERTY

To proceed with a purchase, we require the following:

Proof of Identification - Full name, date of birth, and residential addresses for the past three years (for a free electronic ID check).

Proof of Funding - For a mortgage: an up-to-date agreement in principle and a savings statement for the balance. For cash: an official statement showing the required funds.

Proof of Chain - If selling through another agent, provide their details and linked transactions.

These requirements are largely legal obligations. We may share this information with the vendor and relevant parties to help present your offer positively and ensure a speedy response.

We also work with trusted professionals to enhance your moving process. If you choose to use their services, we may receive referral fees: **Star Legal**: £225 + VAT **M C Hullah and Co**: £225 + VAT **Head Projects (Surveyors)**: 12.5% of net commission **The Mortgage Centre**: 20% of net commission. All referral fees are included in any quotes provided, and there's no obligation to use these services.



Material Information

UTILITIES

Mains electric, water and drainage. Gas central heating.

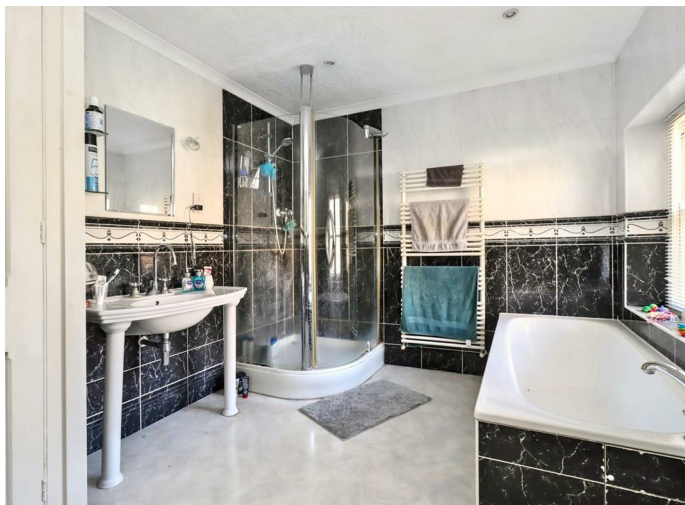
This information has been provided by the sellers and is correct to the best of our knowledge

BROADBAND AND MOBILE COVERAGE

Ultrafast broadband available with highest available download speed 1800 Mbps and highest available upload speed 220 Mbps.

Mobile coverage is limited to likely.

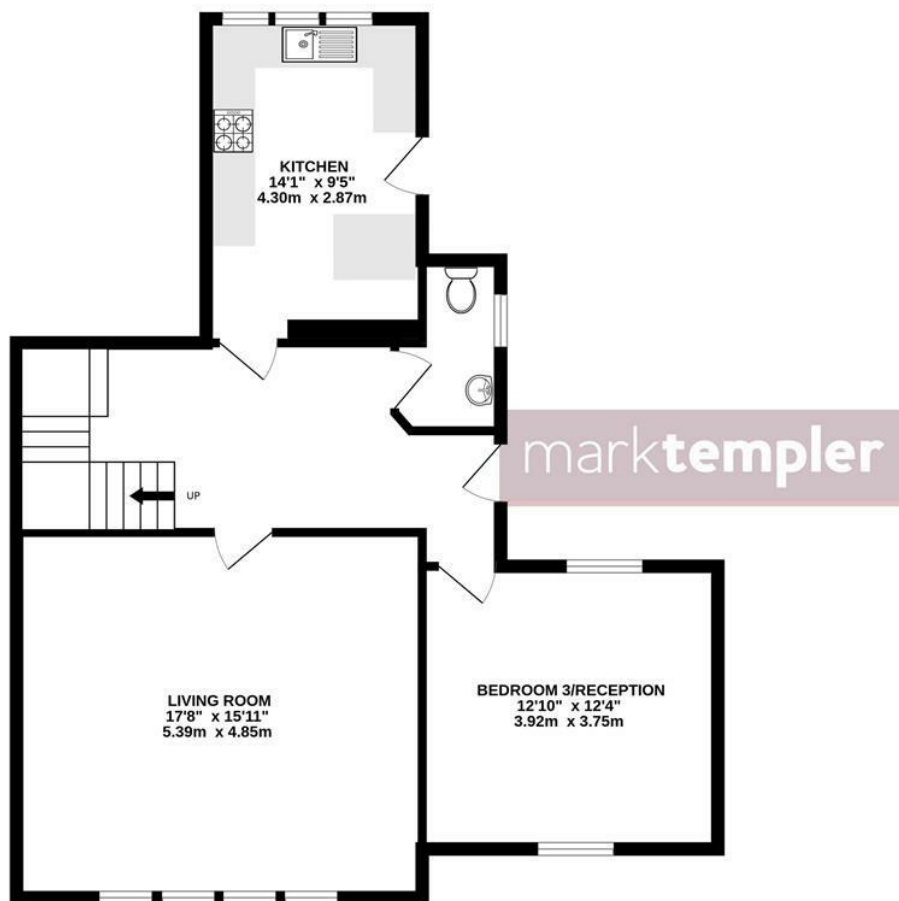
This information is sourced via the Sellers and checker.ofcom.org.uk, we advise you make your own enquires.



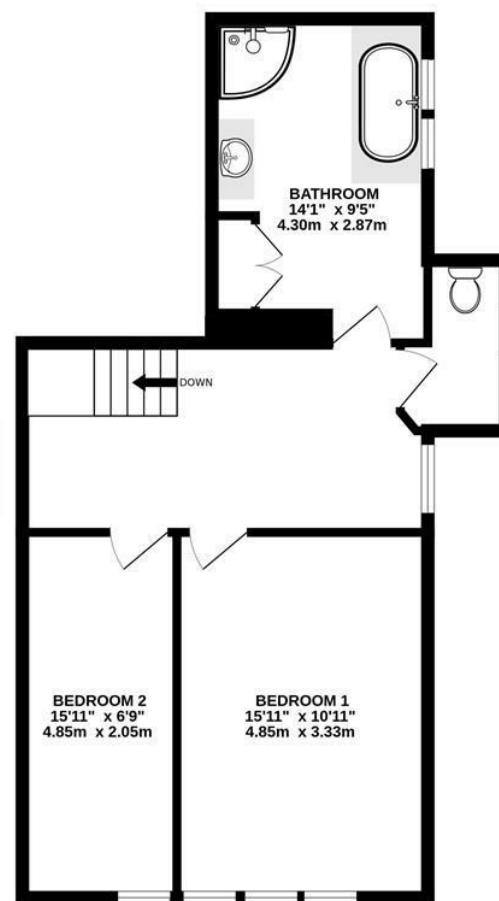
For the latest properties and local news follow Mark Templer Residential Sales, Clevedon on:



GROUND FLOOR
759 sq.ft. (70.5 sq.m.) approx.



1ST FLOOR
579 sq.ft. (53.8 sq.m.) approx.



TOTAL FLOOR AREA : 1339 sq.ft. (124.4 sq.m.) approx.

Whilst every attempt has been made to ensure the accuracy of the floorplan contained here, measurements of doors, windows, rooms and any other items are approximate and no responsibility is taken for any error, omission or mis-statement. This plan is for illustrative purposes only and should be used as such by any prospective purchaser. The services, systems and appliances shown have not been tested and no guarantee as to their operability or efficiency can be given.
Made with Metropix ©2025