



**Marina Point East Chatham Quays Dock Head Road, Chatham**

In Excess of **£210,000**

Chatham



## Marina Point East Chatham Quays Dock Head Road, Chatham

Convenient, contemporary and chain free are only a few ways to describe this two-double bedroom apartment spanning 718 sq ft with allocated parking, located in this tranquil Marina, moments away from an array of shops, restaurants, gyms and bars.

Council Tax band: E

Tenure: Leasehold

EPC Energy Efficiency Rating: C

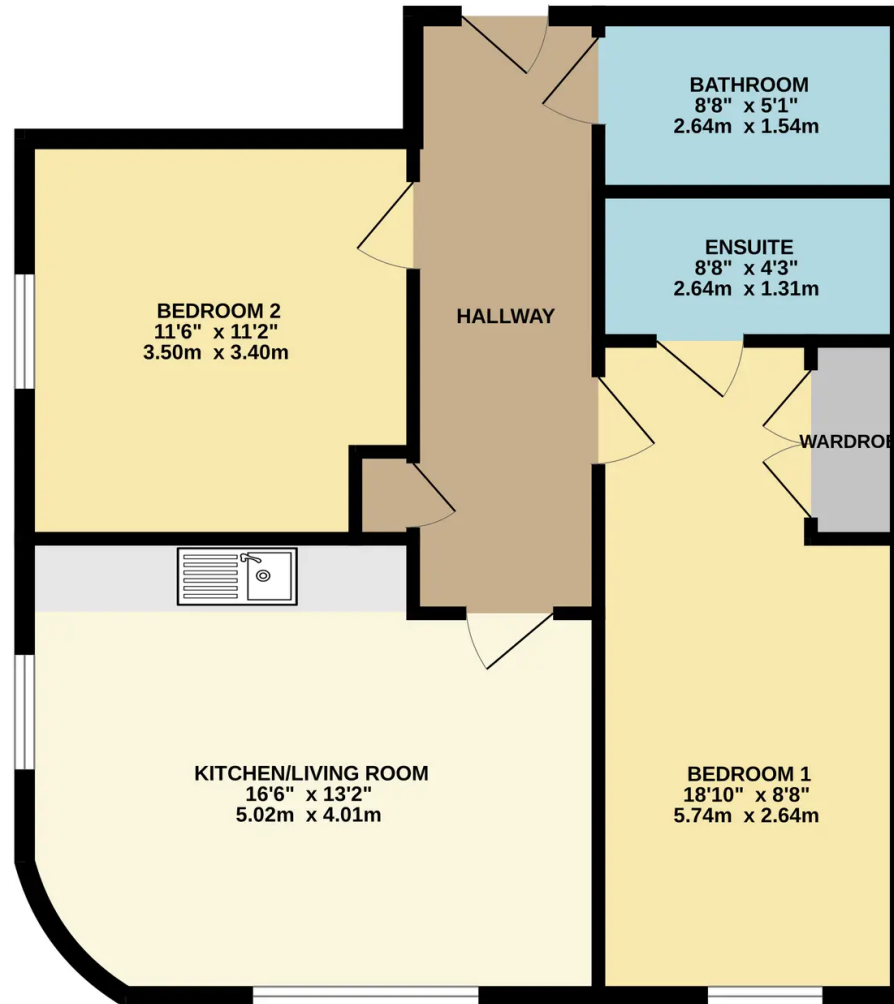
EPC Environmental Impact Rating:

- TWO-DOUBLE BEDROOM APARTMENT
- LOCATED ON 9TH FLOOR
- SOUGHT-AFTER WATERSIDE DEVELOPMENT
- PANORAMIC RIVER VIEWS
- HIGH SPECIFICATION
- EN-SUITE TO PRINCIPAL BEDROOM
- ONSITE GYMS, SHOPS, RESTAURANTS AND BARS
- ALLOCATED PARKING
- ATTRACTIVE YIELD OPPORTUNITY
- NO CHAIN





GROUND FLOOR  
664 sq.ft. (61.7 sq.m.) approx.



TWO BED APARTMENT - ILLUSTRATIVE PURPOSES ONLY

TOTAL FLOOR AREA : 664 sq.ft. (61.7 sq.m.) approx.

Whilst every attempt has been made to ensure the accuracy of the floorplan contained here, measurements of doors, windows, rooms and any other items are approximate and no responsibility is taken for any error, omission or mis-statement. This plan is for illustrative purposes only and should be used as such by any prospective purchaser. The services, systems and appliances shown have not been tested and no guarantee as to their operability or efficiency can be given.  
Made with Metropix ©2023



You can include any text here. The text can be modified upon generating your brochure.

