

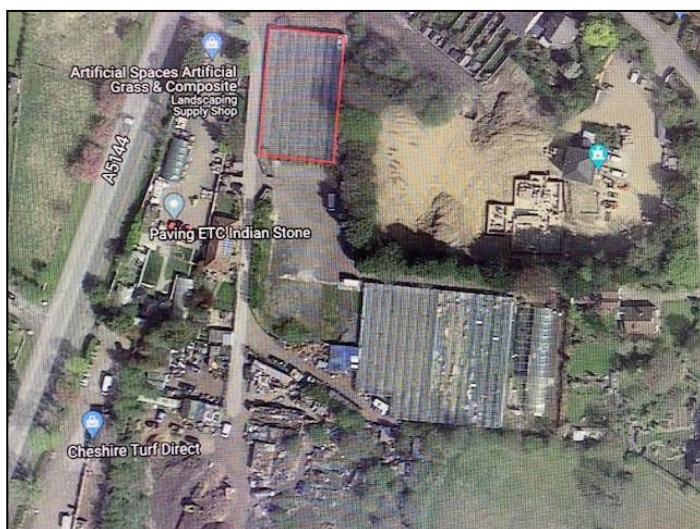
**CLAY LANE NURSERIES  
CLAY LANE/THORLEY LANE  
TIMPERLEY, CHESHIRE WA15 7AF  
TO LET - £1,000 PCM**



**BLOCK 1, HORTICULTURAL SITE  
WHICH INCLUDES 8 GLASS HOUSES  
OFFERING HARDSTANDING  
12,000 SQ.FT. (1,114 SQ.M)(0.28 ACRES)  
SUITABLE FOR HORTICULTURAL OR STORAGE**

Situated just off Thorley lane close to the junction with Clay lane we are able to offer to the market a glass house and external storage. See availability list below.

The main access is off Thorley lane with the benefit of a secondary access off Clay Lane. The site benefits from perimeter fencing, electric gated access and mains electric and water.



**Block 1** (12,000 sq.ft.)(1,114 sq.m)(0.28 acres) **£1,000 pcm**  
8 Glass houses with communal parking. (with electric and water if required)

### **Lease Terms**

Available on flexible terms not exceeding an initial term of 2 years.

### **Viewing Arrangements**

by appointment through Thomas Willmax on 0161 905 3555

These particulars are believed to be accurate but they are not guaranteed and do not form a contract. Neither Thomas Willmax nor the vendor or lessor accept any responsibility in respect of these particulars which are not intended to be statements or representations of fact and any intending purchaser or lessee must satisfy himself by inspection or otherwise as to the correctness of each of the statements contained in these particulars.