

BROOKE

AN IMPRESSIVE DETACHED
FAMILY HOME FILLED
WITH A WEALTH
OF NATURAL LIGHT

BEDS:

4



BROOKE
FOUR
BEDROOM
HOME



PERFECT INTERIORS

Carefully designed with day to day living in mind, the impressive open plan kitchen / dining area is the real hub of the home and provides the perfect social space for cooking and entertaining. The contemporary Symphony fitted kitchen and separate utility offer an abundance of storage facilities, cleverly hidden within sleek units which are fully customisable dependent on build stage. The dining area benefits from stunning views over the rear garden through the French doors allowing the area to be filled with a wealth of natural light creating a bright and airy ambience.

STUNNING FEATURES

Off the entrance hall you'll find the convenient cloakroom and substantial lounge featuring an attractive bay window, a perfect homely space for all the family to relax at the end of the evening.

ENDLESS POSSIBILITIES

Upstairs boasts three double bedrooms and one single. Bedroom two would make an ideal guest room with a range of storage facilities, the third bedroom would be perfect as a child's bedroom. Bedroom four is again a fantastic size and would be ideal for a growing child or functional home office with ample space for storage. All bedrooms benefit from access to the stunning family bathroom complete with a sparkling white Roca suite and complementing chrome fixtures and fittings.

STYLISH LUXURY

The master bedroom is a haven of tranquillity, the perfect place for relaxation at the end of the day. Enjoy the privacy of your own en suite facilities complete with stylish mirror fronted wardrobes.



GROUND
FLOOR



FIRST
FLOOR

BROOKE
PROPERTY
INFORMATION

FIRST FLOOR:

BEDROOM 1
3.55m x 2.62m
11'8" x 8'7"

EN SUITE

BEDROOM 2
3.29m x 3.31m
10'9" x 10'10"

BEDROOM 3
3.38m x 2.83m
11'1" x 9'3"

BEDROOM 4
2.79m x 2.57m
9'2" x 8'5"

BATHROOM

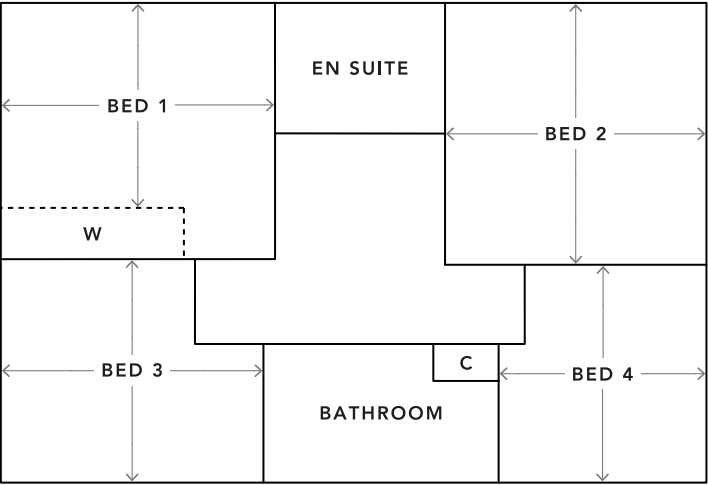
GROUND FLOOR:

LOUNGE
3.47m x 6.18m
11'5" x 20'3"

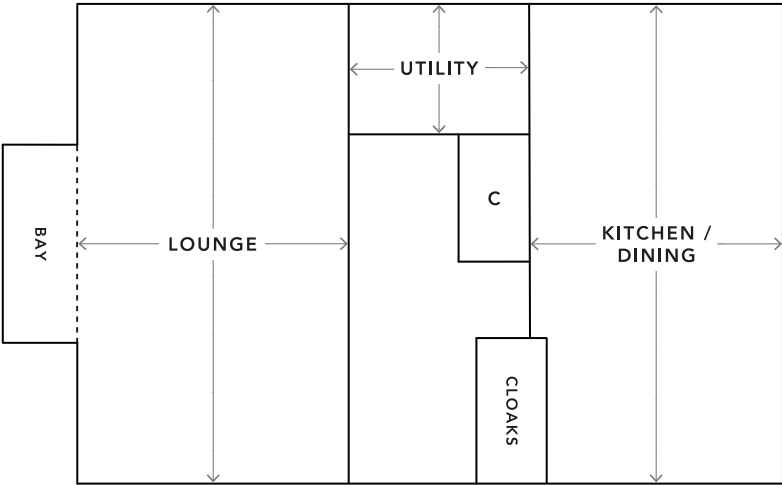
KITCHEN / DINING
3.25m x 6.18m
10'8" x 20'3"

UTILITY
2.18m x 1.60m
7'2" x 5'3"

CLOAKS

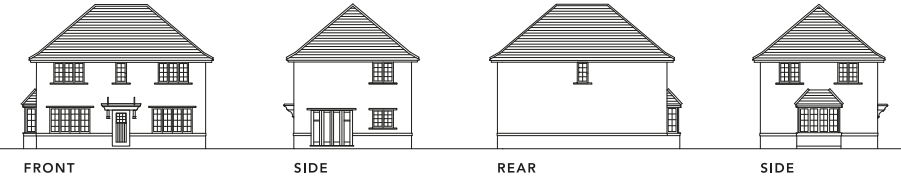


FIRST FLOOR



GROUND FLOOR

- W** - Fitted Wardrobes
C - Storage
▲ - External Access
← → - Measurement Points



The room sizes shown above are approximate overall finished room sizes of the areas indicated and are subject to normal building tolerances (ie ± 75mm). Elevations shown are not intended to represent any particular plot. Purchasers are advised to inspect plot specific information available from our sales team.

REV:

FEB 2019
RE

BLOOR HOMES

© 2019 Bloor Homes

BLOOR HOMES®

© 2019 Bloor Homes • 472 RE Rev A

These particulars are intended as a preliminary guide for prospective purchasers and should not be relied upon. The elevational treatment for individual house types shows a typical arrangement. Details of materials and design treatments may vary. Any artist impressions shown are not intended to represent any particular plot. Purchasers are advised to inspect the layout plan to establish the arrangement of the house and surrounding property. Internal layouts show a general arrangement which may vary from plot to plot. Room sizes given are approx, overall finished room sizes and subject to normal building tolerances (ie ± 75mm). In all instances purchasers are advised to inspect plot specific information available from our sales team. Nothing in these particulars or verbal assurance shall form or constitute part of any contract, and are given without any responsibility on behalf of Bloor Homes.

Bloor Homes
Ashby Road
Measham
Derbyshire
DE12 7JP

hq@bloorhomes.com
www.bloorhomes.com