



2 Floors



3 Bedrooms



Utility



3 En suite



Study

Dressing  
Area

## LACEBY THREE BEDROOM HOME

A three bedroom detached home comprising a spacious lounge with a feature bay window and an impressive open plan kitchen / dining / family room including French doors leading to the garden. A separate utility room, study and cloakroom also complete this floor. Upstairs boasts three generous sized bedrooms with the master benefitting from a dressing area with fitted wardrobes and an en suite bath and shower room. Bed two and three also feature en suite shower rooms.

# LACEBY THREE BEDROOM HOME

## DIMENSIONS

### First Floor:

#### Bedroom 1

4.50m x 3.27m  
14'9" x 10'9"

#### Dressing Area

#### En Suite

#### Bedroom 2

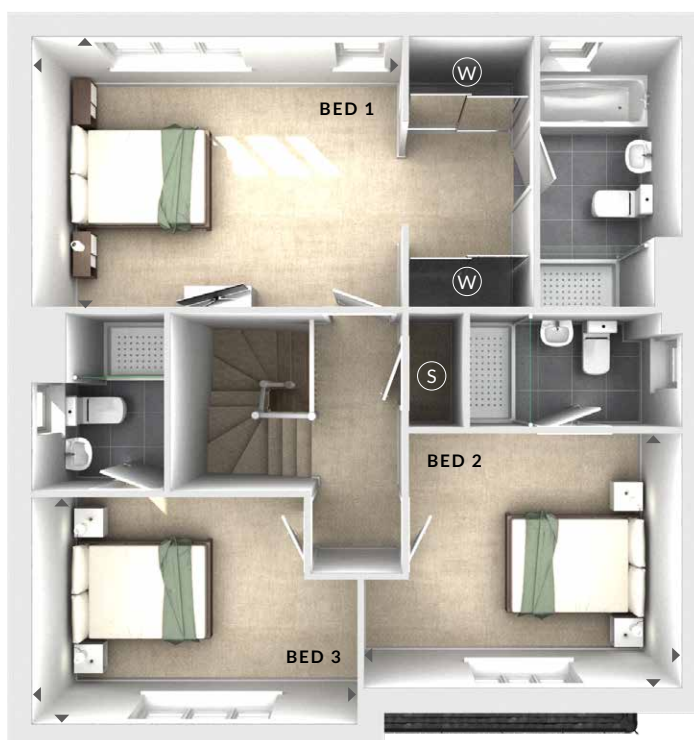
3.86m x 3.10m  
12'8" x 10'2"

#### En Suite

#### Bedroom 3

3.95m x 2.78m  
12'11" x 9'1"

#### En Suite



First Floor

### Ground Floor:

#### Lounge

3.33m x 4.55m  
10'11" x 14'11"

#### Kitchen / Dining / Family

7.88m x 3.19m  
25'10" x 10'6"

#### Utility

1.52m x 1.91m  
5'0" x 6'3"

#### Study

2.69m x 1.66m  
8'10" x 5'5"

(W) Wardrobes

(S) Storage

(C) Cloaks

◀▶ Measurement Points

△ External Access



Ground Floor

© Bloor Homes  
397B 7.0

These particulars are intended as a preliminary guide for prospective purchasers and should not be relied upon. The elevational treatment for individual house types shows a typical arrangement. Details of materials and design treatments may vary. Any artist impressions shown are not intended to represent any particular plot. Purchasers are advised to inspect the layout plan to establish the arrangement of the house and surrounding property. Internal layouts show a general arrangement which may vary from plot to plot. Room sizes given are approx. overall finished room sizes and subject to normal building tolerances (ie ± 75mm). In all instances purchasers are advised to inspect plot specific information available from our sales team. Nothing in these particulars or verbal assurance shall form or constitute part of any contract, and are given without any responsibility on behalf of Bloor Homes.

**BLOOR HOMES**