

**DOUGLAS
FOUR
BEDROOM
HOME**

BLOOR HOMES



A four bedroom detached home comprising a spacious lounge and fantastic open plan kitchen / dining / family area with separate utility, both featuring French doors leading to the rear garden. Off the substantial hallway, you will also discover a separate study and cloakroom. Upstairs is the family bathroom and four double bedrooms, two of which boast an en suite shower room, while the master bedroom also includes a dressing area complete with fitted wardrobes.

DOUGLAS

**AN IMPRESSIVE DETACHED
FOUR BEDROOM FAMILY HOME**

**DOUGLAS
FOUR
BEDROOM
HOME**

FIRST FLOOR:

BEDROOM 1
3.14m x 3.32m
10'4" x 10'11"

EN SUITE

DRESSING

BEDROOM 2
3.56m x 2.43m
11'8" x 8'0"

EN SUITE

BEDROOM 3
3.57m x 2.71m
11'9" x 8'11"

BEDROOM 4
3.73m x 2.63m
12'3" x 8'7"

BATHROOM

GROUND FLOOR:

LOUNGE
3.65m x 5.78m
12'0" x 19'0"

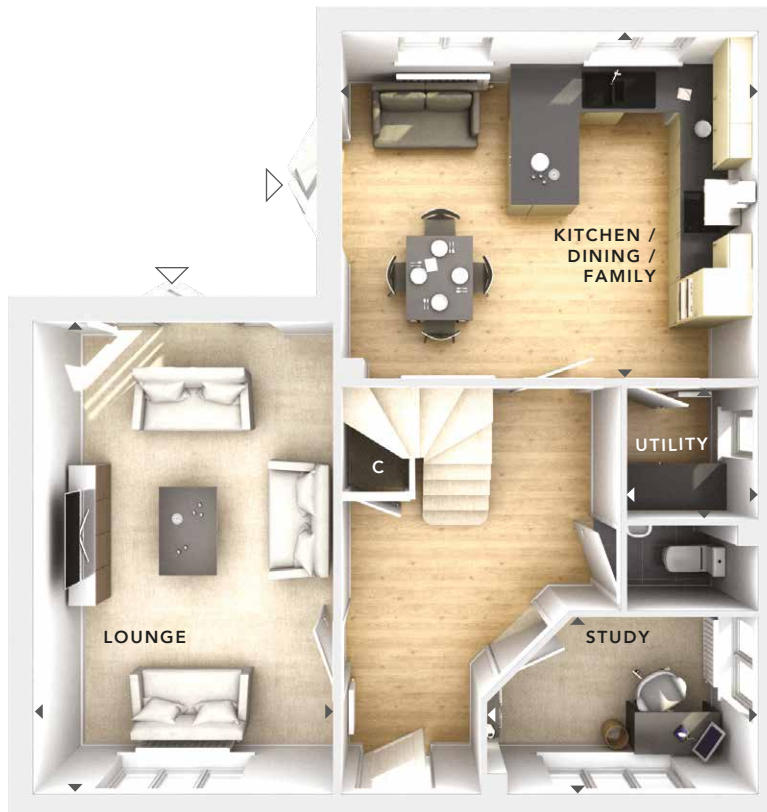
**KITCHEN / DINING /
FAMILY**
5.09m x 4.23m
16'8" x 13'10"

UTILITY
1.59m x 1.62m
5'3" x 5'4"

STUDY
3.32m x 2.16m
10'11" x 7'1"



**FIRST
FLOOR**



**GROUND
FLOOR**

W	- Fitted Wardrobes
C	- Storage
△	- External Access
◀▶	- Measurement Points
© Bloor Homes • 488S 4.2	



These particulars are intended as a preliminary guide for prospective purchasers and should not be relied upon. The elevational treatment for individual house types shows a typical arrangement. Details of materials and design treatments may vary. Any artist impressions shown are not intended to represent any particular plot. Purchasers are advised to inspect the layout plan to establish the arrangement of the house and surrounding property. Internal layouts show a general arrangement which may vary from plot to plot. Room sizes given are approx. overall finished room sizes and subject to normal building tolerances (ie ± 75mm). In all instances purchasers are advised to inspect plot specific information available from our sales team. Nothing in these particulars or verbal assurance shall form or constitute part of any contract, and are given without any responsibility on behalf of Bloor Homes.