



2 Floors



4 Bedrooms



Utility



1 En suite

LOCKE FOUR BEDROOM HOME

A four bedroom detached home with spacious lounge and fantastic open plan kitchen / dining area featuring French doors leading to the rear garden. Upstairs, there are four bedrooms with the master benefitting from fitted wardrobes. The master bedroom also features en suite facilities.

LOCKE FOUR BEDROOM HOME

DIMENSIONS

First Floor:

Bedroom 1

2.77m x 3.28m
9'1" x 10'9"

En Suite

Bedroom 2

3.16m x 3.18m
10'4" x 10'5"

Bedroom 3

2.37m x 3.19m
7'9" x 10'5"

Bedroom 4

2.42m x 2.31m
7'11" x 7'7"

Bathroom



First Floor

Ground Floor:

Lounge

3.78m x 4.37m
12'5" x 14'4"

Kitchen / Dining

6.71m x 4.25m
22'0" x 13'11"

(W) Wardrobes

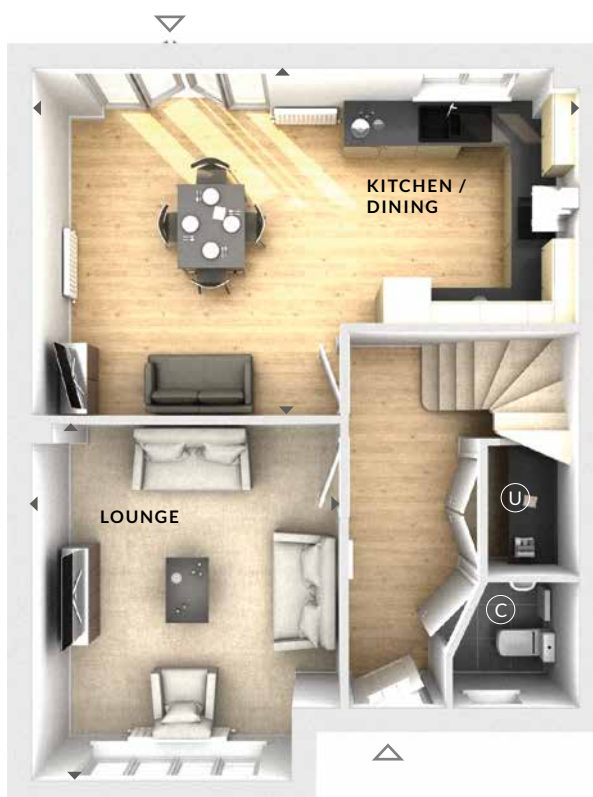
*Wardrobes to bed 4 indicated in selected plots only. Please speak to Sales Advisor for details.

(U) Utility Cupboard

(C) Cloaks

◀▶ Measurement Points

△ External Access



Ground Floor