

DAVENANT
FOUR
BEDROOM
HOME

BLOOR HOMES

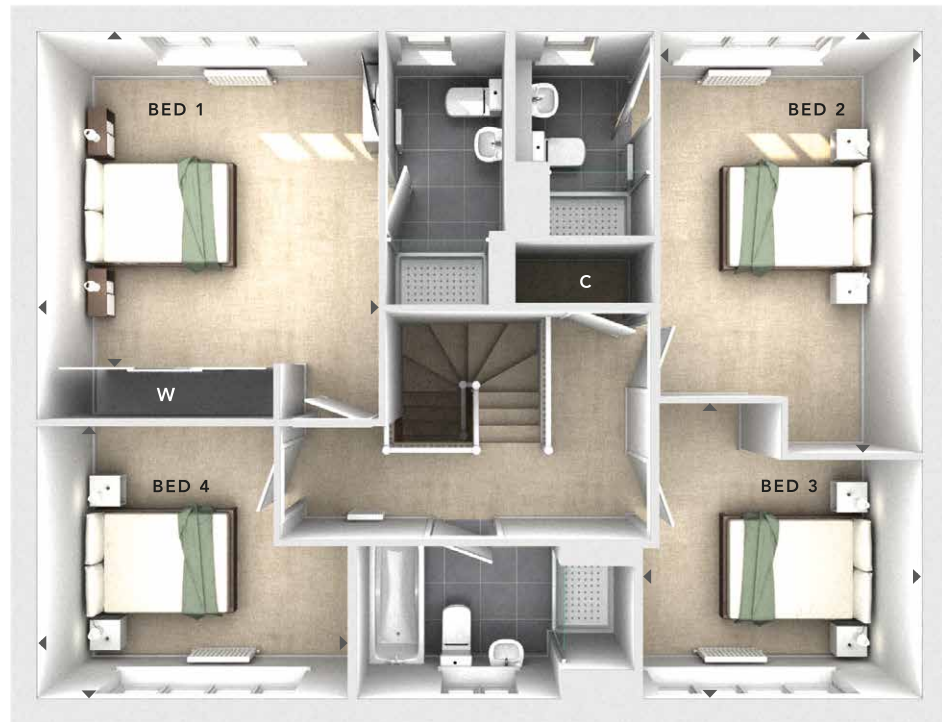


A four bedroom detached home featuring a generously sized lounge featuring a bay window, study, an outstanding open plan kitchen / dining / family area with a utility room and French doors opening onto the rear garden. Upstairs is home to four double bedrooms, two with an en suite shower room and the master bedroom complete with fitted wardrobes.

DAVENANT

A BEAUTIFUL FOUR
BEDROOM FAMILY HOME

**DAVENANT
FOUR
BEDROOM
HOME**



FIRST FLOOR:

BEDROOM 1
3.92m x 3.80m
12'10" x 12'6"

EN SUITE

BEDROOM 2
3.00m x 4.84m
9'10" x 15'10"

EN SUITE

BEDROOM 3
3.19m x 3.38m
10'5" x 11'1"

BEDROOM 4
3.56m x 3.11m
11'8" x 10'2"

BATHROOM

GROUND FLOOR:

LOUNGE
4.07m x 4.44m
13'4" x 14'7"

**KITCHEN / DINING /
FAMILY**
10.16m x 3.05m
33'4" x 10'0"

UTILITY

STUDY
3.58m x 2.03m
11'9" x 6'8"

CLOAKS

**FIRST
FLOOR**



**GROUND
FLOOR**

W	- Fitted Wardrobes
C	- Storage
U	- Utility
△	- External Access
◀▶	- Measurement Points
© Bloor Homes • 485B 4.3	



These particulars are intended as a preliminary guide for prospective purchasers and should not be relied upon. The elevational treatment for individual house types shows a typical arrangement. Details of materials and design treatments may vary. Any artist impressions shown are not intended to represent any particular plot. Purchasers are advised to inspect the layout plan to establish the arrangement of the house and surrounding property. Internal layouts show a general arrangement which may vary from plot to plot. Room sizes given are approx. overall finished room sizes and subject to normal building tolerances (ie ± 75mm). In all instances purchasers are advised to inspect plot specific information available from our sales team. Nothing in these particulars or verbal assurance shall form or constitute part of any contract, and are given without any responsibility on behalf of Bloor Homes.