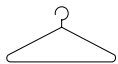




2 Floors



3 Bedrooms



Dressing Area



3 En suites

WIXHAM THREE BEDROOM HOME

A three bedroom detached home with spacious lounge featuring a bay window and fantastic open plan kitchen / dining and family area with French doors leading to the rear garden. Upstairs, there are three generous double bedrooms, each of them with an en suite shower room and the master benefitting from a dressing area with fitted wardrobes included.

WIXHAM THREE BEDROOM HOME

◇ DIMENSIONS

First Floor:

Bedroom 1

4.02m x 2.85m
13'2" x 9'4"

En Suite

Dressing Area

3.10m x 1.87m
10'2" x 6'2"

Bedroom 2

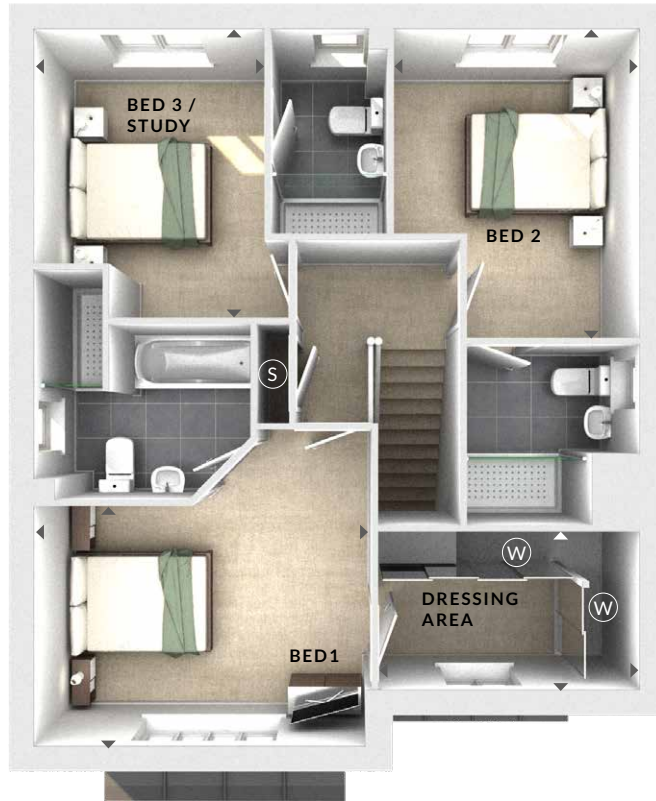
2.92m x 3.68m
9'7" x 12'1"

En Suite

Bedroom 3 / Study

2.76m x 3.44m
9'1" x 11'4"

En Suite



Ground Floor:

Lounge

3.95m x 4.15m
12'11" x 13'7"

Kitchen / Dining / Family

7.20m x 4.25m
23'8" x 13'11"

(S) Storage

(W) Wardrobes

(U) Utility

(C) Cloaks

◀▶ Measurement Points

△ External Access

First Floor



Ground Floor

© Bloor Homes
307R 6.1

These particulars are intended as a preliminary guide for prospective purchasers and should not be relied upon. The elevational treatment for individual house types shows a typical arrangement. Details of materials and design treatments may vary. Any artist impressions shown are not intended to represent any particular plot. Purchasers are advised to inspect the layout plan to establish the arrangement of the house and surrounding property. Internal layouts show a general arrangement which may vary from plot to plot. Room sizes given are approx. overall finished room sizes and subject to normal building tolerances (ie ± 75mm). In all instances purchasers are advised to inspect plot specific information available from our sales team. Nothing in these particulars or verbal assurance shall form or constitute part of any contract, and are given without any responsibility on behalf of Bloor Homes.

BLOOR HOMES