

DRAKE
TWO
BEDROOM
HOME

BLOOR HOMES



A two bedroom terraced home with a perfectly proportioned lounge and a stunning open plan kitchen / dining area with a utility, cloakroom and French doors opening onto the rear garden. Upstairs is home to the family bathroom and two spacious double bedrooms with ample room for storage.

DRAKE

A STYLISH TWO BEDROOM
TERRACED HOME

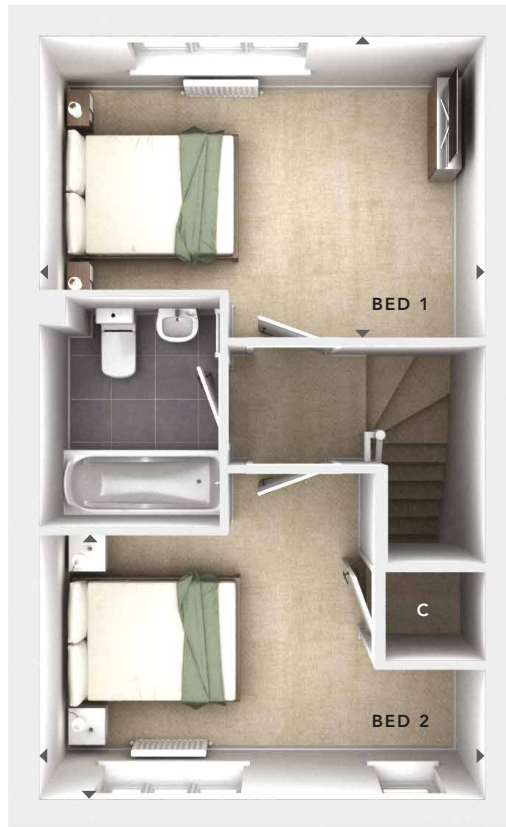
**DRAKE
TWO
BEDROOM
HOME**

FIRST FLOOR:

BEDROOM 1
4.22m x 2.86m
13'10" x 9'4"

BEDROOM 2
4.22m x 2.50m
13'10" x 8'2"

BATHROOM



GROUND FLOOR:

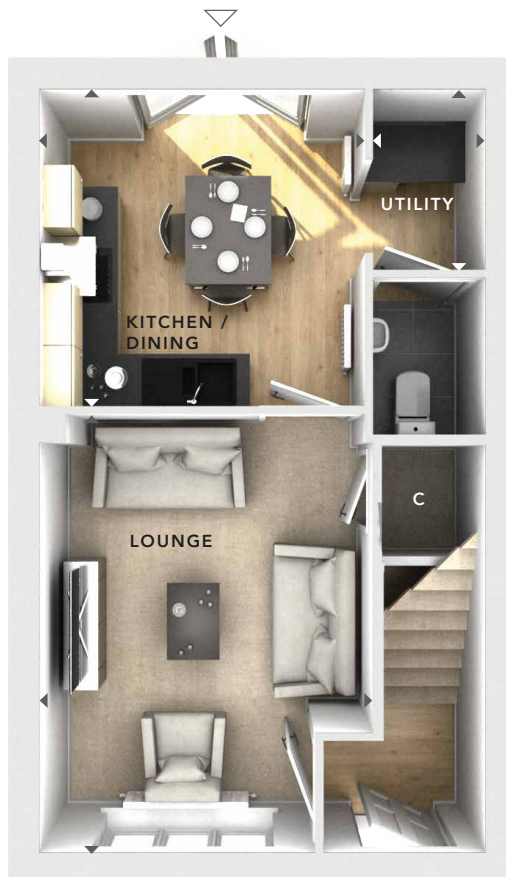
LOUNGE
3.21m x 4.17m
10'6" x 13'8"

KITCHEN / DINING
3.09m x 3.01m
10'2" x 9'10"

UTILITY
1.05m x 1.70m
3'5" x 5'7"

CLOAKS

**FIRST
FLOOR**



**GROUND
FLOOR**

C	- Storage
	- External Access
	- Measurement Points
811 STONE BRIZE MEADOW	



These particulars are intended as a preliminary guide for prospective purchasers and should not be relied upon. The elevational treatment for individual house types shows a typical arrangement. Details of materials and design treatments may vary. Any artist impressions shown are not intended to represent any particular plot. Purchasers are advised to inspect the layout plan to establish the arrangement of the house and surrounding property. Internal layouts show a general arrangement which may vary from plot to plot. Room sizes given are approx. overall finished room sizes and subject to normal building tolerances (ie ± 75mm). In all instances purchasers are advised to inspect plot specific information available from our sales team. Nothing in these particulars or verbal assurance shall form or constitute part of any contract, and are given without any responsibility on behalf of Bloor Homes.