

# High Street

Northwood • Middlesex • HA6 1BN

PCM: £1,750 PCM



coopers  
est 1986

A deceptively spacious three-bedroom apartment in a highly sought-after residential location, ideally positioned close to local schools, a variety of shops and excellent transport links.

Beautifully refurbished and redecorated, the property briefly comprises: its own private entrance, a welcoming hallway with stairs leading to a bright landing, a generously sized lounge, a modern fitted kitchen, three double bedrooms, and a contemporary family bathroom.

Available immediately and offered unfurnished.

Local Authority: London Borough of Hillingdon  
Council Tax: Band C

Newly Decorated & Refurbished

Close to Northwood Tube Station

Family Bathroom

Close to Local School

Three Large Bedrooms

Close to Northwood HQ (NATO)

Modern Appliances

Walking distance to Northwood town centre

Unfurnished

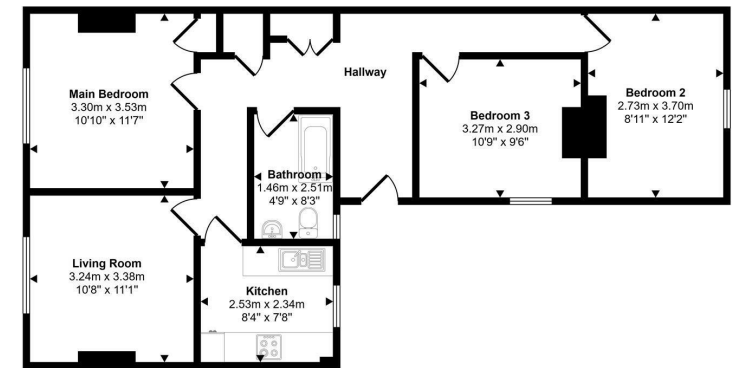
Available IMMEDIATELY

**Available Date**

13th December 2025

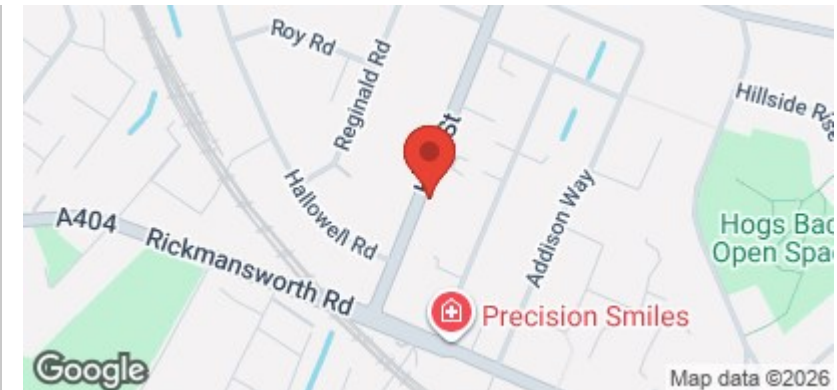


Approx Gross Internal Area  
71 sq m / 769 sq ft



Floorplan

This floorplan is only for illustrative purposes and is not to scale. Measurements of rooms, doors, windows, and any items are approximate and no responsibility is taken for any error, omission or mis-statement. Icons of items such as bathroom suites are representations only and may not look like the real items. Made with Made Snappy 360.



**coopers**  
est 1986

**0208 017 6000**

**18 Bridge Street, Pinner,  
Middlesex, HA5 3JF**

[pinner@coopersresidential.co.uk](mailto:pinner@coopersresidential.co.uk)

**CoopersResidential.co.uk**

Energy Efficiency Rating		Current	Potential
	Very energy efficient - lower running costs		
	A		
	B		
	C		
	D		
	E		
	F		
	G		
	Not energy efficient - higher running costs		
England & Wales		EU Directive 2002/91/EC	
Environmental Impact (CO <sub>2</sub> ) Rating		Current	Potential
	Very environmentally friendly - lower CO <sub>2</sub> emissions		
	A		
	B		
	C		
	D		
	E		
	F		
	G		
	Not environmentally friendly - higher CO <sub>2</sub> emissions		
England & Wales		EU Directive 2002/91/EC	

Important Notice: These particulars, whilst believed to be accurate are set out as a general outline only for guidance and do not constitute any part of an offer or contract. Intending purchasers should not rely on them as statements or representation of fact, but must satisfy themselves by inspection or otherwise has the authority to make or give any representation or warranty in respect of the property.