

23 Carew Road

Northwood • Middlesex • HA6 3NJ

PCM: £2,500 PCM



coopers
est 1986

Set on one of Northwoods PRESTIGIOUS ROADS, Coopers are delighted to present this RECENTLY BUILT, rarely available EXECUTIVE APARTMENT that BOASTS AMPLE LIVING SPACE. First Floor apartment, this property comprises; spacious entrance hallway, LARGE LOUNGE, TWO SPACIOUS BEDROOM with FITTED WARDROBES, modern fitted kitchen and a LUXURIOUS bathroom. Other benefits include; underfloor heating and off street parking.

This LEAFY ROAD is only a short distance to Northwood High Street, Tube Station (Metropolitan Line) and Northwood HQ (NATO) making it extremely convenient for commuters into London and surrounding counties.

Available IMMEDIATELY and offered unfurnished.

Local Authority: London Borough of Hillingdon
Council Tax: Band F

Two bedrooms

First floor apartment

Short distance to Northwood station

Underfloor heating

Close to Northwood HQ

Modern fitted kitchen with appliances

Excellent location

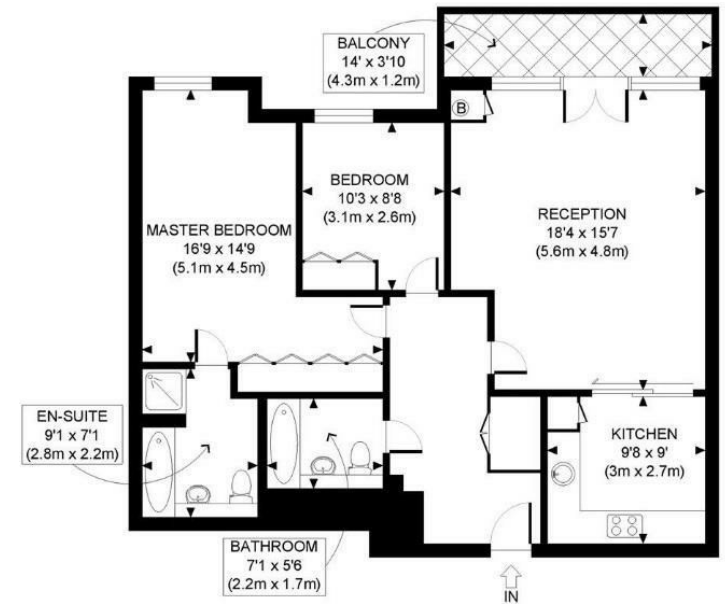
Well maintained communal gardens

Unfurnished

Available IMMEDIATELY

Available Date

2nd January 2025



FIRST FLOOR
GROSS INTERNAL
FLOOR AREA 906 SQ FT

APPROX. GROSS INTERNAL FLOOR AREA: 906 SQ FT/ 84 SQM



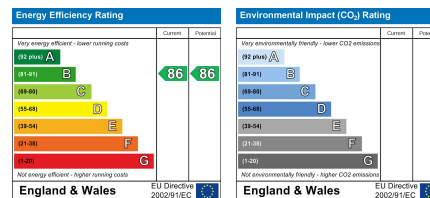
coopers
est 1986

0208 017 6000

**18 Bridge Street, Pinner,
Middlesex, HA5 3JF**

pinner@coopersresidential.co.uk

CoopersResidential.co.uk



Important Notice: These particulars, whilst believed to be accurate are set out as a general outline only for guidance and do not constitute any part of an offer or contract. Intending purchasers should not rely on them as statements or representation of fact, but must satisfy themselves by inspection or otherwise has the authority to make or give any representation or warranty in respect of the property.