

Kewferry Drive

Northwood • Middlesex • HA6 2NF

PCM: £2,100 PCM



coopers
est 1986



A BEAUTIFULLY presented two bedroom, two bathroom GROUND floor apartment benefiting from a wonderfully quiet aspect, set within walking distance to Northwood High Street and it's variety of amenities. This stunning residence boasts an impressive floorplan, showcasing spacious rooms and ready made for an exceptional lifestyle. A wonderful opportunity to own a property in an enviable location.

Close to Northwood tube station and local shops.

Offered Unfurnished and available in November

Local authority: London Borough of Hillingdon
Council tax: Band F

Ground floor

Large bedrooms

En-suite

Close to Northwood HQ

Video entry system

Garage

Walking distance to local amenities

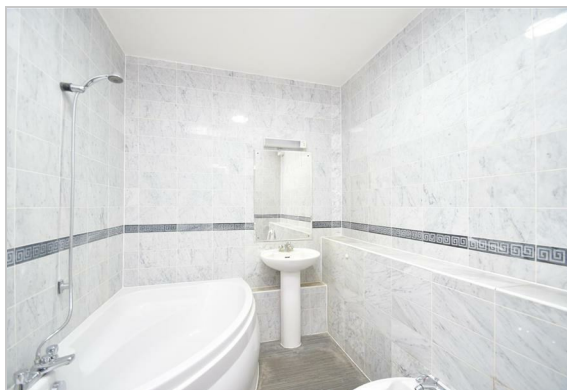
Gas central heating

Furnished

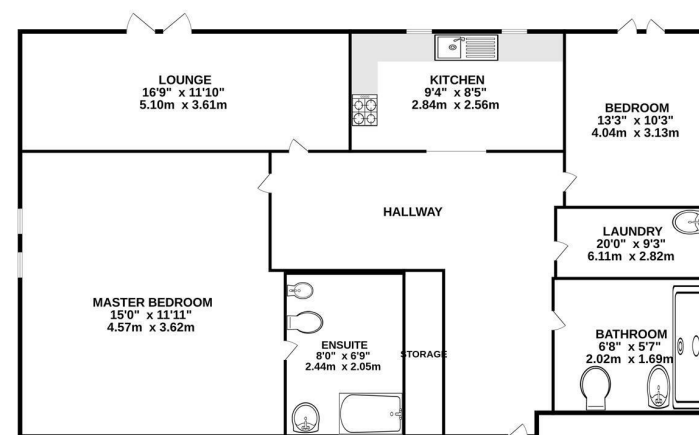
Available in November

Available Date

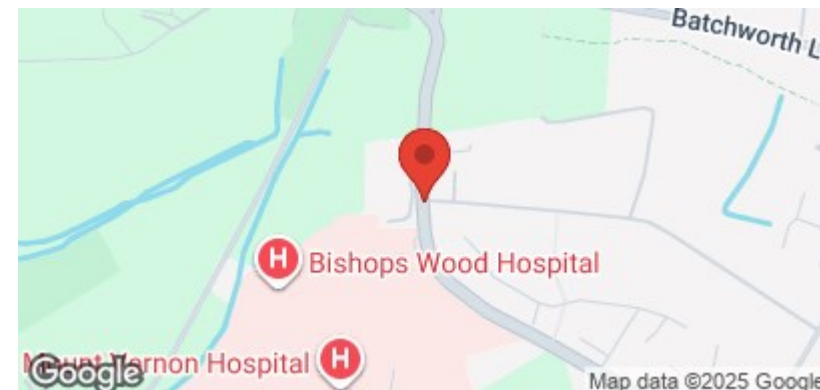
8th November 2025



GROUND FLOOR
926 sq.ft. (86.0 sq.m.) approx.



TOTAL FLOOR AREA: 926 sq.ft. (86.0 sq.m.) approx.
Whilst every attempt has been made to ensure the accuracy of the floorplan, measurements of doors, windows, rooms and any other items are approximate and no responsibility is taken for any error, omission or misstatement. This plan is for guidance purposes only and should be used as such by any prospective purchaser. The services, systems and appliances shown have not been tested and not guaranteed as to their operability or efficiency can be given.
Made with floorplan 3.0.0.0



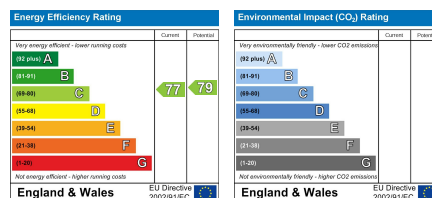
coopers
est 1986

0208 017 6000

**18 Bridge Street, Pinner,
Middlesex, HA5 3JF**

pinner@coopersresidential.co.uk

CoopersResidential.co.uk



Important Notice: These particulars, whilst believed to be accurate are set out as a general outline only for guidance and do not constitute any part of an offer or contract. Intending purchasers should not rely on them as statements or representation of fact, but must satisfy themselves by inspection or otherwise has the authority to make or give any representation or warranty in respect of the property.