

Aspen Grove

Pinner • Middlesex • HA5 2NL

PCM: £2,700 PCM



coopers
est 1986



This IMMACULATELY PRESENTED three double bedroom DETACHED home is situated in a SOUGHT AFTER LOCATION with OUTSTANDING views of the fields and countryside. The property is perfect for the growing family seeking a property situated in a convenient location for a number of highly regarded schools, shopping facilities and transport links.

Aspen Grove is perfectly positioned for EXCELLENT shopping and transport facilities at Northwood Hills, Ruislip, Pinner and Eastcote. Highly regarded nurseries / schools such as Haydon and Coteford are just moments away as well as a number of excellent independent schools nearby.

This SUPERB house briefly comprises: fitted kitchen with all MODERN appliances, family bathroom, a SPACIOUS through lounge with WOODEN FLOORING, three good sized bedrooms with the master boasting an ENSUITE, a BEAUTIFUL large GARDEN, GARAGE and off street parking.

Detached house

Garage

Short distance to Northwood Hills Tube Station

Close to local schools

Private rear garden

Driveway

Modern fitted kitchen

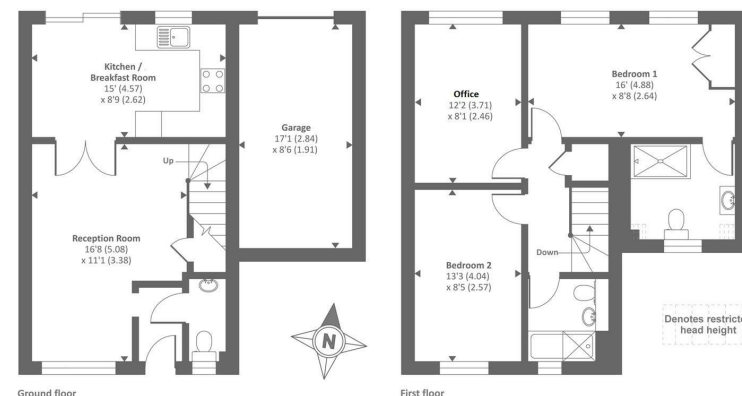
Quiet residential road

Unfurnished

Available in April

Available Date

20th October 2025



Approx. gross internal floor area 1071 SQFT / 99.4 SQM (excludes restricted head height)
Approx. gross external floor area 1320 SQFT / 122.6 SQM



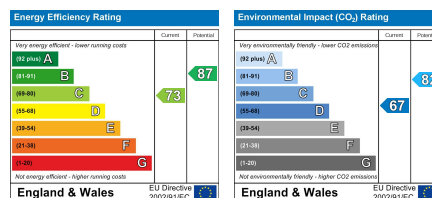
coopers
est 1986

0208 017 6000

**18 Bridge Street, Pinner,
Middlesex, HA5 3JF**

pinner@coopersresidential.co.uk

CoopersResidential.co.uk



Important Notice: These particulars, whilst believed to be accurate are set out as a general outline only for guidance and do not constitute any part of an offer or contract. Intending purchasers should not rely on them as statements or representation of fact, but must satisfy themselves by inspection or otherwise has the authority to make or give any representation or warranty in respect of the property.