

Flowers Avenue

Ruislip • Middlesex • HA4 8GA

PCM: £2,800 PCM



coopers
est 1986

An EXECUTIVE three bedroom townhouse located in the RENOWNED Pembroke Park development within WALKING distance of Eastcote and Ruislip Manor shops and Underground Stations (Metropolitan & Piccadilly Lines). Set over three floors, the top floor offers two double bedrooms (the master bedroom benefits from a STYLISH en-suite), walk in wardrobe and the family bathroom.

On the middle floor you will find the EXPANSIVE contemporary kitchen with integrated appliances and a good selection of units. This flows through to the dining and living area which is accompanied with a balcony. There is also a study/office room on this floor.

On the ground floor there is an integral garage providing INVALUABLE storage and secure off street parking, third double bedroom, utility room and W/C. Added benefits include; driveway, gas central heating and double glazing.

Townhouse

Three spacious bedrooms

Off street parking

Close to Eastcote Tube Station

En-suite

Spacious living/dining area

Garage

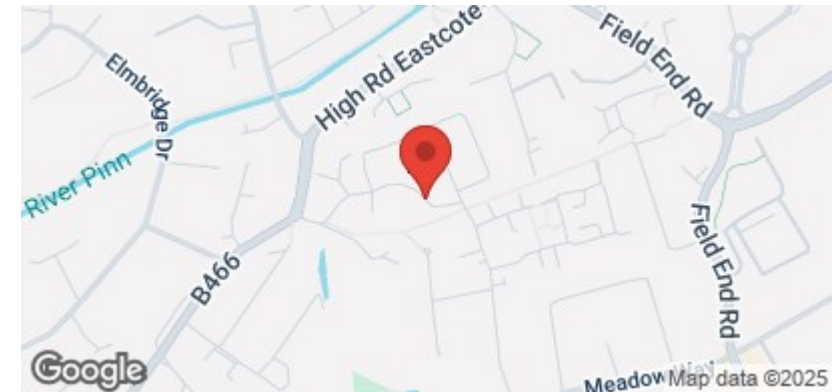
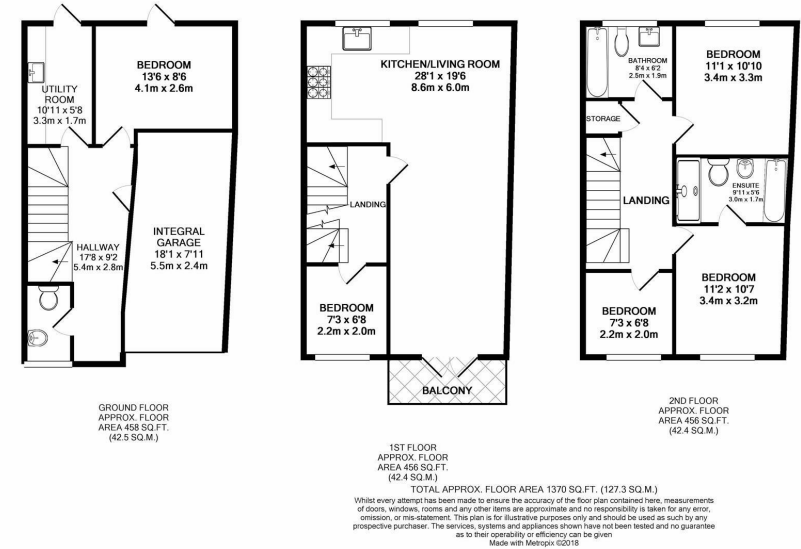
Fully fitted kitchen

Unfurnished

Available in January

Available Date

31st October 2025



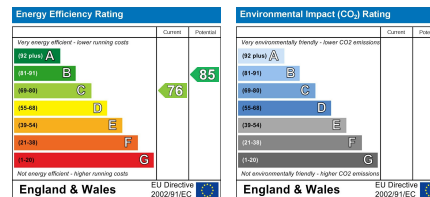
coopers
est 1986

0208 017 6000

**18 Bridge Street, Pinner,
Middlesex, HA5 3JF**

pinner@coopersresidential.co.uk

CoopersResidential.co.uk



Important Notice: These particulars, whilst believed to be accurate are set out as a general outline only for guidance and do not constitute any part of an offer or contract. Intending purchasers should not rely on them as statements or representation of fact, but must satisfy themselves by inspection or otherwise has the authority to make or give any representation or warranty in respect of the property.