

# Chamberlain Way

Pinner • Middlesex • HA5 2AZ

PCM: £1,750 PCM



coopers  
est 1986





We would like to present this BEAUTIFUL TWO bedroom MAISONETTE with PRIVATE GARDEN comprises a modern fitted kitchen and bathroom, two generous sized bedrooms both with fitted wardrobes and a bright reception room.

Chamberlain Way is ideally located moments from the shops, cafes and restaurants in Pinner as well as Pinner Station. Various green open spaces are within easy reach.

Available in August and offer part-furnished

Local authority: London Borough of Hillingdon  
Council tax: Band D

Ground floor maisonette

Two large bedrooms

Private garden

Close to Pinner and Northwood Hills station

Excellent condition

Ample street parking

Wooden flooring throughout

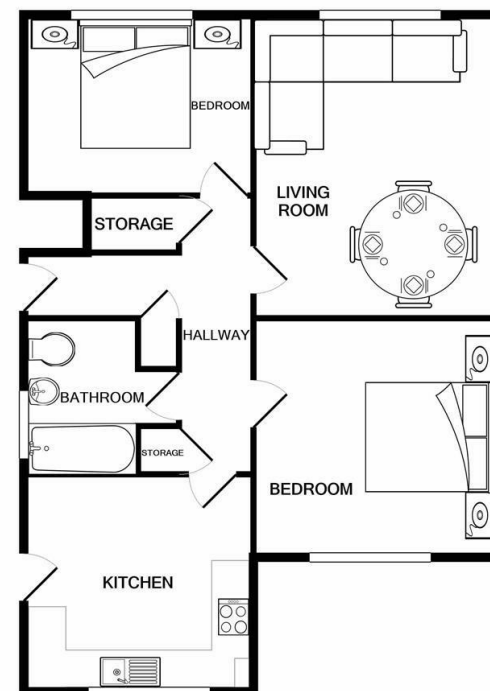
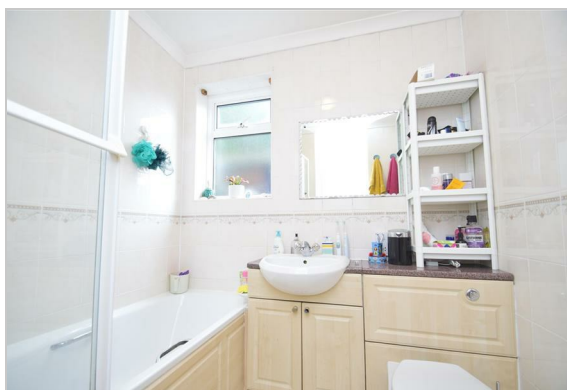
Walking distance to local amenities

Part-furnished

Available in August

**Available Date**

16th August 2025



Whilst every attempt has been made to ensure the accuracy of the floor plan contained here, measurements of doors, windows, rooms and any other items are approximate and no responsibility is taken for any error, omission, or mis-statement. This plan is for illustrative purposes only and should be used as such by any prospective purchaser. The services, systems and appliances shown have not been tested and no guarantee as to their operability or efficiency can be given  
Made with Metropix ©2021

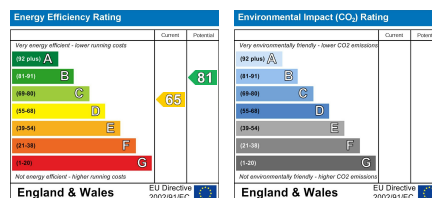


**coopers**  
est 1986

**0208 017 6000**

**18 Bridge Street, Pinner,  
Middlesex, HA5 3JF**  
pinner@coopersresidential.co.uk

**CoopersResidential.co.uk**



Important Notice: These particulars, whilst believed to be accurate are set out as a general outline only for guidance and do not constitute any part of an offer or contract. Intending purchasers should not rely on them as statements or representation of fact, but must satisfy themselves by inspection or otherwise has the authority to make or give any representation or warranty in respect of the property.