

# Rickmansworth Road

Northwood • Middlesex • HA6 2QH

PCM: £4,000 PCM



coopers  
est 1986





Coopers are delighted to present to the market this SPACIOUS and imposing five/six double bedroom family home (with four bathrooms) situated in the heart of Northwood. Offering easy access to local shops, schools and transport links, the downstairs to this stunning property briefly comprises: front porch, welcoming entrance hall, SPACIOUS lounge, impressive kitchen with spacious dining area (which is perfect for entertaining), downstairs bathroom with walk in shower, generously proportioned office/sixth bedroom with ample storage space and extremely spacious fifth bedroom. To the first floor there is a STUNNING master bedroom with extremely high ceilings, ambient lighting, dressing room with fitted wardrobes and its own en suite shower room. Completing the first floor there are two further double bedrooms with fitted wardrobes and a contemporary family bathroom with impressive shower cubicle. To the second floor there is a further generously proportioned double bedroom (again with fitted wardrobes) and a further en suite bathroom.

Semi-detached house

Five bedrooms

Off street parking

Private garden

Walking distance to Northwood Station

Close to Northwood HQ

Modern kitchen

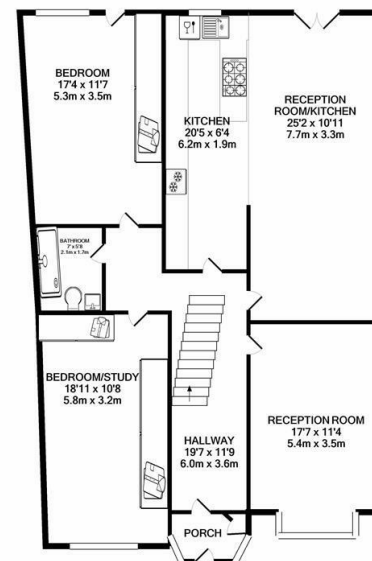
Tiled bathrooms

Unfurnished

Available in July

**Available Date**

19th July 2025

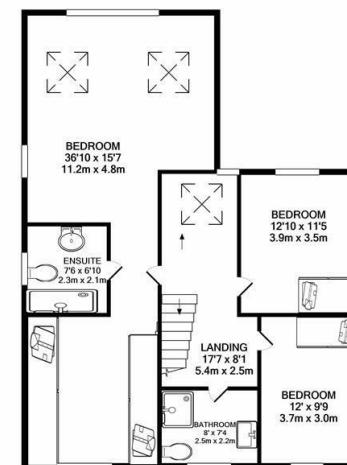


GROUND FLOOR  
APPROX. FLOOR AREA 1217 SQ.FT.  
(113.0 SQ.M.)

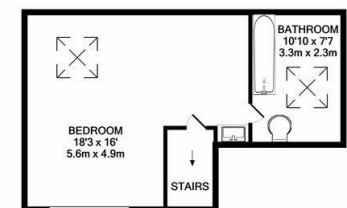
TOTAL APPROX. FLOOR AREA 2425 SQ.FT. (225.3 SQ.M.)

Whilst every attempt has been made to ensure the accuracy of the floor plan contained here, measurements of doors, windows, rooms and any other items are approximate and no responsibility is taken for any error, omission, or mis-statement. This plan is for illustrative purposes only and should be used as such by any prospective purchaser. The services, systems and appliances shown have not been tested and no guarantee as to their operability or efficiency can be given.

Made with Metropix ©2020



1ST FLOOR  
APPROX. FLOOR AREA 849 SQ.FT.  
(78.9 SQ.M.)



2ND FLOOR  
APPROX. FLOOR AREA 380 SQ.FT.  
(35.4 SQ.M.)



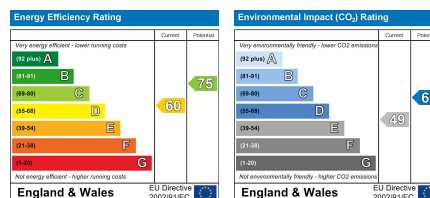
**coopers**  
est 1986

**0208 017 6000**

**18 Bridge Street, Pinner,  
Middlesex, HA5 3JF**

**pinner@coopersresidential.co.uk**

**CoopersResidential.co.uk**



Important Notice: These particulars, whilst believed to be accurate are set out as a general outline only for guidance and do not constitute any part of an offer or contract. Intending purchasers should not rely on them as statements or representation of fact, but must satisfy themselves by inspection or otherwise has the authority to make or give any representation or warranty in respect of the property.