

# Durley Avenue

Pinner • Middlesex • HA5 1JH

PCM: £2,500 PCM



coopers  
est 1986





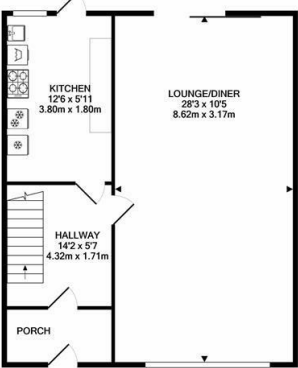
Coopers are delighted to present this POPULAR four bedroom end of terrace house situated WITHIN WALKING distance to local shops, transport links and amenities of Pinner. This MODERN and SPACIOUS property is IDEALLY LOCATED for Pinner and Rayners Lane Tube Station and a number of highly regarded local schools. Comprising: four bedrooms (en-suite to master), family bathroom, reception room, modern kitchen, shed, off street parking, well kept rear garden, double glazing and gas central heating.

Available in June and offered unfurnished.

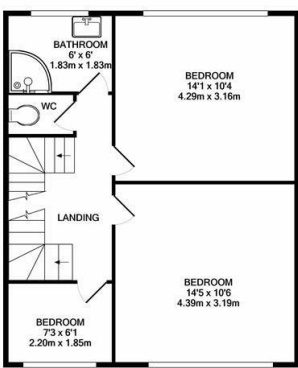
Local authority: London Borough of Harrow  
Council tax: Band E

- Four bedrooms
- Off street parking
- Spacious lounge
- Private garden
- Ensuite
- Gas central heating
- Close to local amenities
- Double glazing
- Unfurnished
- Available in June

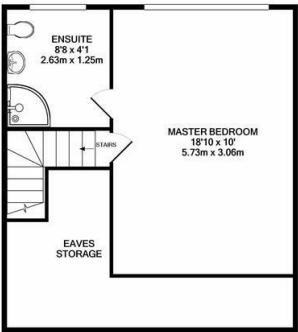
**Available Date**  
21st June 2025



GROUND FLOOR

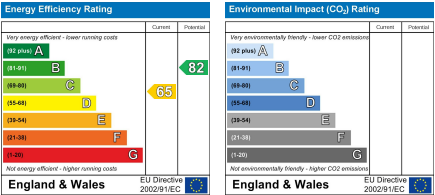


1ST FLOOR



2ND FLOOR

Whilst every attempt has been made to ensure the accuracy of the floor plan contained here, measurements of doors, windows, rooms and any other items are approximate and no responsibility is taken for any error, omission, or mis-statement. This plan is for illustrative purposes only and should be used as such by any prospective purchaser. The services, systems and appliances shown have not been tested and no guarantee as to their operability or efficiency can be given.  
Made with Metropix 10002



Important Notice: These particulars, whilst believed to be accurate are set out as a general outline only for guidance and do not constitute any part of an offer or contract. Intending purchasers should not rely on them as statements or representation of fact, but must satisfy themselves by inspection or otherwise has the authority to make or give any representation or warranty in respect of the property.