

Courtlands Drive

Watford • Hertfordshire • WD17 4JA

PCM: £2,500 PCM



coopers
est 1986



A MODERN four bedroom semi detached house located in Watford near to the M25 and A41. The property benefits from two SPACIOUS reception rooms, a utility room and the GARAGE has been converted into a GYM. The property has WOODEN FLOORING throughout the whole property.

The kitchen has modern range of fitted wall and base units, gas hob, electric oven, fridge freezer, dishwasher, double glazed doors to garden, door to utility room.

The property has a PRIVATE GARDEN with spacious decking area leading to lawn area with shrubs, plants and borders and also off street parking.

Available in June and offer unfurnished.

Local authority: Watford Borough Council
Council tax: Band F

Semi detached house

Off street parking

Close to Northwood HQ

Private Garden

Stylish kitchen

En-suite

Utility room

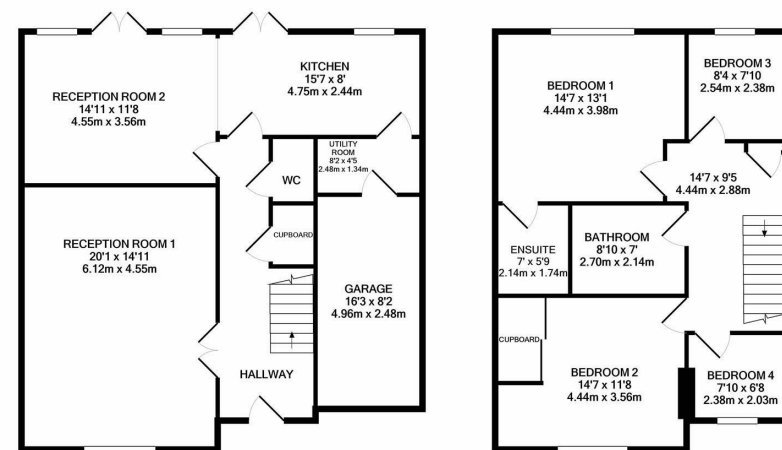
Garage converted to Gym

Unfurnished

Available in November

Available Date

13th June 2025



GROUND FLOOR

1ST FLOOR

Whilst every attempt has been made to ensure the accuracy of the floor plan contained here, measurements of doors, windows, rooms and any other items are approximate and no responsibility is taken for any error, omission, or mis-statement. This plan is for illustrative purposes only and should be used as such by any prospective purchaser. The services, systems and appliances shown have not been tested and no guarantee as to their operability or efficiency can be given.
Made with Metropix ©2022



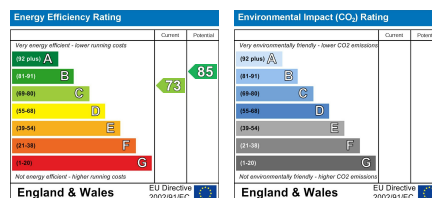
coopers
est 1986

0208 017 6000

**18 Bridge Street, Pinner,
Middlesex, HA5 3JF**

pinner@coopersresidential.co.uk

CoopersResidential.co.uk



Important Notice: These particulars, whilst believed to be accurate are set out as a general outline only for guidance and do not constitute any part of an offer or contract. Intending purchasers should not rely on them as statements or representation of fact, but must satisfy themselves by inspection or otherwise has the authority to make or give any representation or warranty in respect of the property.