

534-536 Whippendell Road

Watford • Hertfordshire • WD18 7QH

PCM: £1,600 PCM



coop
ers
est 1986

GROUND FLOOR
676 sq.ft. (62.8 sq.m.) approx.

A BEAUTIFULLY PRESENTED and WELL LOCATED 2 bedroom, 2 bathroom GROUND floor apartment within CLOSE PROXIMITY of Watford Station (Metropolitan Line) & Watford High Street. This NATURALLY BRIGHT property boasts; entrance hallway, SPACIOUS LOUNGE with OPEN PLAN FITTED KITCHEN, 2 double bedrooms with the master room boasting an EN-SUITE and a family bathroom. Other benefits include; UNDERGROUND PARKING and video phone entry system.

Available in August and offered unfurnished.

Local authority: Watford Borough Council
Council tax: Band D

Ground floor apartment

Two bedrooms

17ft living room

Spacious master bedroom

Video phone entry system

En-suite

Underground parking

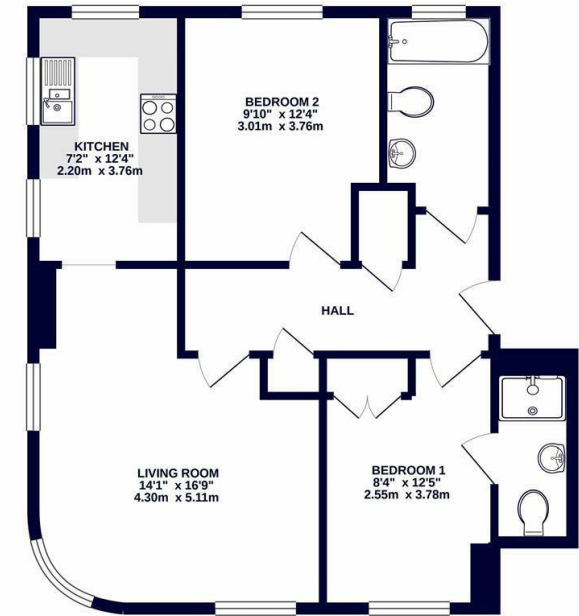
Close to Watford High Street

Unfurnished

Available in August

Available Date

19th August 2024



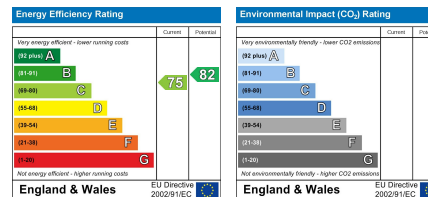
TOTAL FLOOR AREA: 676 sq.ft. (62.8 sq.m.) approx.
While every attempt has been made to ensure the accuracy of the floorplan contained here, measurements of doors, windows, rooms and any other items are approximate and no responsibility is taken for any error, omission or mis-statement. This plan is for illustrative purposes only and should be used as such by any prospective purchaser. The services, systems and appliances shown have not been tested and no guarantee as to their operability or availability can be given.
Made with Metropac ©2023



0208 017 6000

**18 Bridge Street, Pinner,
Middlesex, HA5 3JF**
pinner@coopersresidential.co.uk

CoopersResidential.co.uk



Important Notice: These particulars, whilst believed to be accurate are set out as a general outline only for guidance and do not constitute any part of an offer or contract. Intending purchasers should not rely on them as statements or representation of fact, but must satisfy themselves by inspection or otherwise has the authority to make or give any representation or warranty in respect of the property.

coopers
est 1986