

# East Croft House

Harrow • Middlesex • HA2 0ER

PCM: £1,850 PCM



coopers  
est 1986



This SPACIOUS second floor, two bedroom apartment is located in the HEART of Harrow. The property is within very convenient access to a selection of transport links with tube and bus services to Central London, Harrow on the Hill and Heathrow, as well as a selection of local shops and amenities including a Waitrose supermarket.

The nicely-presented and well-proportioned accommodation briefly comprises; secure communal entrance, lift and stairs to second floor, entrance hall with large storage cupboard and combination boiler, bathroom/W.C. with white three-piece suite, master bedroom with two full-length feature windows, space for double bed and has fitted wardrobes in master bedroom, bedroom two with space for double bed and wardrobe, a large reception room incorporating a defined kitchen area with attractive high-gloss units and white goods, living area with high-speed broadband connection and French doors leading to private balcony as well as a dining area with plenty of space for a family sized table and

Second floor apartment

Two spacious bedrooms

Contemporary fitted kitchen

24ft living room

Balcony

Lift access

Tiled family bathroom

Walking distance to station

Unfurnished

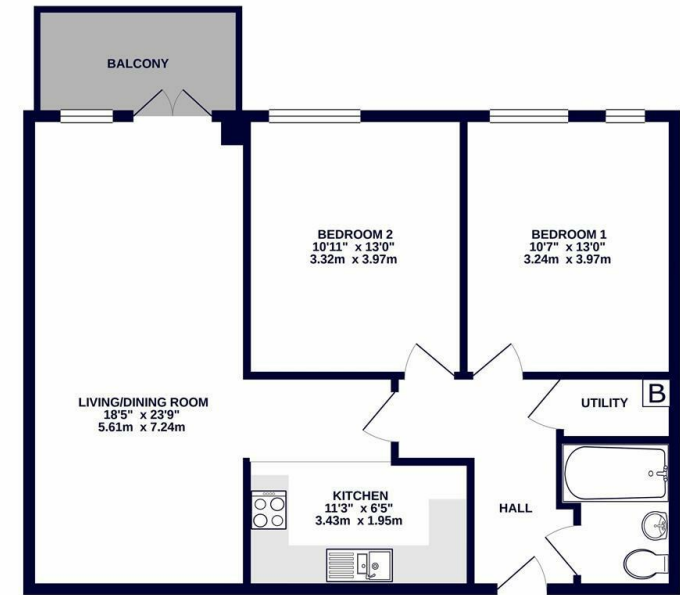
Available in July

**Available Date**

20th July 2024



2ND FLOOR  
770 sq.ft. (71.5 sq.m.) approx.



TOTAL FLOOR AREA: 770 sq.ft. (71.5 sq.m.) approx.  
Whilst every attempt has been made to ensure the accuracy of the floorplans contained here, measurements of doors, windows, rooms and any other feature are approximate and not responsible to scale for any error, omission or misstatement. This plan is for illustrative purposes only and should be used as such by any prospective purchaser. The services, systems and appliances shown here have not been tested and no guarantee as to their operability or efficiency can be given.  
Made with Metrage 10/22



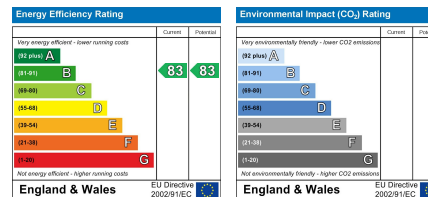
**coopers**  
est 1986

**0208 017 6000**

**18 Bridge Street, Pinner,  
Middlesex, HA5 3JF**

[pinner@coopersresidential.co.uk](mailto:pinner@coopersresidential.co.uk)

**CoopersResidential.co.uk**



Important Notice: These particulars, whilst believed to be accurate are set out as a general outline only for guidance and do not constitute any part of an offer or contract. Intending purchasers should not rely on them as statements or representation of fact, but must satisfy themselves by inspection or otherwise has the authority to make or give any representation or warranty in respect of the property.