

Harpers Heath

Hatfield

A collection of traditionally inspired
2, 3 & 4 bedroom homes in Hatfield



Located on the outskirts of Doncaster, the self-contained town of Hatfield is home to the Harpers Heath development – a fabulous collection of traditionally inspired two, three and four-bedroom homes. This wonderful 211 home development is an opportunity to experience the perfect blend of traditional architectural styling with all the benefits of a brand new property.

Hatfield itself boasts a range of on the doorstep facilities including an abundance of restaurants and cafes, its own library and post office.

The Hatfield Outdoor Activity Centre is a fantastic facility for outdoor enthusiasts and novices alike, offering a whole host of water sports and land-based activities including canoeing, kayaking, sailing & climbing, as well as a 49-pitch camping & caravan site.

Just eight miles from Hatfield by car you'll find the vibrant town of Doncaster, with its bustling nightlife, excellent choice of entertainment, eating out and shopping opportunities – as well as the famous Doncaster Racecourse.

Doncaster's history includes its impressive Minster with tall tower, stained-glass windows, Schulze organ, plus a Roman wall on its grounds. Nearby, Doncaster Market has hundreds of indoor and outdoor stands and stalls, including the Corn Exchange, a grand Victorian shopping centre and Doncaster Museum and Art Gallery.

For those looking to travel a little further afield, you'll find the beautiful market town of Bawtry around 20 minutes away to the south and Sheffield 40 minutes to the west via the M18.

Harpers Heath

Doncaster Road, Hatfield, DN7 6AT

A collection of 2, 3 & 4 bedroom homes

01302 517901


Linden
HOMES

Harpers Heath

Hatfield

Around the neighbourhood



Harpers Heath

Doncaster Road, Hatfield, DN7 6AT

A collection of 2, 3 & 4 bedroom homes

01302 517901





- The Harcourt 2 bedroom
Homes 6, 7, 75-78
 - The Eveleigh 3 bedroom
Homes 2, 3, 8, 9, 14, 15, 30-33, 38, 79, 206, 207, 210
 - The Mountford 3 bedroom
Homes 37, 80, 211
 - The Goodridge 4 bedroom
Homes 1, 5, 16, 21, 23, 34, 36, 68, 73, 204
 - The Aslin 4 bedroom
Homes 69, 70, 208, 209,
 - The Mylne 4 bedroom
Homes 4, 18, 19, 22, 35, 72, 74, 205
 - The Grainger 4 bedroom
Homes 17, 20, 24, 71
 - The Pembroke 4 bedroom
Homes 25, 67
- * Affordable housing

Harpers Heath
Doncaster Road, Hatfield, DN7 6AT

A collection of 2, 3 & 4 bedroom homes

01302 517901

Please note that boundary and legal plan details may vary from those shown on this plan. Not to Scale. Trees and landscaping are indicative only and may alter during construction. The trees, shrubs and gardens shown are illustrative only. Finishes and materials may vary from those shown here. Please ask your Sales Executive for specific details. 16-01-2019.



Harpers Heath

Hatfield

The Harcourt

2 bedroom home



Harpers Heath

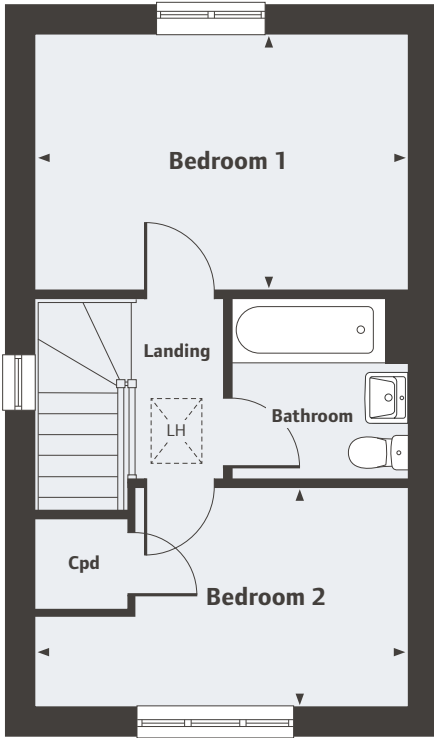
Doncaster Road, Hatfield, DN7 6AT

A collection of 2, 3 & 4 bedroom homes



Harpers Heath
Hatfield

The Harcourt
2 bedroom home



First Floor

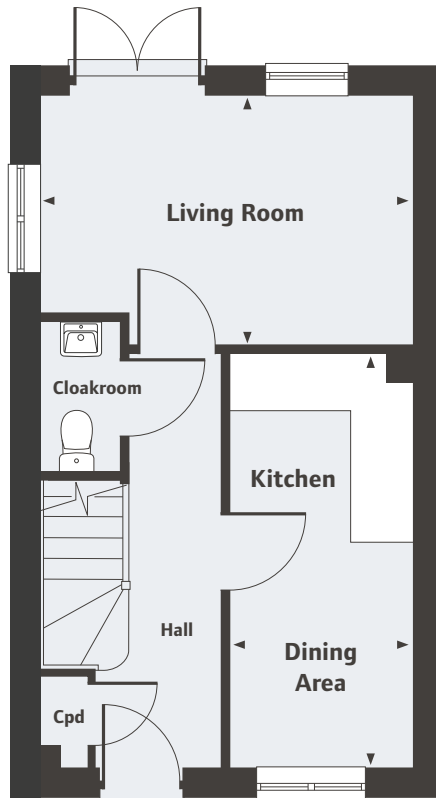
Bedroom 1	4.08m x 2.83m	13'4" x 9'3"
Bedroom 2	4.08m x 2.40m	13'4" x 7'10"

LH Loft Hatch

Ground Floor

Living Room	4.08m x 2.74m	13'4" x 8'11"
Kitchen/Dining Area	4.56m x 1.99m	14'11" x 6'6"

*Plot specific window, please ask your Sales Executive for details.



For all sales enquiries please call
01302 517901
lindenhomes.co.uk/harpersheath

Please note, floor plans and dimensions are taken from architectural drawings and are for guidance only. Dimensions stated are within a tolerance of plus or minus 50mm. Overall dimensions are usually stated and there may be projections into these. With our continual improvement policy we constantly review our designs and specification to ensure we deliver the best product to our customers. Computer generated images not to scale. Finishes and materials may vary and landscaping is illustrative only. Kitchen layouts are indicative only and may change. To confirm specific details on our homes please ask your Sales Executive. V1.


Linden
HOMES

Harpers Heath

Hatfield

The Eveleigh

3 bedroom home



Harpers Heath

Doncaster Road, Hatfield, DN7 6AT

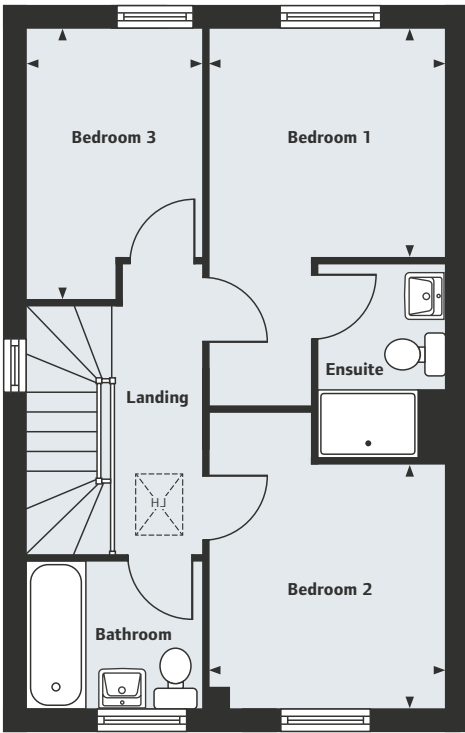
A collection of 2, 3 & 4 bedroom homes



Harpers Heath

Hatfield

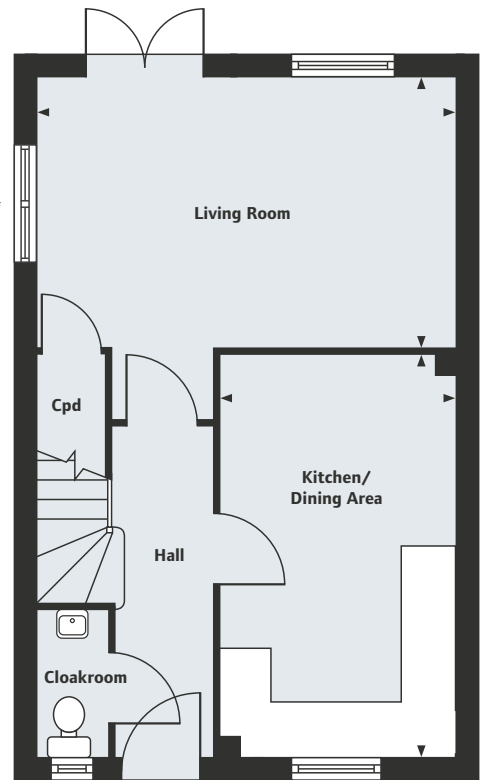
The Eveleigh
3 bedroom home



First Floor

Bedroom 1	2.77m x 2.71m	9'1" x 8'10"
Bedroom 2	2.88m x 2.77m	9'5" x 9'1"
Bedroom 3	3.19m x 2.12m	10'5" x 6'11"

LH Loft Hatch



Ground Floor

Living Room	4.98m x 3.19m	16'4" x 10'5"
Kitchen/Dining Area	4.78m x 2.80m	15'8" x 9'2"

*Plot specific window, please ask your Sales Executive for details.

For all sales enquiries please call
01302 517901
lindenhomes.co.uk/harpersheath

Please note, floor plans and dimensions are taken from architectural drawings and are for guidance only. Dimensions stated are within a tolerance of plus or minus 50mm. Overall dimensions are usually stated and there may be projections into these. With our continual improvement policy we constantly review our designs and specification to ensure we deliver the best product to our customers. Computer generated images not to scale. Finishes and materials may vary and landscaping is illustrative only. Kitchen layouts are indicative only and may change. To confirm specific details on our homes please ask your Sales Executive. V1.


Linden
HOMES

Harpers Heath

Hatfield

The Mountford

3 bedroom home



Harpers Heath

Doncaster Road, Hatfield, DN7 6AT

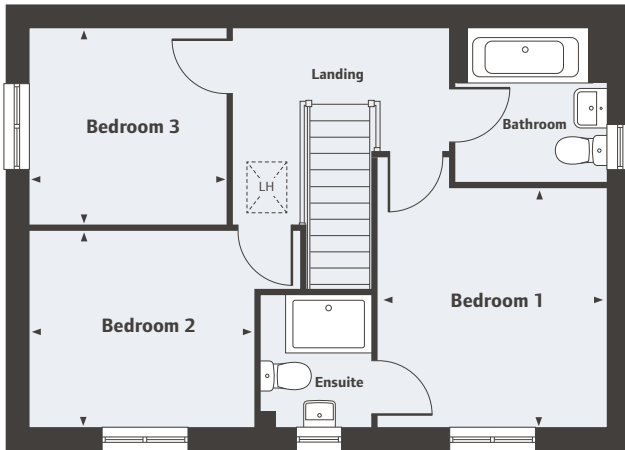
A collection of 2, 3 & 4 bedroom homes


Linden
HOMES

Harpers Heath

Hatfield

The Mountford 3 bedroom home



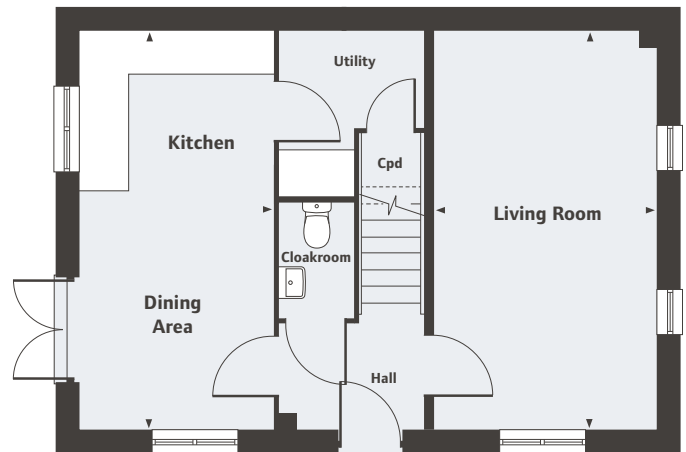
First Floor

Bedroom 1	3.35m x 3.17m	11'0" x 10'5"
Bedroom 2	3.13m x 2.73m	10'3" x 8'11"
Bedroom 3	2.76m x 2.76m	9'0" x 9'0"

LH Loft Hatch

Ground Floor

Living Room	5.59m x 3.11m	18'4" x 10'2"
Kitchen/Dining Area	5.59m x 2.67m	18'4" x 8'9"



For all sales enquiries please call
01302 517901
lindenhomes.co.uk/harpersheath

Please note, floor plans and dimensions are taken from architectural drawings and are for guidance only. Dimensions stated are within a tolerance of plus or minus 50mm. Overall dimensions are usually stated and there may be projections into these. With our continual improvement policy we constantly review our designs and specification to ensure we deliver the best product to our customers. Computer generated images not to scale. Finishes and materials may vary and landscaping is illustrative only. Kitchen layouts are indicative only and may change. To confirm specific details on our homes please ask your Sales Executive. V1.


Linden
HOMES

Harpers Heath

Hatfield

The Goodridge

4 bedroom home



Harpers Heath

Doncaster Road, Hatfield, DN7 6AT

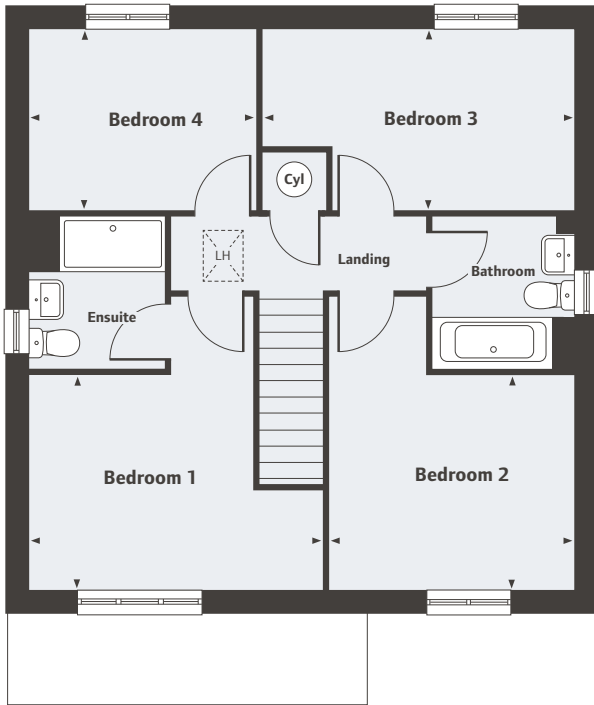
A collection of 2, 3 & 4 bedroom homes


Linden
HOMES

Harpers Heath

Hatfield

The Goodridge 4 bedroom home



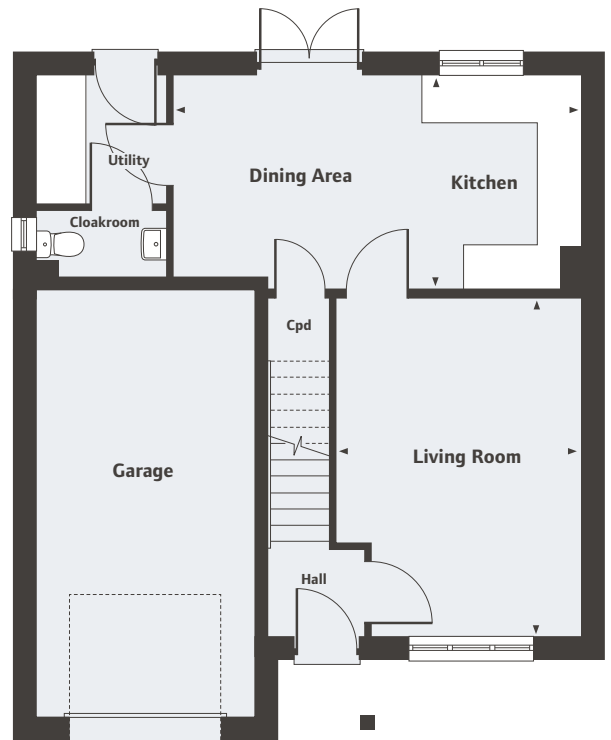
First Floor

Bedroom 1	4.10m x 2.98m	13'5" x 9'9"
Bedroom 2	3.42m x 2.98m	11'2" x 9'9"
Bedroom 3	4.36m x 2.50m	14'3" x 8'2"
Bedroom 4	3.16m x 2.50m	10'4" x 8'2"

LH Loft Hatch

Ground Floor

Living Room	4.73m x 3.42m	15'6" x 11'2"
Kitchen/Dining Area	5.72m x 2.96m	18'9" x 9'8"



For all sales enquiries please call
01302 517901
lindenhomes.co.uk/harpersheath

Please note, floor plans and dimensions are taken from architectural drawings and are for guidance only. Dimensions stated are within a tolerance of plus or minus 50mm. Overall dimensions are usually stated and there may be projections into these. With our continual improvement policy we constantly review our designs and specification to ensure we deliver the best product to our customers. Computer generated images not to scale. Finishes and materials may vary and landscaping is illustrative only. Kitchen layouts are indicative only and may change. To confirm specific details on our homes please ask your Sales Executive. V1.

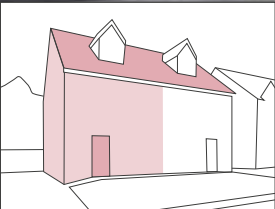

Linden
HOMES

Harpers Heath

Hatfield

The Aslin

4 bedroom home



Harpers Heath

Doncaster Road, Hatfield, DN7 6AT

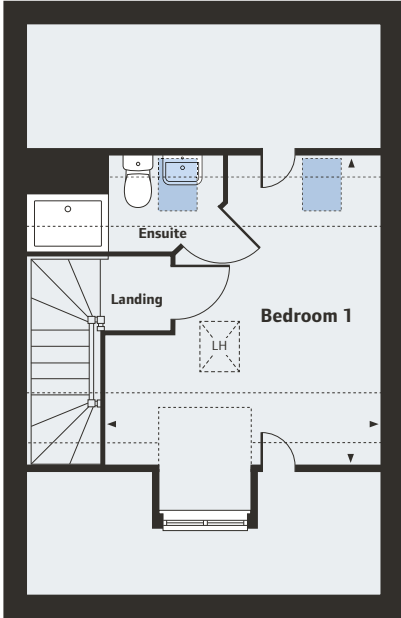
A collection of 2, 3 & 4 bedroom homes


Linden
HOMES

Harpers Heath

Hatfield

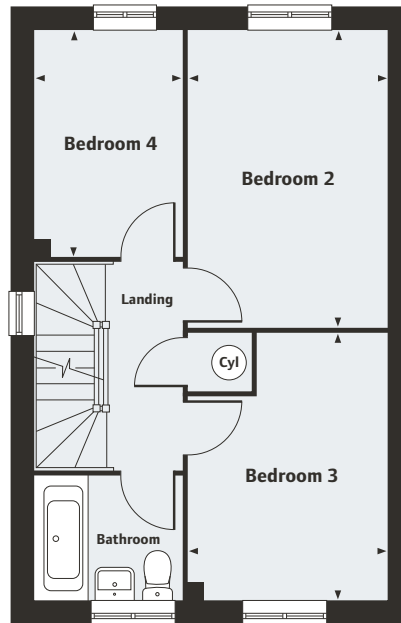
The Aslin
4 bedroom home



Second Floor

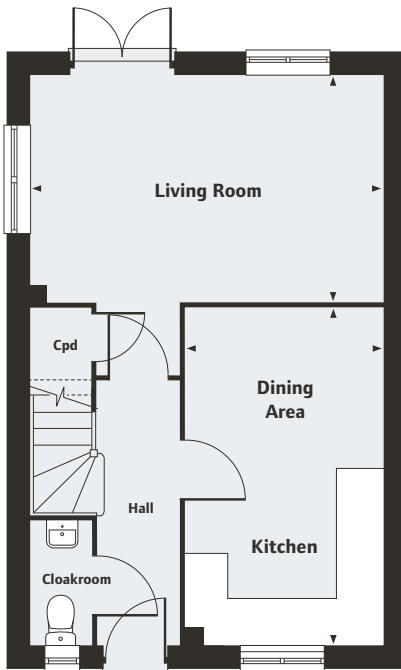
Bedroom 1
4.42m x 3.85m 14'6" x 12'7"

- LH Loft hatch
- Velux window location



First Floor

Bedroom 2
4.19m x 2.79m 13'9" x 9'2"
Bedroom 3
3.78m x 2.79m 12'4" x 9'2"
Bedroom 4
3.19m x 2.10m 10'5" x 6'10"



Ground Floor

Living Room
4.98m x 3.19m 16'4" x 10'5"
Kitchen/Dining Area
4.78m x 2.80m 15'8" x 9'2"

*Plot specific window, please ask your Sales Executive for details.

For all sales enquiries please call
01302 517901
lindenhomes.co.uk/harpersheath

Please note, floor plans and dimensions are taken from architectural drawings and are for guidance only. Dimensions stated are within a tolerance of plus or minus 50mm. Overall dimensions are usually stated and there may be projections into these. With our continual improvement policy we constantly review our designs and specification to ensure we deliver the best product to our customers. Computer generated images not to scale. Finishes and materials may vary and landscaping is illustrative only. Kitchen layouts are indicative only and may change. To confirm specific details on our homes please ask your Sales Executive. V1.



Harpers Heath

Hatfield

The Mylne

4 bedroom home



Harpers Heath

Doncaster Road, Hatfield, DN7 6AT

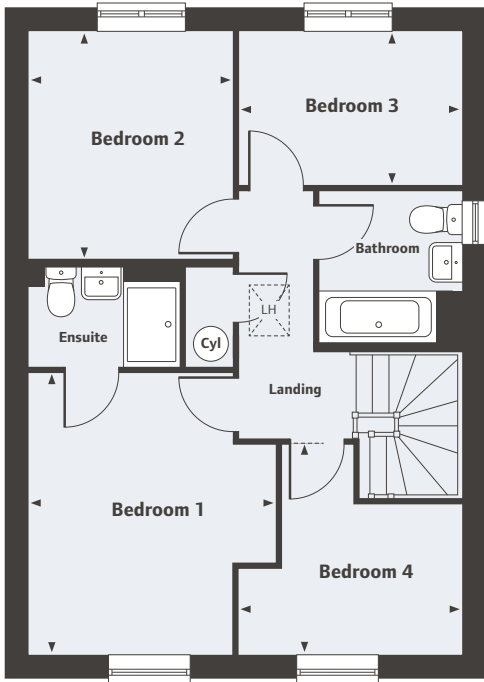
A collection of 2, 3 & 4 bedroom homes


Linden
HOMES

Harpers Heath

Hatfield

The Mylne 4 bedroom home



First Floor

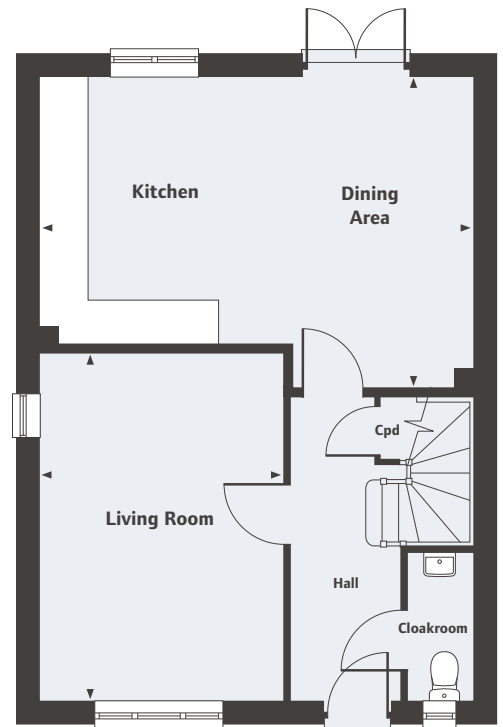
Bedroom 1	3.95m x 3.46m	12'11" x 11'4"
Bedroom 2	3.20m x 2.86m	10'6" x 9'4"
Bedroom 3	3.10m x 2.16m	10'2" x 7'1"
Bedroom 4	3.10m x 2.92m	10'2" x 9'7"

LH Loft Hatch

Ground Floor

Living Room	4.83m x 3.39m	15'10" x 11'1"
Kitchen/Dining Area	6.04m x 4.37m	19'9" x 14'4"

*Plot specific window, please ask your Sales Executive for details.



For all sales enquiries please call
01302 517901
lindenhomes.co.uk/harpersheath

Please note, floor plans and dimensions are taken from architectural drawings and are for guidance only. Dimensions stated are within a tolerance of plus or minus 50mm. Overall dimensions are usually stated and there may be projections into these. With our continual improvement policy we constantly review our designs and specification to ensure we deliver the best product to our customers. Computer generated images not to scale. Finishes and materials may vary and landscaping is illustrative only. Kitchen layouts are indicative only and may change. To confirm specific details on our homes please ask your Sales Executive. V1.



Harpers Heath

Hatfield

The Grainger

4 bedroom home



Harpers Heath

Doncaster Road, Hatfield, DN7 6AT

A collection of 2, 3 & 4 bedroom homes

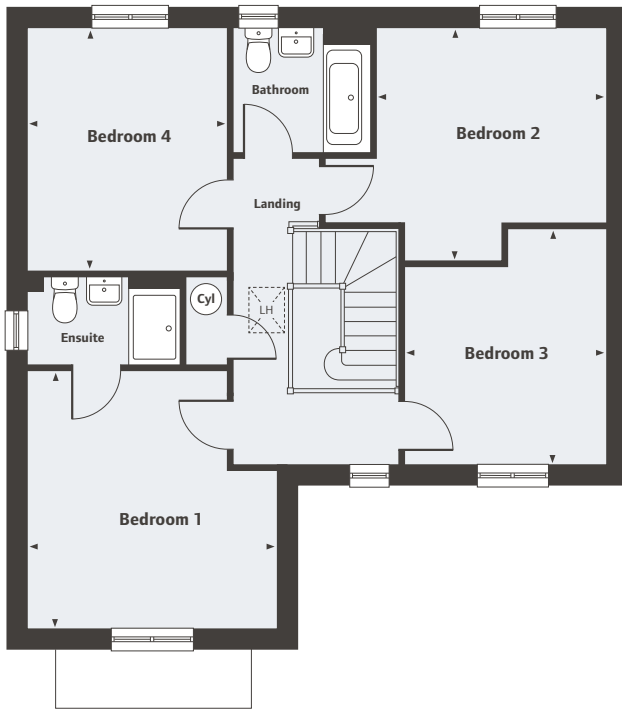

Linden
HOMES

Harpers Heath

Hatfield

The Grainger

4 bedroom home



First Floor

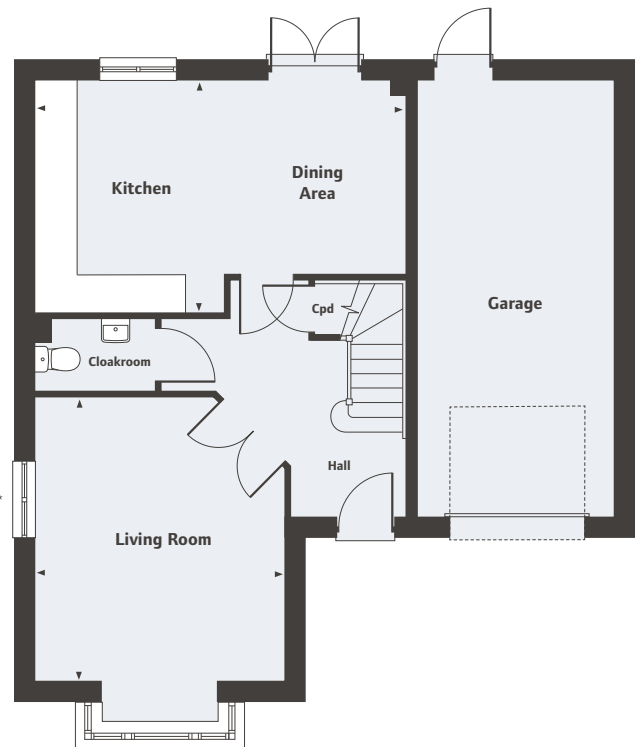
Bedroom 1	4.01m x 3.90m	13'2" x 12'9"
Bedroom 2	3.70m x 3.58m	12'1" x 11'9"
Bedroom 3	3.65m x 3.17m	11'11" x 10'5"
Bedroom 4	3.79m x 3.11m	12'5" x 10'2"

LH Loft Hatch

Ground Floor

Living Room	4.39m x 3.90m	14'4" x 12'9"
Kitchen/Dining Room	5.81m x 3.62m	19'0" x 11'10"

*Plot specific window, please ask your Sales Executive for details.



For all sales enquiries please call
01302 517901
lindenhomes.co.uk/harpersheath

Please note, floor plans and dimensions are taken from architectural drawings and are for guidance only. Dimensions stated are within a tolerance of plus or minus 50mm. Overall dimensions are usually stated and there may be projections into these. With our continual improvement policy we constantly review our designs and specification to ensure we deliver the best product to our customers. Computer generated images not to scale. Finishes and materials may vary and landscaping is illustrative only. Kitchen layouts are indicative only and may change. To confirm specific details on our homes please ask your Sales Executive. V1.


Linden
HOMES

Harpers Heath

Hatfield

The Pembroke

4 bedroom home



Harpers Heath

Doncaster Road, Hatfield, DN7 6AT

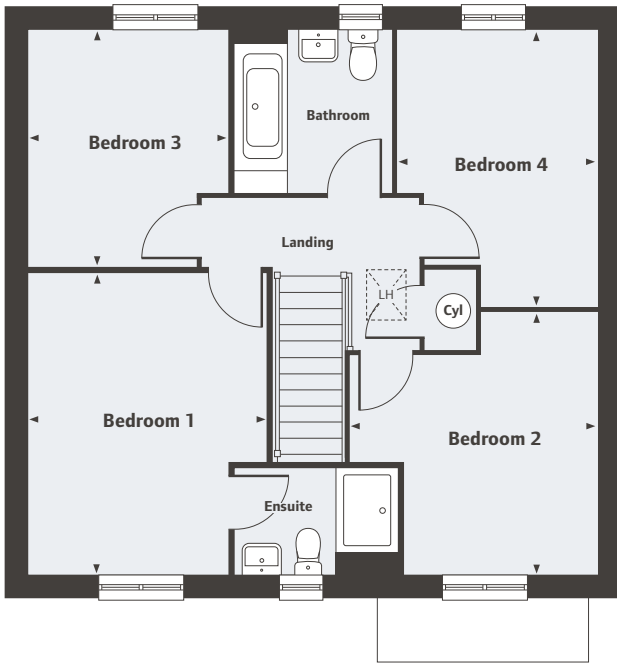
A collection of 2, 3 & 4 bedroom homes


Linden
HOMES

Harpers Heath

Hatfield

The Pembroke 4 bedroom home



First Floor

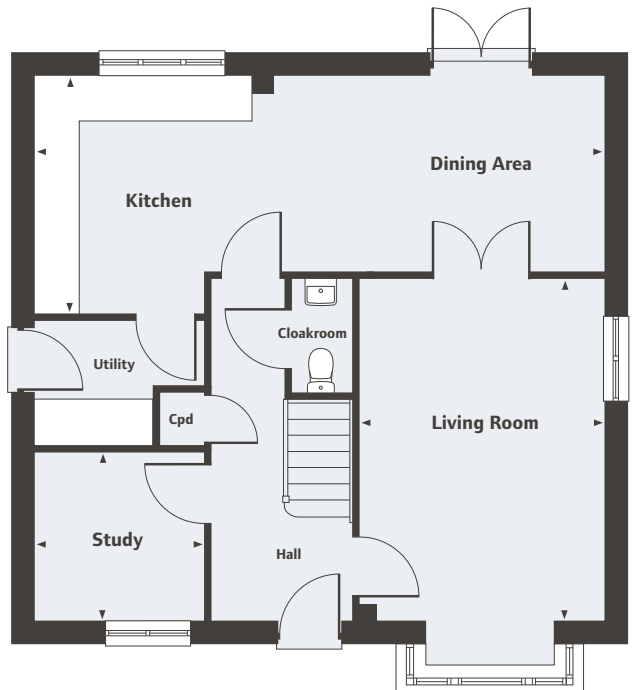
Bedroom 1	4.29m x 3.38m	14'1" x 11'1"
Bedroom 2	3.71m x 3.48m	12'2" x 11'5"
Bedroom 3	3.34m x 2.86m	10'11" x 9'4"
Bedroom 4	3.92m x 2.82	12'10" x 9'3"

LH Loft Hatch

Ground Floor

Living Room	4.83m x 3.48m	15'10" x 11'5"
Kitchen/Dining Area	8.06m x 3.34m	26'5" x 10'11"
Study	2.40m x 2.35m	7'10" x 7'8"

*Plot specific window, please ask your Sales Executive for details.



For all sales enquiries please call
01302 517901
lindenhomes.co.uk/harpersheath

Please note, floor plans and dimensions are taken from architectural drawings and are for guidance only. Dimensions stated are within a tolerance of plus or minus 50mm. Overall dimensions are usually stated and there may be projections into these. With our continual improvement policy we constantly review our designs and specification to ensure we deliver the best product to our customers. Computer generated images not to scale. Finishes and materials may vary and landscaping is illustrative only. Kitchen layouts are indicative only and may change. To confirm specific details on our homes please ask your Sales Executive. V1.


Linden
HOMES



	2 bedroom homes	3 bedroom homes	4 bedroom semi-detached homes	4 bedroom detached homes
Kitchen				
Fitted kitchen with laminate worktop and upstand	•	•	•	•
Single oven	•	•		
Double Oven			•	•
Chimney hood				•
Integrated pull open hood	•	•	•	
4 burner gas hob	•	•	•	•
Stainless steel splashback to hob	•	•	•	•
Integrated fridge freezer				•
Space for washer and or dryer with plumbing and electrical supply	•	•	•	•
1 1/2 stainless steel sink with monobloc mixer tap			•	•
Single stainless steel sink with monobloc mixer tap	•	•		
Track lighting to kitchen	•	•	•	•
Bathroom, Ensuite & Cloakroom				
Contemporary white sanitaryware and chrome fittings	•	•	•	•
Electrical				
TV & Telephone point, refer to Sales Executive	•	•	•	•
Pendant fittings to other rooms including low energy fittings	•	•	•	•
White plastic switchplates and sockets	•	•	•	•
Smoke alarm and Carbon monoxide alarm	•	•	•	•
Other				
Walls in White matt emulsion	•	•	•	•
Ceilings - flush smooth in white emulsion	•	•	•	•
Internal woodwork in gloss white	•	•	•	•
White vertical panel doors with chrome ironmongery	•	•	•	•
Softwood white painted staircase	•	•	•	•
Gas fired boiler	•	•	•	•
External door with multipoint locking system and door bell	•	•	•	•
Low energy external light to front door	•	•	•	•
Garages				
Lighting and power supply if within curtilage		•	•	•
NHBC				
10 year NHBC warranty	•	•	•	•