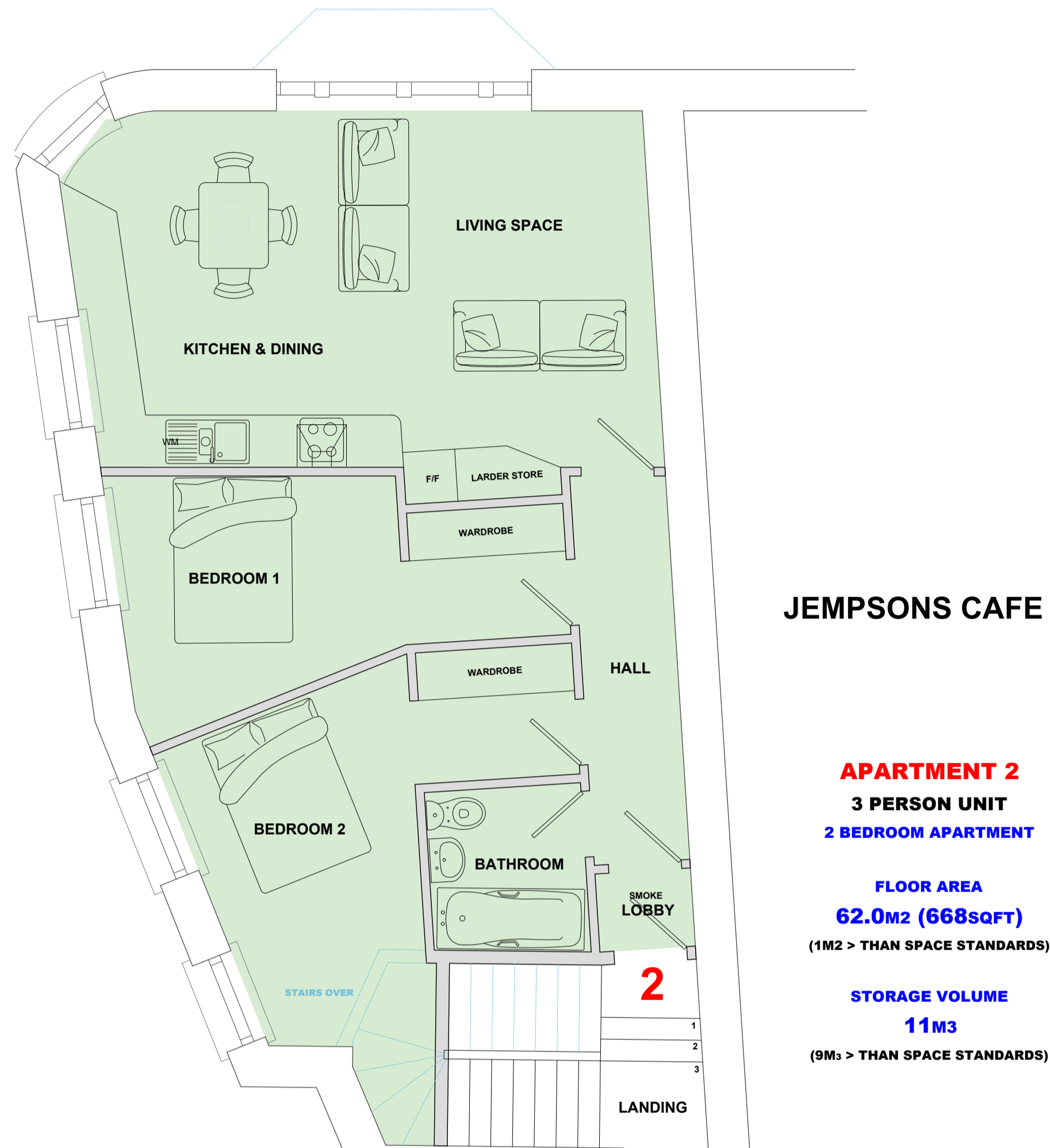


PROPOSED FIRST FLOOR

PROPOSED SECOND FLOOR

PROPOSED THIRD FLOOR

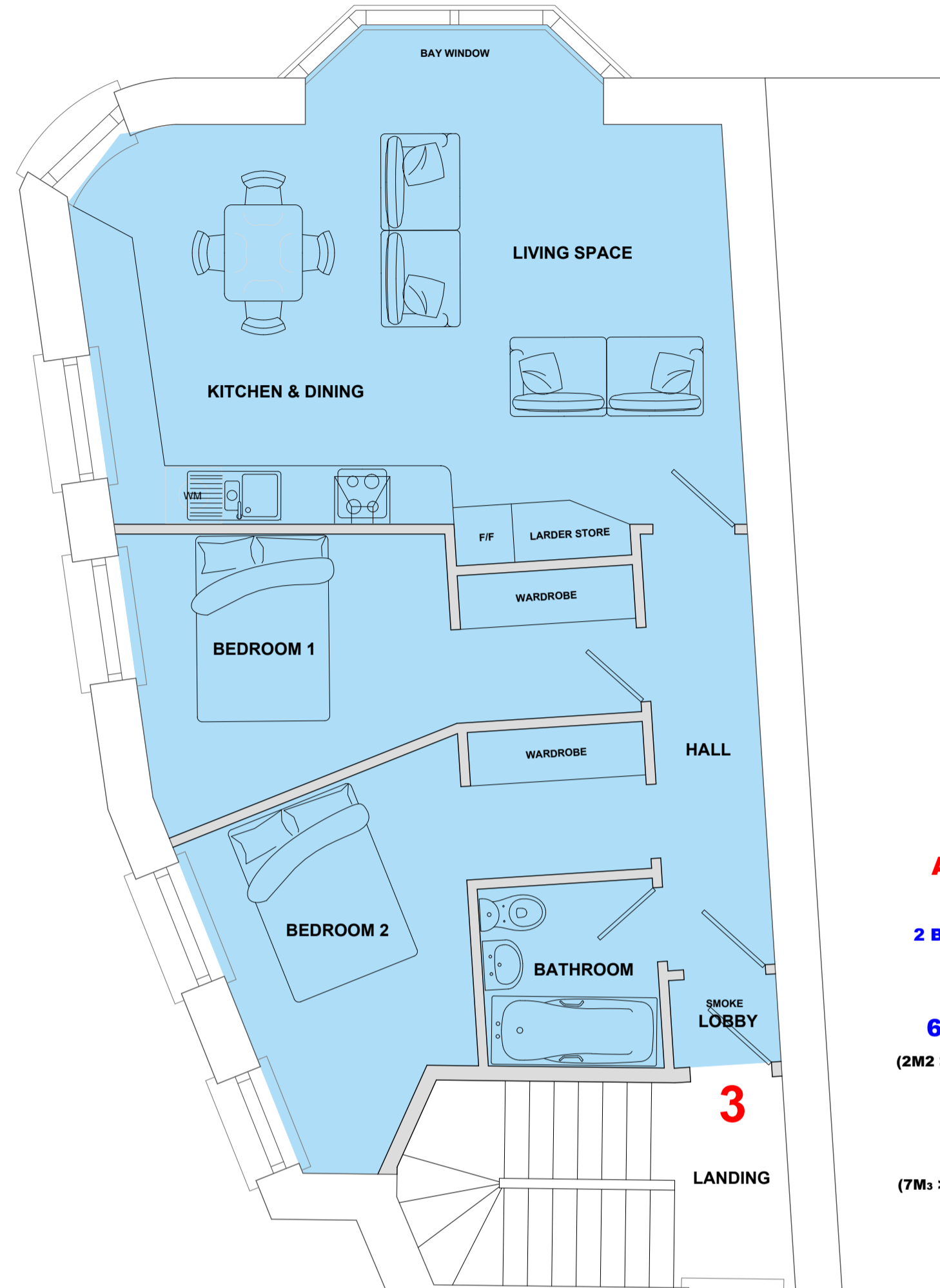


JEMPSONS CAFE

APARTMENT 2
3 PERSON UNIT
2 BEDROOM APARTMENT

FLOOR AREA
62.0m² (668sqft)
(1M² > THAN SPACE STANDARDS)

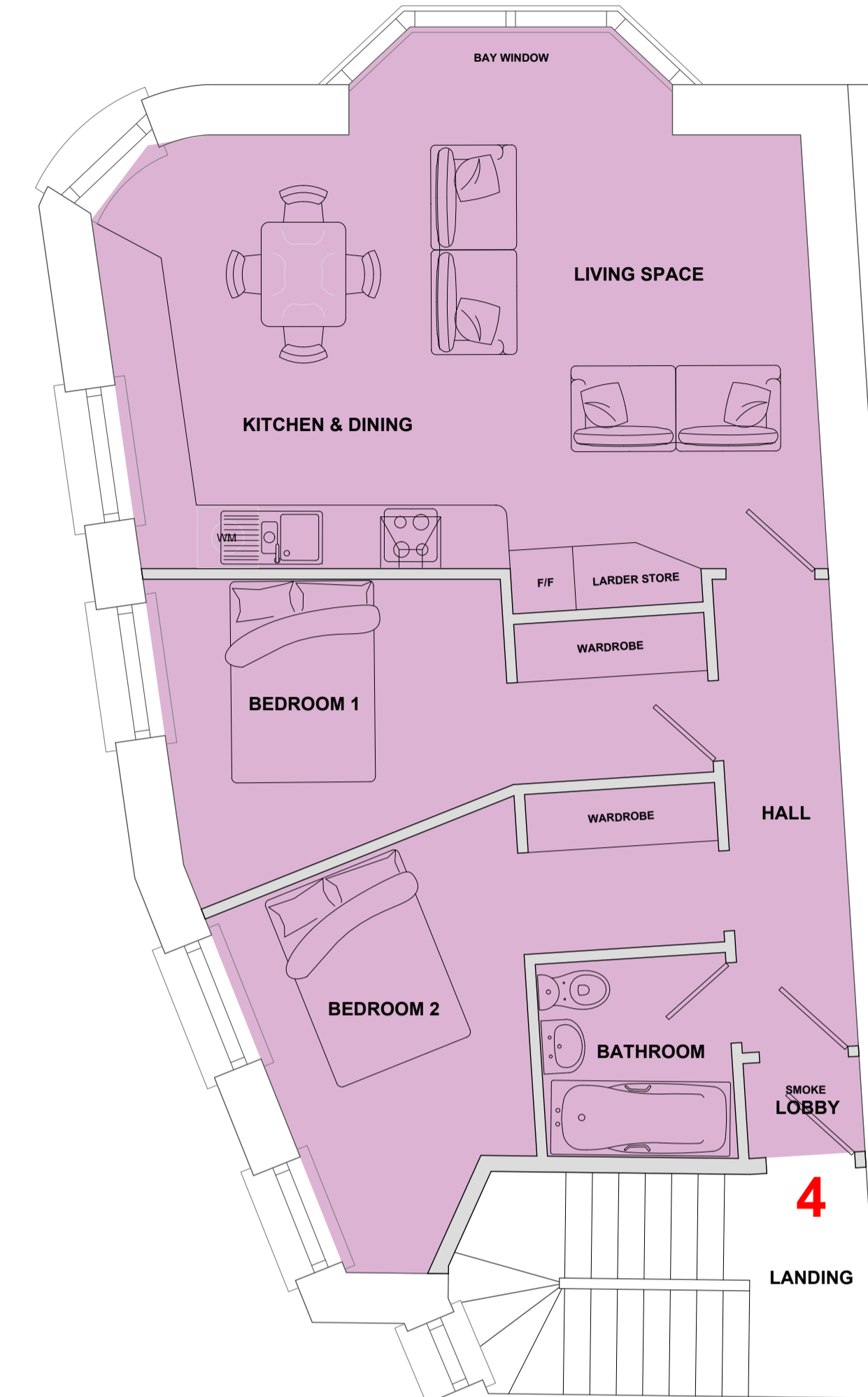
STORAGE VOLUME
11M³
(9M³ > THAN SPACE STANDARDS)



APARTMENT 3
3 PERSON UNIT
2 BEDROOM APARTMENT

FLOOR AREA
63.0m² (678sqft)
(2M² > THAN SPACE STANDARDS)

STORAGE VOLUME
9M³
(7M³ > THAN SPACE STANDARDS)



APARTMENT 4
3 PERSON UNIT
2 BEDROOM APARTMENT

FLOOR AREA
63.0m² (678sqft)
(2M² > THAN SPACE STANDARDS)

STORAGE VOLUME
5M³
(3M³ > THAN SPACE STANDARDS)

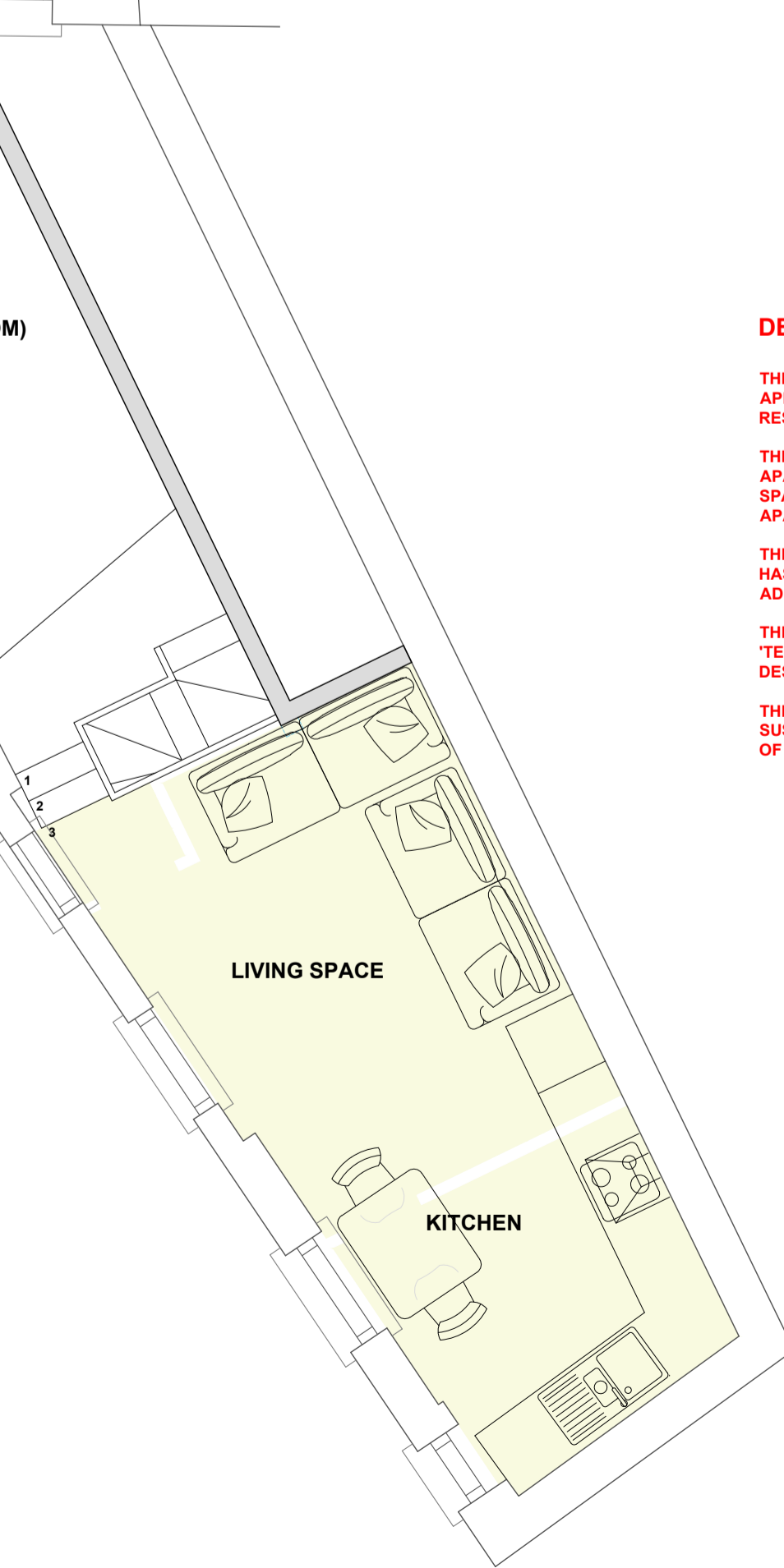


APARTMENT 1
1 PERSON UNIT
1 BEDROOM APARTMENT

FLOOR AREA
42.0m² (452sqft)
(3M² > THAN SPACE STANDARDS)

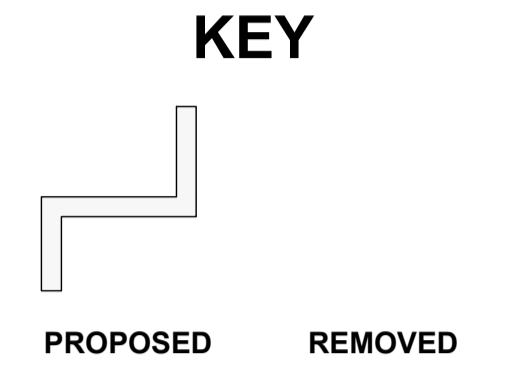
STORAGE VOLUME
10M³
(9M³ > THAN SPACE STANDARDS)

STORAGE
(OVER BEDROOM)



LIVING SPACE

KITCHEN



CHECK ALL DIMENSIONS AND LEVELS ON SITE PRIOR TO COMMENCEMENT OF ANY WORK
DO NOT SCALE ANY DIMENSIONS
IF ANY DOUBT - SEEK CLARIFICATION

REVISIONS
A REVISION

PROPOSED
CONVERSION OF UPPER FLOORS
INTO 4 APARTMENTS
18-21 WELLINGTON PLACE
HASTINGS EAST SUSSEX, TN34 1NY
FOR MR. DENNISON

PLANS

JULY 2022
SCALE - 1:50

DRAWING NUMBER
SD/805/03
PRODUCED @ A1

STEVE DERHUN
DESIGN & BUILD

07952 798382
1 CROWN STUDIO, 1 CROWN LANE,
HASTINGS, EAST SUSSEX, TN34 3DJ
stevederhun@gmail.com

DESIGN & ACCESS STATEMENT

THIS PROPOSAL IS A VARIATION OF PLANNING APPROVAL HS/FA/19/00312 FOR 3 X 1 BEDROOM RESIDENTIAL APARTMENTS.

THIS PROPOSAL PROVIDES 4 RESIDENTIAL APARTMENTS BY RECONFIGURING THE INTERNAL SPACE/VOLUME THUS PROVIDING 3 X 2 BEDROOM APARTMENTS AND 1 X 1 BEDROOM APARTMENT

THE USE OF THE EXISTING ACCESS AND STAIRWELL HAS BEEN RECONFIGURED TO PROVIDE THE ADDITIONAL 1 BEDROOM APARTMENT

THE AREAS AND VOLUMES CREATED EXCEED THE 'TECHNICAL HOUSING STANDARDS - NATIONALLY DESCRIBED SPACE STANDARD'

THE PROPOSED DEVELOPMENT HAS BECOME MORE SUSTAINABLE AND OF BENEFIT TO THE HOUSING NEEDS OF THE TOWN

SCOPE OF WORKS

TO CONVERT UPPER FLOORS INTO RESIDENTIAL PROVIDING A MIXED TENURE OF 4 RESIDENTIAL APARTMENTS 1 & 2 BEDROOM UNITS

SITE WASTE MANAGEMENT STATEMENT

THE NEW MATERIALS USED IN THE PROJECT WILL BE SOURCED LOCALLY WITH AN EMPHASIS PUT ON RECYCLING OF ANY PACKAGING THE DISPOSAL OF ANY WASTE MATERIALS TO BE CARRIED OUT BY AN APPROVED CONTRACTOR

