

Imperial Drive

Harrow • • HA2 7HW

Asking Price: £875,000



coopers
est 1986

Imperial Drive

Harrow • • HA2 7HW

This five bedroom three bath semi detached house is located on Imperial Drive, Harrow. The property offers generously sized rooms and has the potential to extend, making it an excellent investment opportunity. The interior boasts a spacious living area, a well-equipped kitchen, and a bright and airy dining room. Outside, the property benefits from a large driveway, providing off-street parking. The location is perfect for commuters being situated within close proximity to both North Harrow and Rayner's Lane stations. This property represents a fantastic opportunity to acquire a spacious and versatile family home in a good location.

Semi Detached House

Five Bedroom

Three Bathroom

Private Garden

Large Driveway

Storage Throughout

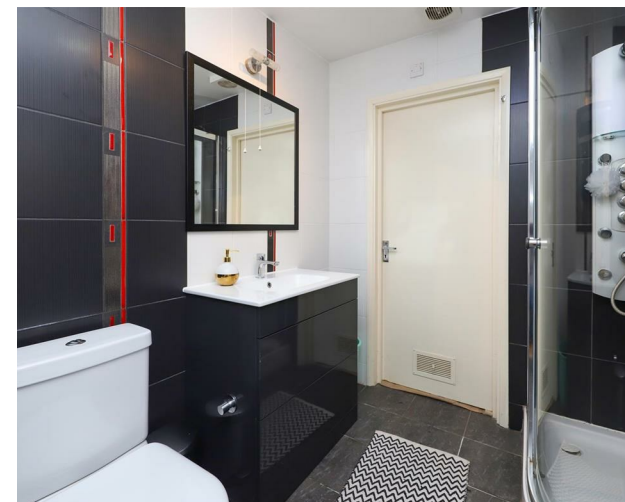
Large Dining Area

Modern Kitchen

Modern Master Bedroom

Approx. 1899 sq.ft

These particulars are intended as a guide and must not be relied upon as statements of fact. Your attention is drawn to the Important Notice on the last page.





Description

The ground floor comprises of a porch way for storage, a ground floor bedroom and a living room with beautiful bay windows, an all important downstairs WC as well as a family room and dining room, also including an important modern kitchen. Entering up onto the first floor you'll find three large bedrooms, all of which has storage within and a family bathroom. Going up to the second floor you'll be pleasantly surprised with a large master bedroom with a on-suite and lots of storage.

Outside

To the front sits a large driveway for off street parking. At the rear you'll a large garden that is very lovingly kept and predominantly laid to lawn along with an array of shrubbery along the edges, with a shed perfect for storage.

Loaction

This property on Imperial Drive is located in the heart of North Harrow, which means it is only a short walk away from local amenities and local train station, makes it a ideal location for commuters.





Schools:

North Harrow Station 0.4 miles
Rayner's Lane Station 0.4 miles
West Harrow Station 0.6 miles



Train:

Longfield Primary School 0.1 miles
Buckingham Preparatory School 0.2 miles
St John Fisher Catholic Primary School 0.6 miles
Nower Hill High School 0.8 miles



Car:

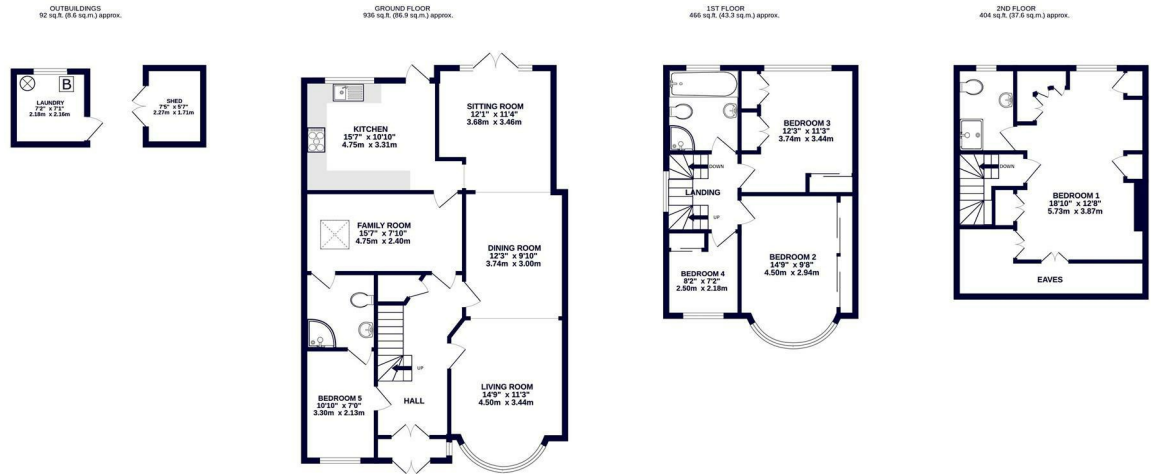
M4, A40, M25, M40



Council Tax Band:

E

(Distances are straight line measurements from centre of postcode)

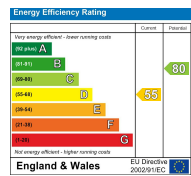


TOTAL FLOOR AREA: 1899 sq.ft. (176.4 sq.m.) approx.
Whilst every attempt has been made to ensure the accuracy of the floorplan contained here, measurements of doors, windows, rooms and any other items are approximate and no responsibility is taken for any error, omission or mis-statement. This plan is for illustrative purposes only and should be used as such by any prospective purchaser. The services, systems and appliances shown have not been tested and no guarantee as to their operability or efficiency can be given.
Made with Metropix ©2024



0208 017 6000
18 Bridge Street, Pinner,
Middlesex, HA5 3JF
pinner@coopersresidential.co.uk

CoopersResidential.co.uk



Important Notice: These particulars, whilst believed to be accurate are set out as a general outline only for guidance and do not constitute any part of an offer or contract. Intending purchasers should not rely on them as statements or representation of fact, but must satisfy themselves by inspection or otherwise has the authority to make or give any representation or warranty in respect of the property.