

# Hargrave Drive

Harrow • • HA1 4GG  
Asking Price: £375,000



coopers  
est 1986

# Hargrave Drive

**Harrow • • HA1 4GG**

A modern two-bedroom, two-bathroom apartment with a private balcony, located in the popular Eastman Village development. The property features a bright reception room, fully fitted kitchen, lift access, secure entry, ample storage and far-reaching views. Residents benefit from an on-site gym and nearby Sainsbury's and Asda Express. Ideally located close to shops, restaurants and excellent transport links, including Harrow & Wealdstone and Harrow-on-the-Hill stations. An ideal purchase for first-time buyers or investors.

Two Bedrooms Apartment

Private Balcony

Two Bathrooms

Eastman Village

Open Plan Living / Kitchen

Close to Local Amenities

Station and Schools Nearby

Excellent Condition

Fitted Wardrobes

Approx Area: 802 sq ft

These particulars are intended as a guide and must not be relied upon as statements of fact. Your attention is drawn to the Important Notice on the last page.



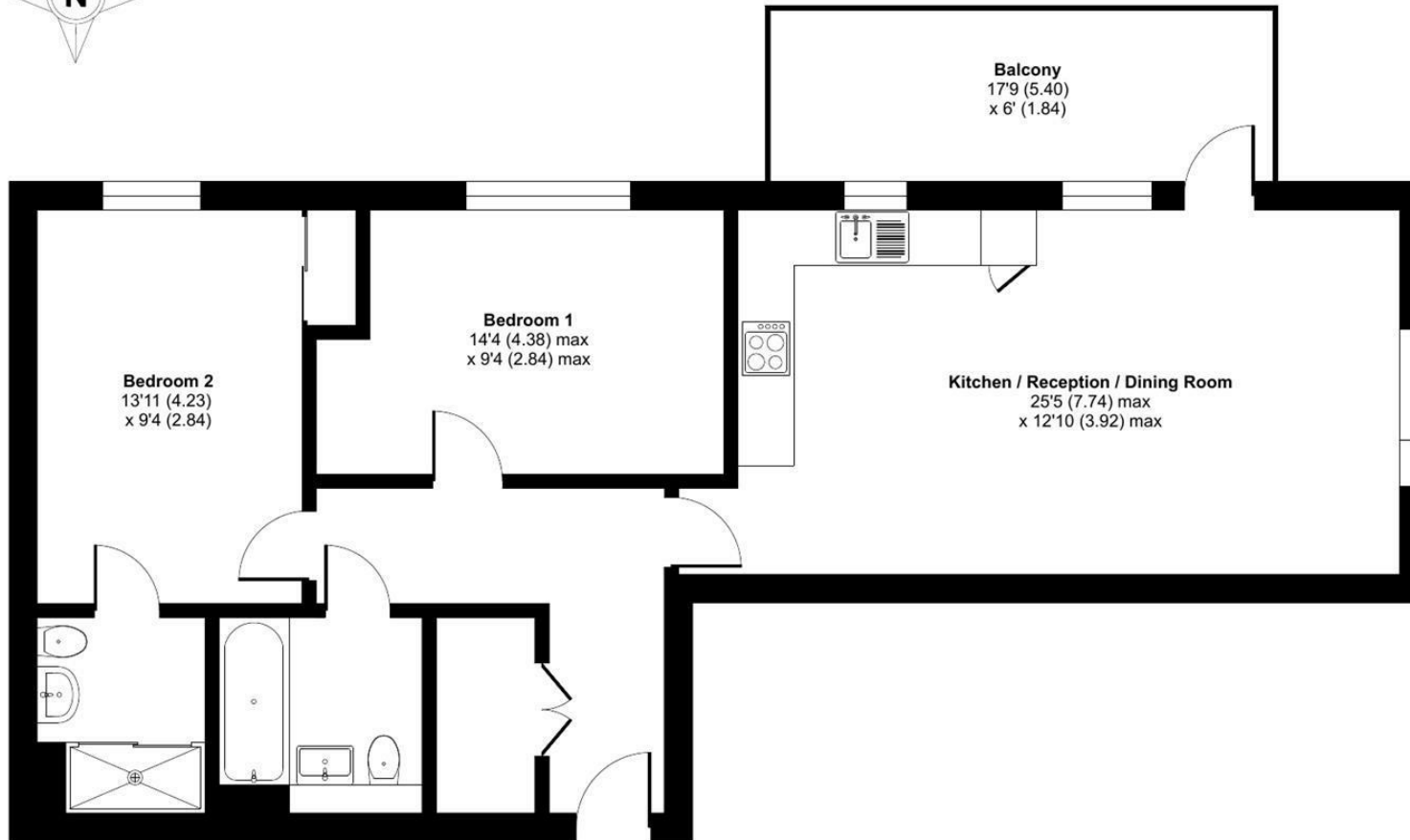




# Hargrave Drive, Harrow, HA1

Approximate Area = 802 sq ft / 74.5 sq m

For identification only - Not to scale



SECOND FLOOR



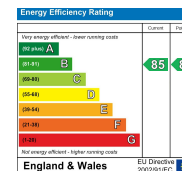
Floor plan produced in accordance with RICS Property Measurement 2nd Edition, Incorporating International Property Measurement Standards (IPMS2 Residential). © nchecom 2026. Produced for Coopers. REF: 1406149

**coopers**  
est 1986

**coopers**  
est 1986

18 Bridge Street, Pinner,  
Middlesex, HA5 3JF  
pinner@coopersresidential.co.uk

**CoopersResidential.co.uk**



Important Notice: These particulars, whilst believed to be accurate are set out as a general outline only for guidance and do not constitute any part of an offer or contract. Intending purchasers should not rely on them as statements or representation of fact, but must satisfy themselves by inspection or otherwise has the authority to make or give any representation or warranty in respect of the property.