

Moss Close

Pinner • • HA5 3AY
Asking Price: £1,200,000



coopers
est 1986

Moss Close

Pinner • • HA5 3AY

This extended, detached three double bedroom home is located on the highly sought-after Moss Close—one of Pinner Village's premier residential lanes. Set within a peaceful location just half a mile from the village centre, the property offers easy access to a wide range of local amenities, including boutique shops, cafés, restaurants, and excellent transport links.

The home beautifully combines period character with contemporary living, offering spacious and thoughtfully updated accommodation throughout. No Onward Chain.

Three Double Bedrooms

Detached Home

Family Bathroom

Open Plan Kitchen / Living Room

Study Room

Private Garden and Garage

Large Front Reception Room

Quiet Cul De Sac

No Onward Chain

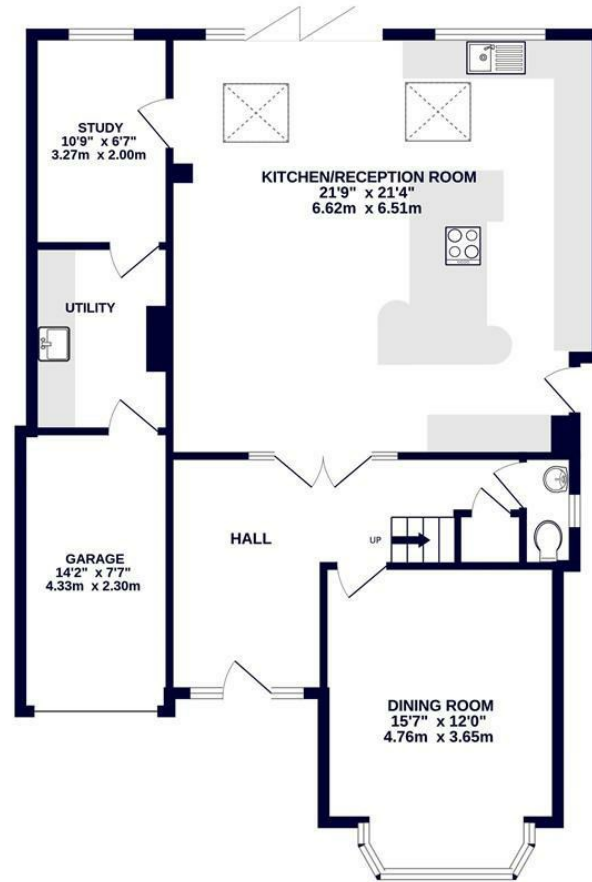
Approx Area:

These particulars are intended as a guide and must not be relied upon as statements of fact. Your attention is drawn to the Important Notice on the last page.

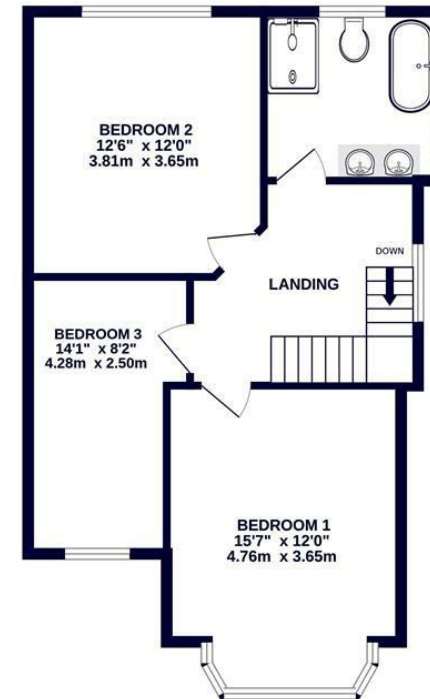




GROUND FLOOR
1113 sq.ft. (103.4 sq.m.) approx.



1ST FLOOR
678 sq.ft. (63.0 sq.m.) approx.



coopers
est 1986

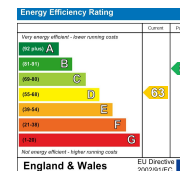
TOTAL FLOOR AREA : 1791 sq.ft. (166.4 sq.m.) approx.

Whilst every attempt has been made to ensure the accuracy of the floorplan contained here, measurements of doors, windows, rooms and any other items are approximate and no responsibility is taken for any error, omission or mis-statement. This plan is for illustrative purposes only and should be used as such by any prospective purchaser. The services, systems and appliances shown have not been tested and no guarantee as to their operability or efficiency can be given.
Made with Metropix 5/2025

coopers
est 1986

**18 Bridge Street, Pinner,
Middlesex, HA5 3JF**
pinner@coopersresidential.co.uk

CoopersResidential.co.uk



Important Notice: These particulars, whilst believed to be accurate are set out as a general outline only for guidance and do not constitute any part of an offer or contract. Intending purchasers should not rely on them as statements or representation of fact, but must satisfy themselves by inspection or otherwise has the authority to make or give any representation or warranty in respect of the property.