

# Nursery Road

Pinner • • HA5 2AP  
Asking Price: £325,000



coopers  
est 1986

# Nursery Road

Pinner • • HA5 2AP

\*Garage Included\* Tulip Court is conveniently located in central Pinner. This two bedroom ground floor flat is the perfect home for professionals, first time buyers, families, commuters or investors. This quiet residential cul de sac is within easy reach of local amenities, schools, and public transport links. The property has the added benefit of a garage, long lease and no onward chain.

Ground Floor Flat

Garage

Spacious Living / Dining Area

Two Double Bedrooms

One Bathroom

Private Balcony

Residents Parking

Communal Gardens

Long Lease

Approx Area: 608 sq ft

These particulars are intended as a guide and must not be relied upon as statements of fact. Your attention is drawn to the Important Notice on the last page.





### **Description**

Located in the heart of Pinner, this ground floor flat offers spacious living throughout that is sure to impress. The entrance hallway leads you into the 16ft living/dining room, which features floor-to-ceiling windows that fill the room with natural light and provide access to a private balcony. The contemporary kitchen is situated to the right. The property boasts one family bathroom and two spacious bedrooms, with master bedroom benefitting from fitted wardrobes.

### **Outside**

Externally, there a private balcony, garage, ample residents parking and well-maintained communal gardens.

### **Location**

Tulip Court, Nursery Road is situated in a popular location and only moments to both Pinner and Northwood Hills High Street. These high streets benefit from an array of restaurants, shops, cafés and bars. The Metropolitan Line can be accessed from Pinner and Northwood Hills Station and this line commutes into the heart of Central London within approx 30 minutes and easy access towards Watford and Rickmansworth.

West Lodge Primary School, Harlyn Primary School and Haydon Secondary School are all within the catchment area. This home offers a fantastic opportunity to be both private and convenient.



### Schools:

Harlyn Primary School (0.54 miles)  
Northwood School (0.91 miles)  
Haydon School (1.38 miles)



### Train:

Northwood Hills (0.93 miles)  
Pinner (1.12 miles)  
Eastcote (1.50 miles)



### Car:

M4, A40, M25, M40



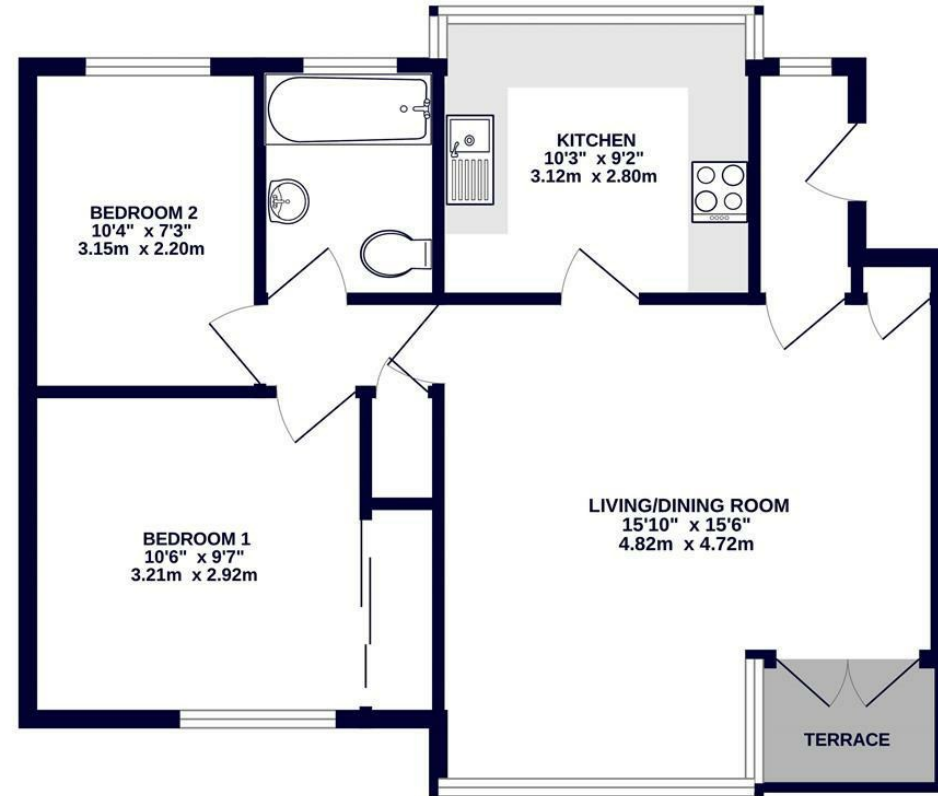
### Council Tax Band:

C

(Distances are straight line measurements from centre of postcode)



## GROUND FLOOR 608 sq.ft. (56.5 sq.m.) approx.



TOTAL FLOOR AREA : 608 sq.ft. (56.5 sq.m.) approx.

Whilst every attempt has been made to ensure the accuracy of the floorplan contained here, measurements of doors, windows, rooms and any other items are approximate and no responsibility is taken for any error, omission or mis-statement. This plan is for illustrative purposes only and should be used as such by any prospective purchaser. The services, systems and appliances shown have not been tested and no guarantee as to their operability or efficiency can be given.  
Made with Metropix ©2024

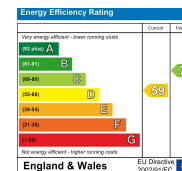
0208 017 6000

18 Bridge Street, Pinner,  
Middlesex, HA5 3JF

pinner@coopersresidential.co.uk

CoopersResidential.co.uk

**coopers**  
est 1986



Important Notice: These particulars, whilst believed to be accurate are set out as a general outline only for guidance and do not constitute any part of an offer or contract. Intending purchasers should not rely on them as statements or representation of fact, but must satisfy themselves by inspection or otherwise has the authority to make or give any representation or warranty in respect of the property.