



FLEXIAGENT

Market Leading, Independent Estate Agents



Carrwood Park

Southport, PR8 5FA

Offers Over £220,000

Flexi-Agent are delighted to present this two bedroom bungalow property to the open market. It is situated in a popular residential area within close proximity to Birkdale village with a wealth of amenities, shops, bars, restaurants as well as excellent local schools and transport links nearby.

The property briefly comprises of; entrance porch, L-shape kitchen area, living room with bay window, shower room, two bedrooms, storage cupboards.

Externally the property offers driveway parking to the front, to the rear offers private spacious sun catching garden.

Viewings available upon request.

Freehold
Council tax band: C
EPC: C

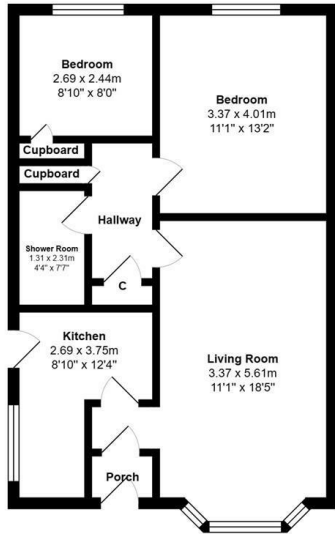
Viewing

Please contact our Flexi Agent Southport Office on 01704 889455 if you wish to arrange a viewing appointment for this property or require further information.

- Two bedroom
- Bungalow
- L-shape kitchen area
- Bay window living room
- Shower room
- Driveway parking
- Rear sun catching garden
- Local transport links
- Close to Birkdale village
- Viewings available upon request



Floor Plan



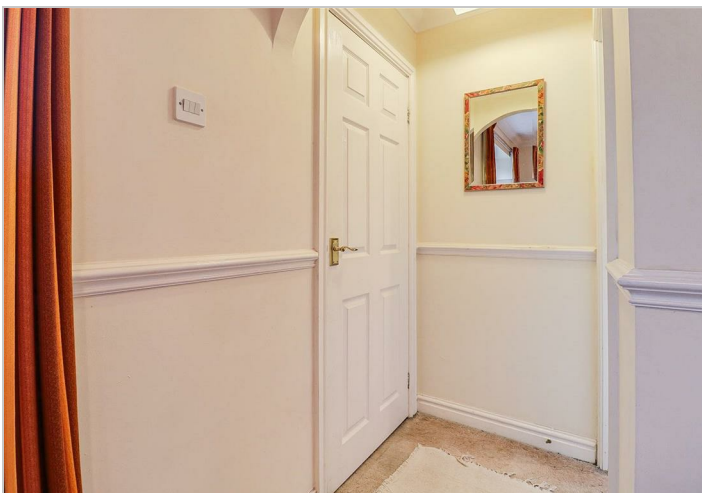
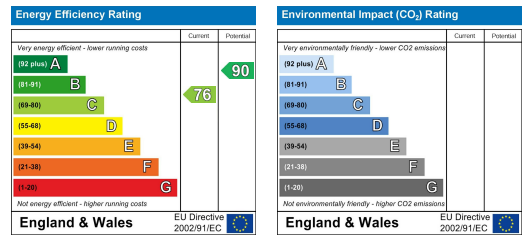
Total Area: 61.8 m² ... 666 ft²

All measurements are approximate and for display purposes only

Area Map



Energy Efficiency Graph



These particulars, whilst believed to be accurate are set out as a general outline only for guidance and do not constitute any part of an offer or contract. Intending purchasers should not rely on them as statements of representation of fact, but must satisfy themselves by inspection or otherwise as to their accuracy. No person in this firm's employment has the authority to make or give any representation or warranty in respect of the property.