



FLEXIAGENT

Market Leading, Independent Estate Agents



Post Office Avenue

Southport, PR9 0UH

Offers Over £120,000

Flexi Agent are delighted to present this two bedrooms first floor apartment with lift access to the open market. Located in the heart of Southport Town Centre offering a plethora of amenities, shops, cafes & bars in town centre & Lord Street, as well as easy access nearby transport links. Available for purchase with NO ONWARDS CHAIN.

The property briefly comprises of, entrance hall, open plan living room diner kitchen with private balcony, two bedrooms with master featuring ensuite, three piece bathroom.

Externally the property offers onsite resident parking & communal gardens.

Viewings available upon request.

NO CHAIN
Leasehold: details TBC
Council tax band C
EPC D

- Two bedrooms
- First floor apartment, circa 606 sqft
- Stairs & lift
- NO CHAIN
- Open plan kitchen / living room / diner
- Three piece bathroom & ensuite
- Resident parking
- Communal garden
- Town centre location
- Viewings available upon request

Viewing

Please contact our Flexi Agent Southport Office on 01704 889455 if you wish to arrange a viewing appointment for this property or require further information.



2



2

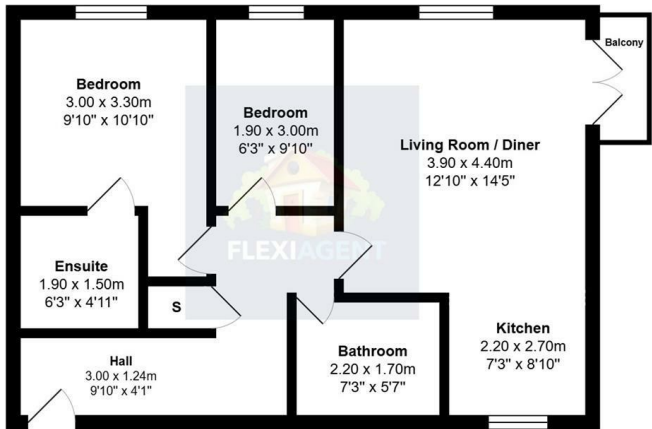


1



D

Floor Plan

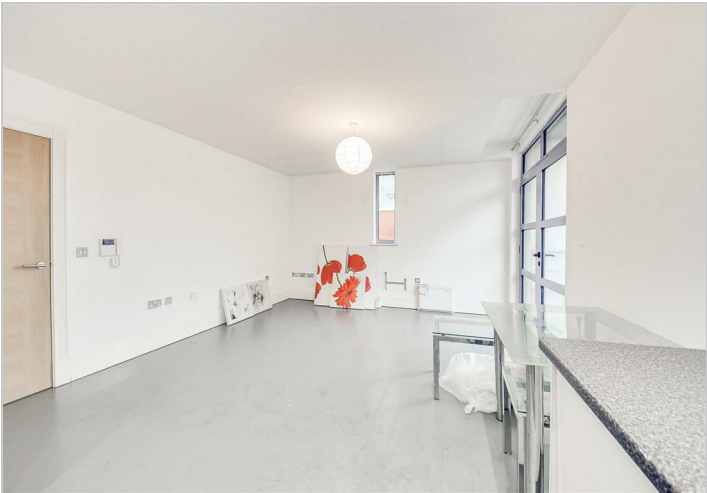
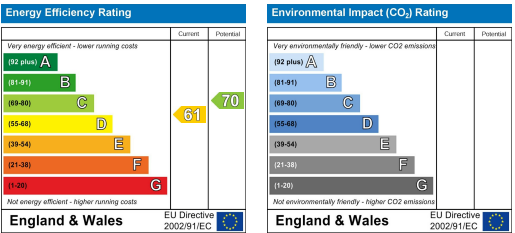


Total Area: 56.3 m² ... 606 ft² (excluding balcony)
All measurements are approximate and for display purposes only

Area Map



Energy Efficiency Graph



These particulars, whilst believed to be accurate are set out as a general outline only for guidance and do not constitute any part of an offer or contract. Intending purchasers should not rely on them as statements of representation of fact, but must satisfy themselves by inspection or otherwise as to their accuracy. No person in this firms employment has the authority to make or give any representation or warranty in respect of the property.