



FLEXIAGENT

Market Leading, Independent Estate Agents



Drummersdale Lane

Ormskirk, L40 9RB

Offers In The Region Of £260,000

Flexi-Agent is proud to present this charming four-bedroom semi-detached property to the open market. Enjoying a desirable location with stunning rural views, the property offers excellent transport links to both Ormskirk and Southport Town Centre—making it an ideal purchase for a variety of buyers, including commuting professionals. It's also conveniently located close to the award-winning Scarisbrick Hall School, perfect for those seeking outstanding education nearby. The property would benefit from some modernisation but offers excellent potential throughout.

The ground floor comprises an entrance hallway, a front-facing lounge that opens into the rear dining room featuring a characterful log burner. The nicely presented kitchen is complemented by a practical utility room with access to the rear garden.

Upstairs, the property boasts four generously sized bedrooms—one of which benefits from dual-aspect windows, allowing natural light to flood the space. A three-piece family bathroom completes this floor.

Externally, the property benefits from ample driveway parking and a low-maintenance front garden. To the rear, there is a detached garage, a solarium, and a well-maintained, sun-catching garden that enjoys lovely countryside views. At the far end of the garden, a warm and inviting sunroom provides an additional space to relax while taking in the delightful views over the adjacent fields.

Viewings available upon request.

- Four bedrooms
- Semi Detached
- Circa 1383 sqft
- Open plan lounge/dining room
- Kitchen with a utility room
- Three piece bathroom
- Detached garage and a solarium
- Well maintained rear garden
- Ample driveway parking
- Viewings available upon request

Viewing

Please contact our Flexi Agent Southport Office on 01704 889455 if you wish to arrange a viewing appointment for this property or require further information.



4



1



2



C

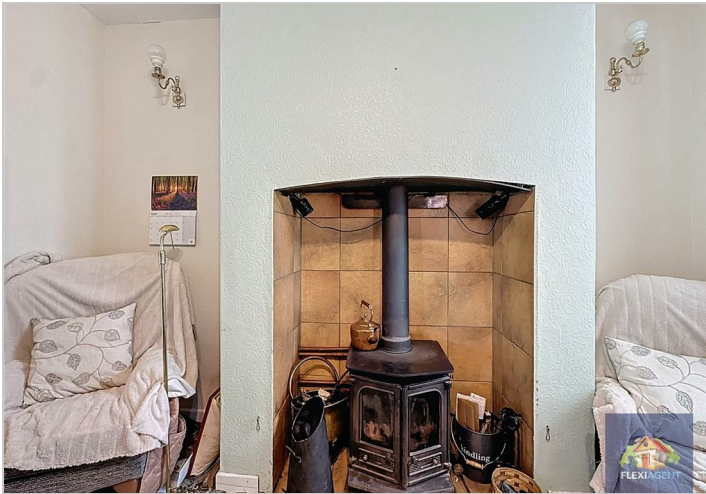
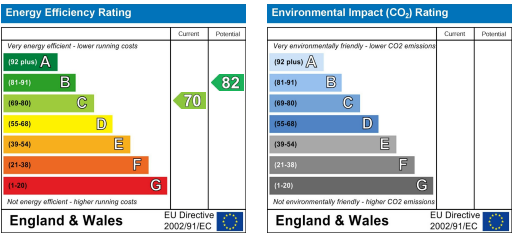
Floor Plan



Area Map



Energy Efficiency Graph



These particulars, whilst believed to be accurate are set out as a general outline only for guidance and do not constitute any part of an offer or contract. Intending purchasers should not rely on them as statements of representation of fact, but must satisfy themselves by inspection or otherwise as to their accuracy. No person in this firms employment has the authority to make or give any representation or warranty in respect of the property.