



FLEXIAGENT

Market Leading, Independent Estate Agents



Part Street Southport, PR8 1HY

Offers In Excess Of £120,000

Flexi-Agent are proud to present this two bedroom apartment to the open sales market. Located close to Southport town centre with Lord street a minutes walk away & Birkdale village close by, it is surrounded by a wealth of local amenities, with bars, restaurants & shops on its door step, & local transport links a short walk away, as well as the beautiful Southport sea front.

The property briefly comprises: Entrance hallway, a spacious living room with a sun catching balcony, kitchen, two well proportioned bedrooms and a bathroom.

Externally the property benefits from off road parking, garage and well kept communal gardens.

Leasehold
Lease Term - 999 years from 1 April 1973
Lease Term Remaining - 947 years
Share of the Freehold

EPC C
Council Tax Band B
Viewings available on request.

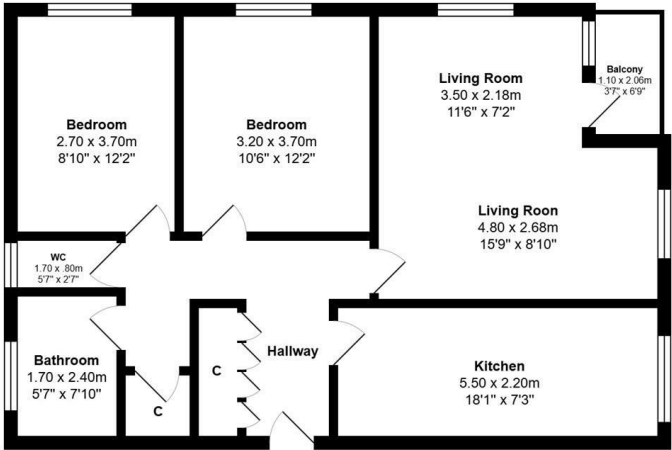
- Two double bedrooms
- Apartment
- Circa 825 sqft
- Share of freehold
- Spacious lounge with a balcony
- Modern white finish kitchen
- Three piece bathroom
- Off road parking with a garage
- Communal gardens
- Viewings available upon request

Viewing

Please contact our Flexi Agent Southport Office on 01704 889455 if you wish to arrange a viewing appointment for this property or require further information.



Floor Plan

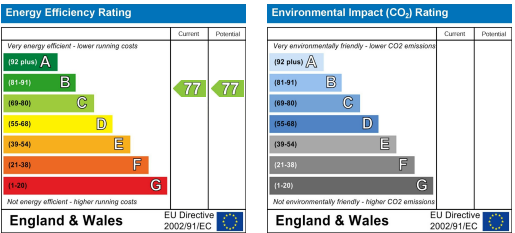


Total Area: 76.6 m² ... 825 ft² (excluding balcony)
All measurements are approximate and for display purposes only

Area Map



Energy Efficiency Graph



These particulars, whilst believed to be accurate are set out as a general outline only for guidance and do not constitute any part of an offer or contract. Intending purchasers should not rely on them as statements of representation of fact, but must satisfy themselves by inspection or otherwise as to their accuracy. No person in this firms employment has the authority to make or give any representation or warranty in respect of the property.