



FLEXIAGENT

Market Leading, Independent Estate Agents



Lancaster Road

Southport, PR8 2LQ

Offers In Excess Of £750,000

Flexi Agent are thrilled to present this substantial three/four bedroom maisonette to the open sales market. This truly unique home is a rare opportunity and is located in one of Southport's most prestigious areas—Birkdale. Just a short walk away is the vibrant Birkdale Village, offering a variety of shops, restaurants, bars, and excellent transport links.

Set within fantastic, private walled grounds, the property also benefits from a separate annexe—perfect for use as a home office, gym, or independent living accommodation for a family member. Designed by a local architect in 2000 and built by the current owner, the home offers generous proportions throughout and would make an ideal family residence.

Inside, the property boasts a large kitchen with high ceilings and modern appliances, a spacious reception room with double doors opening onto the side courtyard, and an impressive sun room—currently used as a bar—that flows seamlessly into the garden, creating the perfect indoor-outdoor entertaining space. All three expansive double bedrooms benefit from individual en suite bathrooms, providing privacy and comfort for residents and guests alike.

Externally, the property features a generous driveway with space for multiple vehicles. A full-length veranda runs along the side of the home, adorned with water features and beautifully landscaped palm gardens, all enhanced by extensive outdoor lighting—making the space enjoyable year-round. Multiple access points from the veranda lead directly into the bedrooms and main living areas.

The annexe offers further flexibility and could serve as a fourth bedroom, complete with its own bathroom and storage.

- Substantial three/four bedroom, Maisonette
- Spanning over circa 1800 sqft
- Rare opportunity to own a unique property
- Generous living throughout
- Sought after Birkdale location
- Annexe with its own bathroom
- Full length veranda across the side
- Beautifully landscaped gardens
- Ample parking for several vehicles
- Early inspection is strongly advised

Viewing

Please contact our Flexi Agent Southport Office on 01704 889455 if you wish to arrange a viewing appointment for this property or require further information.



4



4



2



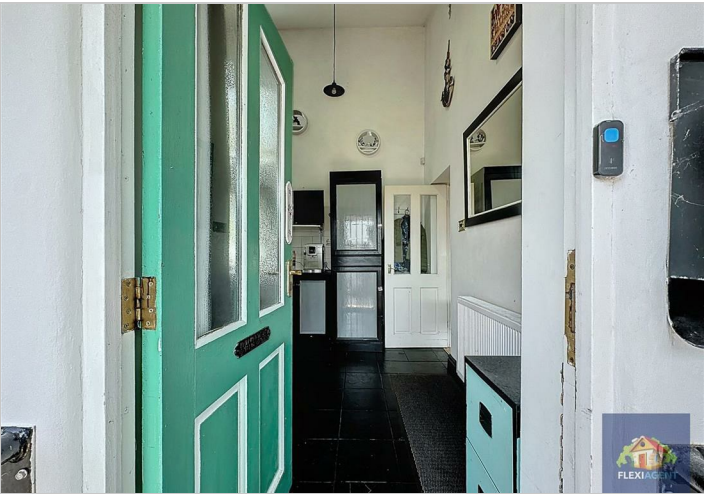
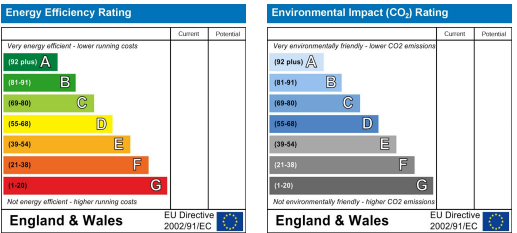
Floor Plan



Area Map



Energy Efficiency Graph



These particulars, whilst believed to be accurate are set out as a general outline only for guidance and do not constitute any part of an offer or contract. Intending purchasers should not rely on them as statements of representation of fact, but must satisfy themselves by inspection or otherwise as to their accuracy. No person in this firms employment has the authority to make or give any representation or warranty in respect of the property.