



# FLEXIAGENT

Market Leading, Independent Estate Agents



## 51 Scarisbrick New Road

Southport, PR8 6PQ

**Offers In Excess Of £240,000**

Flexi-Agent is thrilled to present this beautifully presented two-bedroom first floor apartment to the open sales market. Offering a luxurious lifestyle in a fantastic location, this stylish home is ideally situated between Kew Retail Park, Southport Town Centre, and Birkdale Village. The property is perfectly positioned within easy reach of a wide variety of bars, restaurants, shops, and amenities, as well as Southport and Formby Hospital.

Upon entering, you are greeted by a welcoming entrance hallway featuring high-quality LVT herringbone flooring, a telephone entry system, and a convenient storage cupboard. The top-of-the-range kitchen boasts underfloor heating, an integrated fridge freezer, induction hob, electric oven, double-glazed windows, and space for a washing machine.

The bright and airy lounge is beautifully finished with two striking feature bay windows, LVT herringbone flooring, double-glazed windows, an electric heater, and elegant wood panelling-Ideal for luxury living.

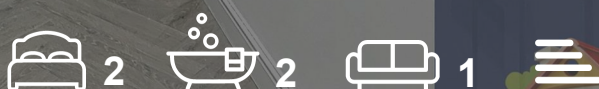
There are two spacious double bedrooms, each with double-glazed windows and electric heaters. One of the bedrooms is enhanced by wood panelling and benefits from a sleek, modern en suite shower room with stylish black fittings, tiled walls and flooring, and a heated towel rail.

A contemporary three-piece bathroom, also fitted with underfloor heating and black fittings, completes this stunning apartment.

- Two bedroom, First Floor Apartment, circa 1102 sqft
- OPEN DAY 28TH JUNE 2025
- HIGH SPEC THROUGHOUT
- Underfloor heating in bathrooms and kitchen
- Two striking bay windows in the lounge
- Integrated kitchen appliances and space for a washing machine
- Sleek three piece bathroom and en suite shower room
- Beautiful communal gardens
- One allocated parking space
- Viewings available upon request

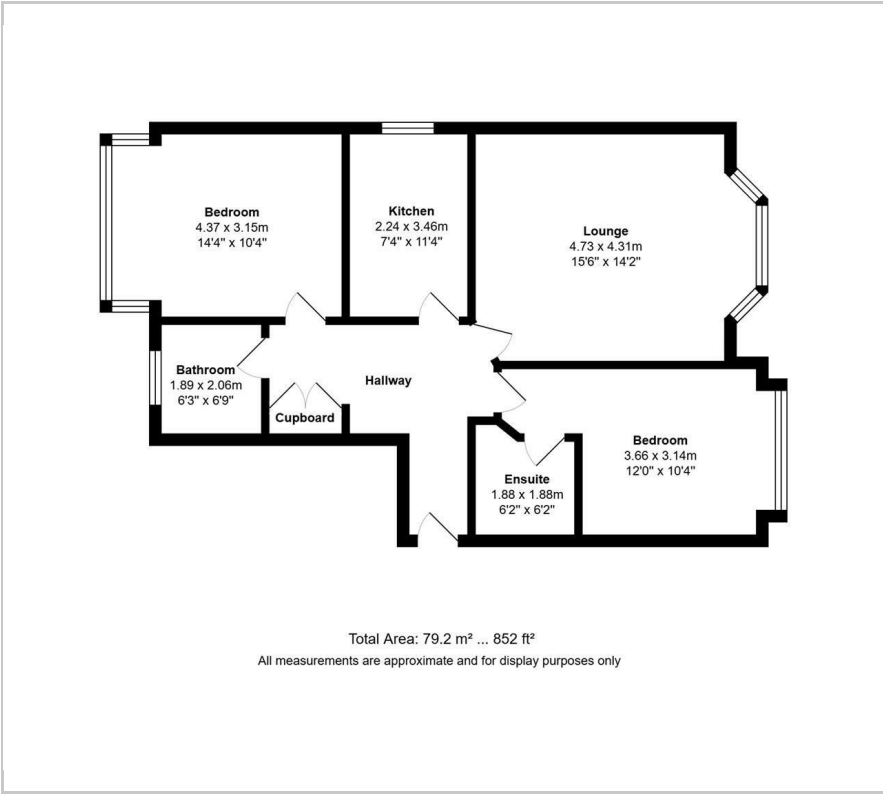
### Viewing

Please contact our Flexi Agent Southport Office on 01704 889455 if you wish to arrange a viewing appointment for this property or require further information.





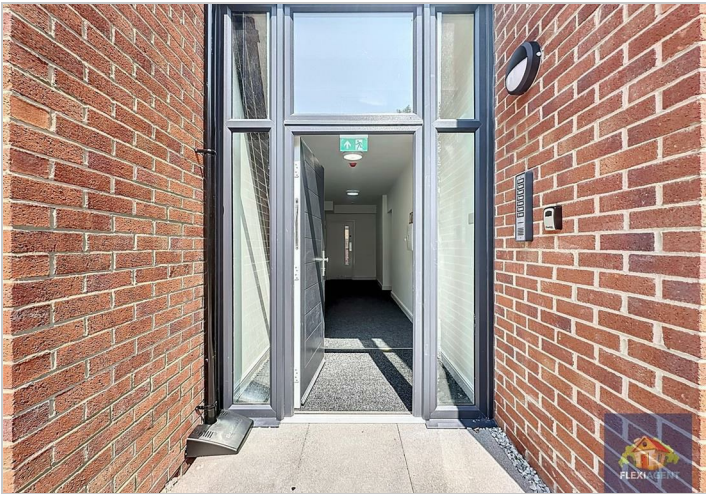
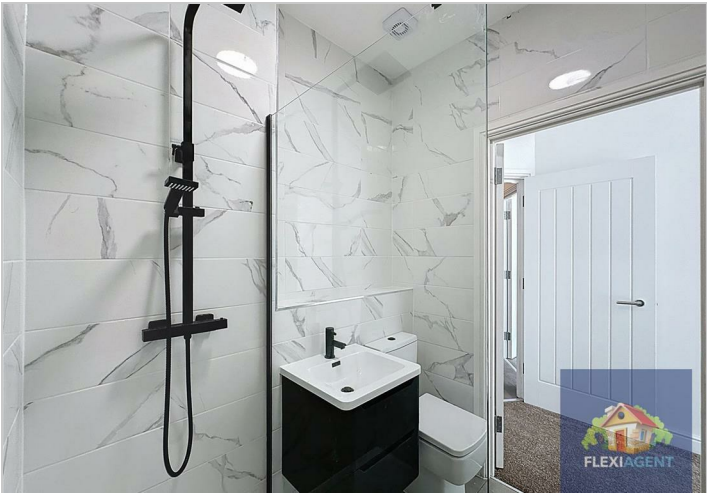
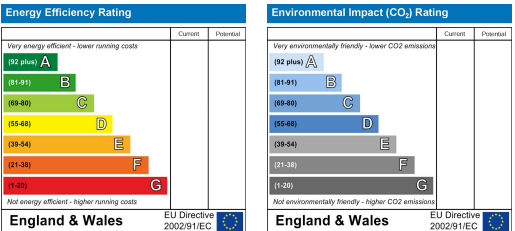
Floor Plan



Area Map



Energy Efficiency Graph



These particulars, whilst believed to be accurate are set out as a general outline only for guidance and do not constitute any part of an offer or contract. Intending purchasers should not rely on them as statements of representation of fact, but must satisfy themselves by inspection or otherwise as to their accuracy. No person in this firms employment has the authority to make or give any representation or warranty in respect of the property.