



## Milton Street

Southport, PR9 7AL

**£950 (From) Per Month**

Flexi-Agent are delighted to present this two bedroom semi-detached property to the rental market. Located in Southport, it is surrounded by a wealth of local amenities, excellent schools, is a short walk from local transport links.

It is a short walk away from the High Park Center with its array of shops. The property is also close to the Multiple amenities in Churchtown.

The property briefly comprises: Entrance, spacious living room with through dining room and a fitted kitchen, a utility with a door leading to the rear garden.

To the first floor two well proportioned double bedrooms.

Externally the property benefits from ample driveway parking and a sun catching rear garden.

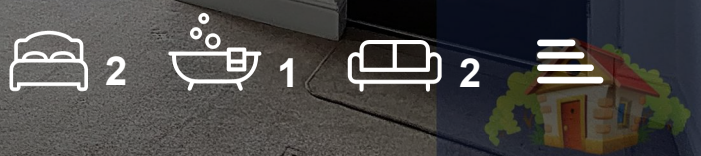
Early inspection of this property is strongly recommended to fully appreciate the accommodation on offer.

Viewing is available immediately by appointment.

### Viewing

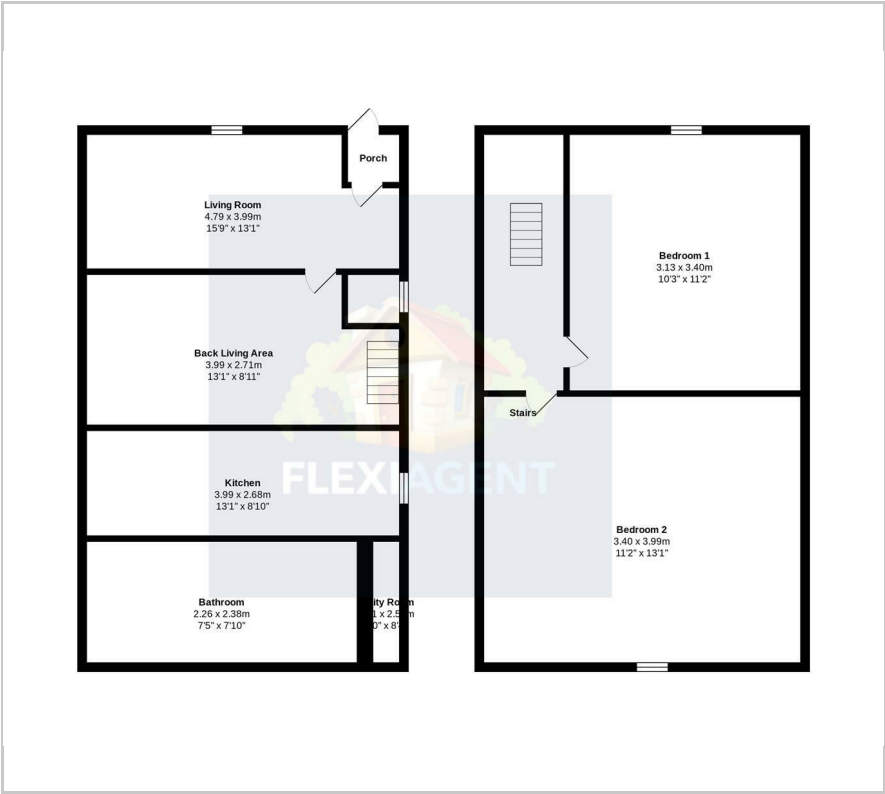
Please contact our Flexi-Agent Southport Lettings Office on 01704 889455 if you wish to arrange a viewing appointment for this property or require further information.

- Close to Schools
- Close to Local Travel Links
- Two double bedrooms
- Spacious rear garden
- Fitted Kitchen
- Utility Room
- New Bathroom with walk in shower
- Off Road Parking





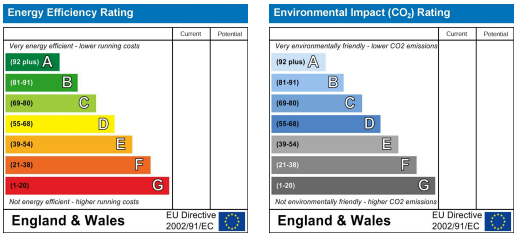
Floor Plan



Area Map



Energy Efficiency Graph



These particulars, whilst believed to be accurate are set out as a general outline only for guidance and do not constitute any part of an offer or contract. Intending purchasers should not rely on them as statements of representation of fact, but must satisfy themselves by inspection or otherwise as to their accuracy. No person in this firms employment has the authority to make or give any representation or warranty in respect of the property.