



FLEXIAGENT

Market Leading, Independent Estate Agents



Westminster Drive

Southport, PR8 2TH

Offers In Excess Of £500,000

Flexi Agent is proud to present this fantastic four-bedroom detached family home to the open market. Ideally located near Ainsdale, the property offers easy access to a range of local amenities including shops, cafés, bars, and excellent transport links. It's also within walking distance of Ainsdale Beach, sand dunes, pine woods, and well-regarded local schools.

The ground floor offers a welcoming entrance hallway with understairs storage, leading into a spacious open-plan lounge and dining area. The lounge features a charming fireplace, while the dining area includes a convenient WC and sliding doors that open into a bright, airy sunroom—perfect for year-round use and providing direct access to the rear garden. The modern kitchen diner is well-appointed with up-to-date appliances, ample storage, and generous space for both cooking and family dining, along with access to the rear garden and the integrated garage.

Upstairs, the first floor comprises a bright landing, four well-proportioned bedrooms, a storage cupboard, and a well-maintained four-piece family bathroom.

Externally, the home offers a landscaped front garden with a spacious driveway accommodating multiple vehicles and leading to the garage. The rear garden is generously sized, private, and enjoys sunlight throughout the day—ideal for entertaining and relaxing. A cosy side garden to the rear, accessible via the kitchen, offers a perfect space for indoor-outdoor dining/relaxing.

- Four bedroom, Detached, circa 2055 sqft
- Immaculate throughout
- Generous open plan lounge/diner
- Sun room to the rear with access to the garden
- Well portioned modern kitchen/diner with plenty of storage
- Downstairs WC and a well maintained four piece family bathroom
- Beautifully landscaped front and rear garden
- Integrated garage with direct access from the driveway and kitchen
- Spacious driveway parking for several vehicles
- Viewings available upon request

Viewing

Please contact our Flexi Agent Southport Office on 01704 889455 if you wish to arrange a viewing appointment for this property or require further information.



4



1



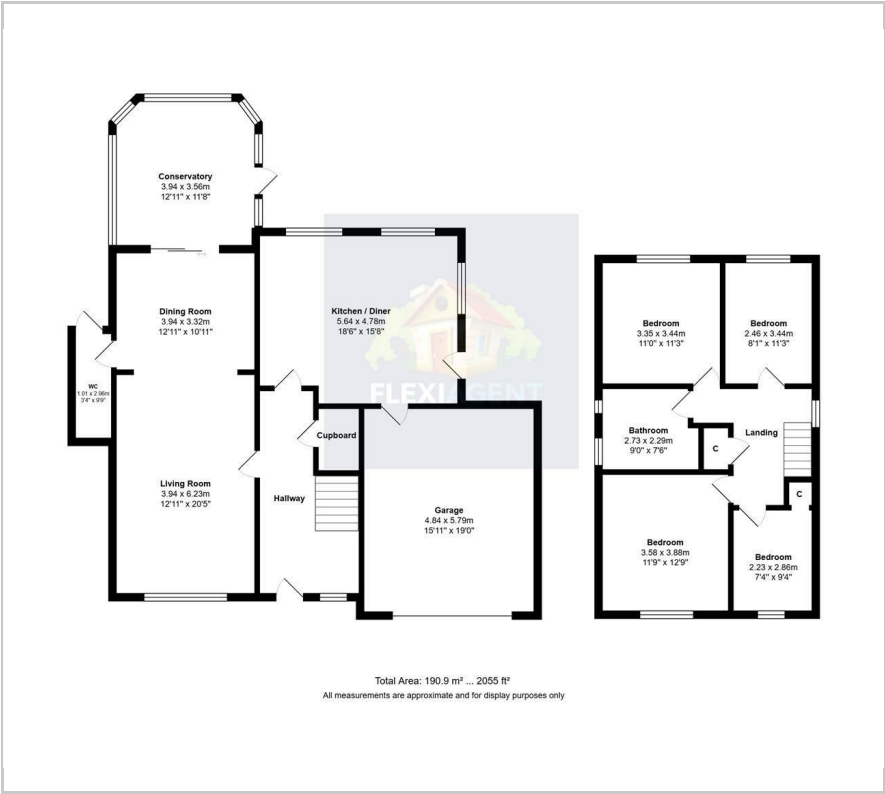
3



C



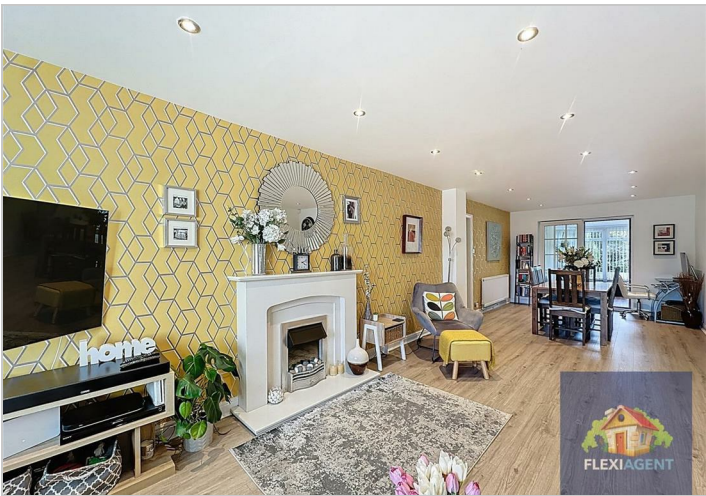
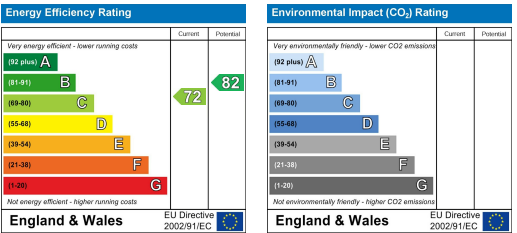
Floor Plan



Area Map



Energy Efficiency Graph



These particulars, whilst believed to be accurate are set out as a general outline only for guidance and do not constitute any part of an offer or contract. Intending purchasers should not rely on them as statements of representation of fact, but must satisfy themselves by inspection or otherwise as to their accuracy. No person in this firms employment has the authority to make or give any representation or warranty in respect of the property.