



Cambridge Road

Southport, PR9 9NG

£750 Per Month

Flexi-Agent are delighted to present this one bedroom, ground floor apartment to let. Located in a sought after residential area, it is a stone's throw from the beautiful Hesketh Park, nearby to Churchtown village with easy access in and out of Southport Town Centre via the A565 and is surrounded by a wealth of local amenities including many shops, restaurants and bars.

The property briefly comprises: Communal entrance hallway into spacious open plan kitchen/living area featuring a bay window and door allowing access to the communal gardens, a double bedroom featuring a beautiful bay window, and a shower room.

The property also benefits from basement storage, ample driveway parking and breath-taking beautiful communal gardens.

Council tax band - A

Viewings available upon request.

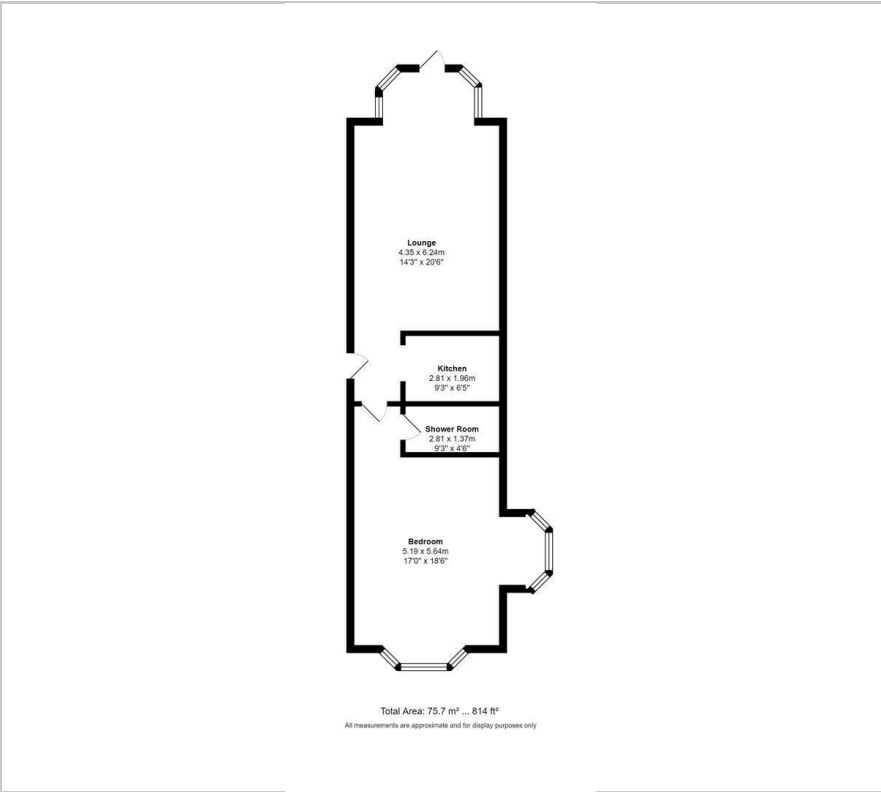
- One bedroom ground floor apartment
- Open plan kitchen/living area
- Bright modern shower room
- Spacious bedroom with fantastic bay window
- Ample driveway parking
- Beautiful communal gardens
- Close to amenities
- A stone's throw from Hesketh Park
- Viewings available upon request

Viewing

Please contact our Flexi-Agent Southport Lettings Office on 01704 889455 if you wish to arrange a viewing appointment for this property or require further information.



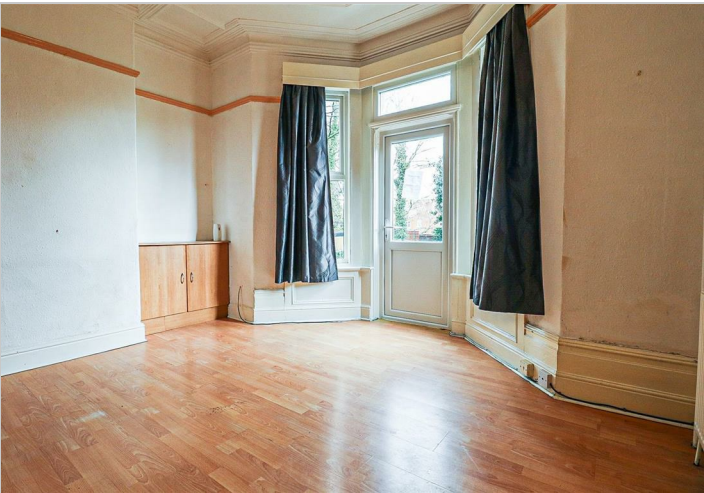
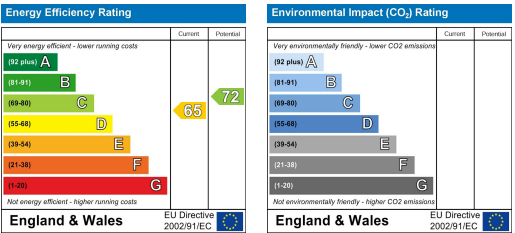
Floor Plan



Area Map



Energy Efficiency Graph



These particulars, whilst believed to be accurate are set out as a general outline only for guidance and do not constitute any part of an offer or contract. Intending purchasers should not rely on them as statements of representation of fact, but must satisfy themselves by inspection or otherwise as to their accuracy. No person in this firms employment has the authority to make or give any representation or warranty in respect of the property.