

## Devonshire Road

Southport, PR9 7BX

**£750 Per Month**

Flexi-Agent are thrilled to present this beautifully appointed two bedroom first Floor Duplex apartment, perfectly situated in the heart of High Park. The location offers an enviable array of amenities, including a variety of local shops, eateries, , as well as excellent transport links that provide easy access to Southport town centre and beyond.

The property briefly comprises: Entrance hallway , bathroom and spacious living room/kitchen, two well-proportioned single bedrooms and bathroom.

The building has its own entrance and parking is available.

Deposit £865.38

Viewing is available immediately by appointment.

- Front Entrance
- Two bedrooms
- Off road parking
- Living/Kitchen Area
- Close to Local Village shops and Transport
- Available now
- Nicely Presented
- Two Bed Duplex

### Viewing

Please contact our Flexi-Agent Southport Lettings Office on 01704 889455 if you wish to arrange a viewing appointment for this property or require further information.





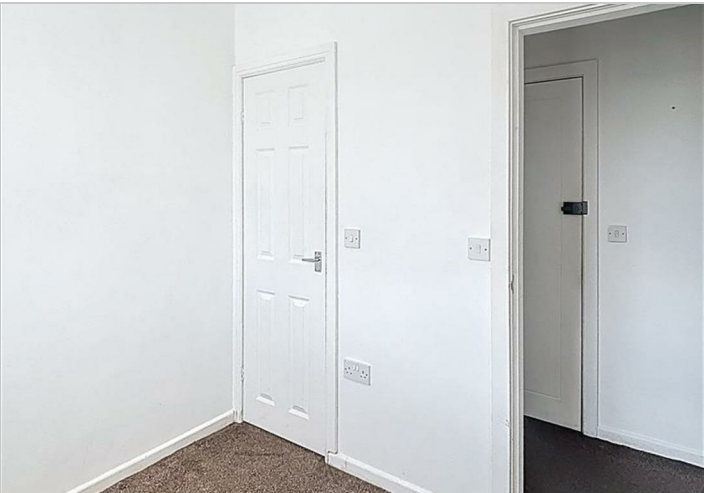
Floor Plan



Area Map



Energy Efficiency Graph



These particulars, whilst believed to be accurate are set out as a general outline only for guidance and do not constitute any part of an offer or contract. Intending purchasers should not rely on them as statements of representation of fact, but must satisfy themselves by inspection or otherwise as to their accuracy. No person in this firms employment has the authority to make or give any representation or warranty in respect of the property.